

**THE IWI AND HAPŪ OF TE ROHE O TE WAIROA**  
**and**  
**TRUSTEES OF THE TĀTAU TĀTAU O TE WAIROA TRUST**  
**and**  
**THE CROWN**

---

**DEED OF SETTLEMENT SCHEDULE:**  
**ATTACHMENTS**

---



ATTACHMENTS

---

TABLE OF CONTENTS

1	AREA OF INTEREST .....	1
2	DEED PLANS .....	2
3	RFR LAND .....	31
4	DRAFT SETTLEMENT BILL .....	49



1 AREA OF INTEREST



1

## ATTACHMENTS

---

### 2 DEED PLANS

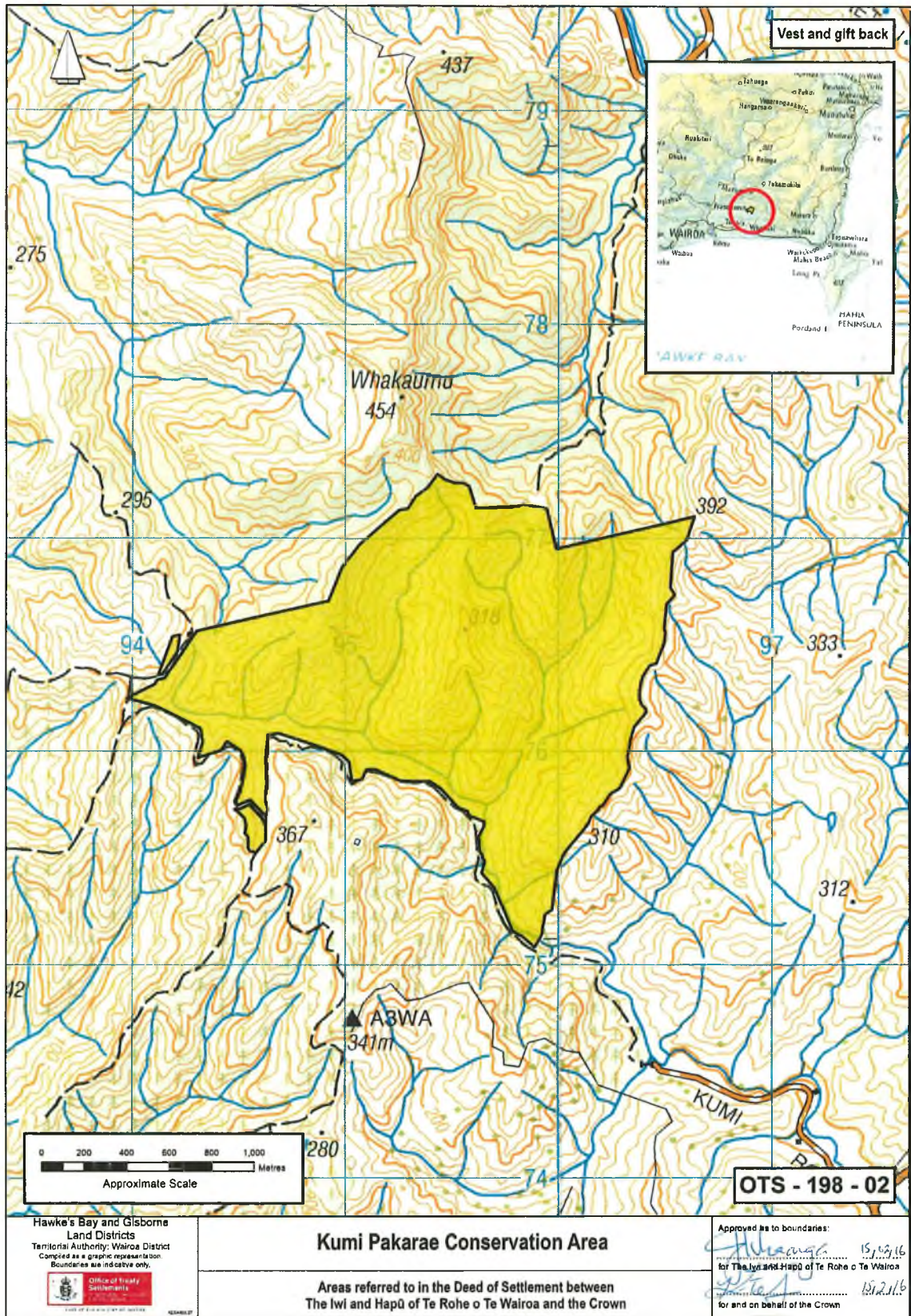
Kumi Pakarae Conservation Area (OTS-198-02)  
Mahia Peninsula Scenic Reserve (OTS-198-03)  
Te Reinga Scenic Reserve Property A (OTS-198-04)  
Mahia Peninsula Scenic Reserve (OTS-198-05)  
Te Reinga Scenic Reserve Property A (OTS-198-06)  
Wharerata Hill Scenic Reserve (OTS-198-07)  
Hangaroa River and its tributaries (OTS-198-08)  
Kumi Pakarae Conservation Area (OTS-198-09)  
Mahia Peninsula Local Purpose (Esplanade) Reserve (OTS-198-10)  
Mangaone Caves Historic Reserve (OTS-198-11)  
Mangapoike River and its tributaries (OTS-198-12)  
Maungawhio Lagoon (OTS-198-13)  
Nuhaka River and its tributaries (OTS-198-14)  
Otoki Government Purpose (Wildlife Management) Reserve (OTS-198-15)  
Panekirikiri Conservation Area (OTS-198-16)  
Portland Island Marginal Strip (OTS-198-17)  
Ruakituri River and its tributaries (OTS-198-18)  
Te Reinga Scenic Reserve property B (OTS-198-19)  
Waiatai Scenic Reserve (OTS-198-20)  
Waiiau River and its tributaries within the area of interest (OTS-198-21)  
Waikaretaheke River and its tributaries (OTS-198-22)  
Wairoa River and its tributaries (OTS-198-23)  
Whangawehi Stream and its tributaries (OTS-198-24)  
Morere Recreation Reserve (OTS-198-25)  
Morere Springs Scenic Reserve (OTS-198-26)  
Morere Springs Scenic Reserve (OTS-198-27)  
Un-named marginal strip (Waitaniwha) (OTS-198-28)  
Otoki Government Purpose (Wildlife Management) Reserve (OTS-198-29)



ATTACHMENTS

2: DEED PLANS

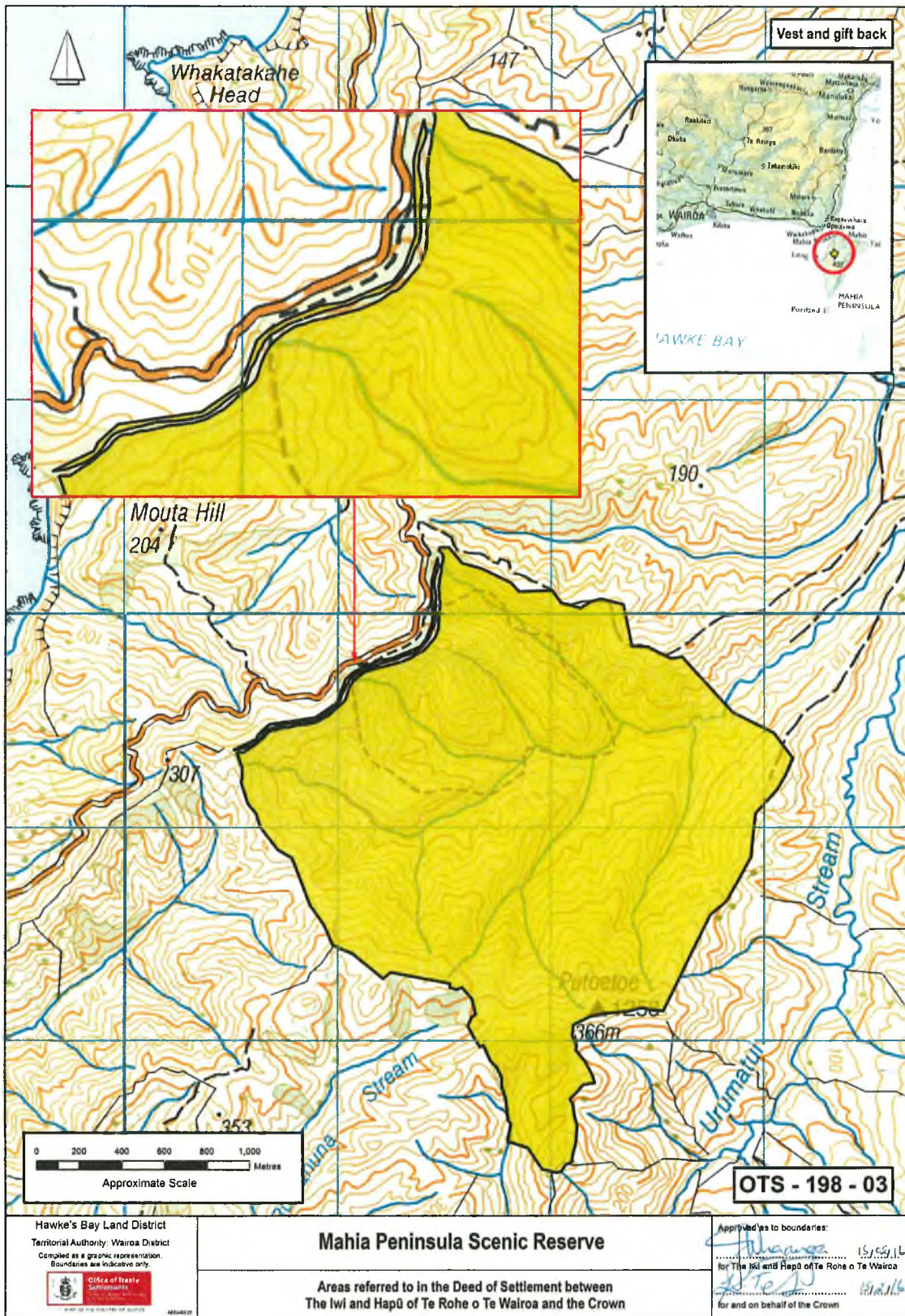
Kumi Pakarae Conservation Area



ATTACHMENTS

2: DEED PLANS

Mahia Peninsula Scenic Reserve



Hawke's Bay Land District  
Territorial Authority: Wairoa District  
Compiled as a graphic representation.  
Boundaries are indicative only.



Mahia Peninsula Scenic Reserve

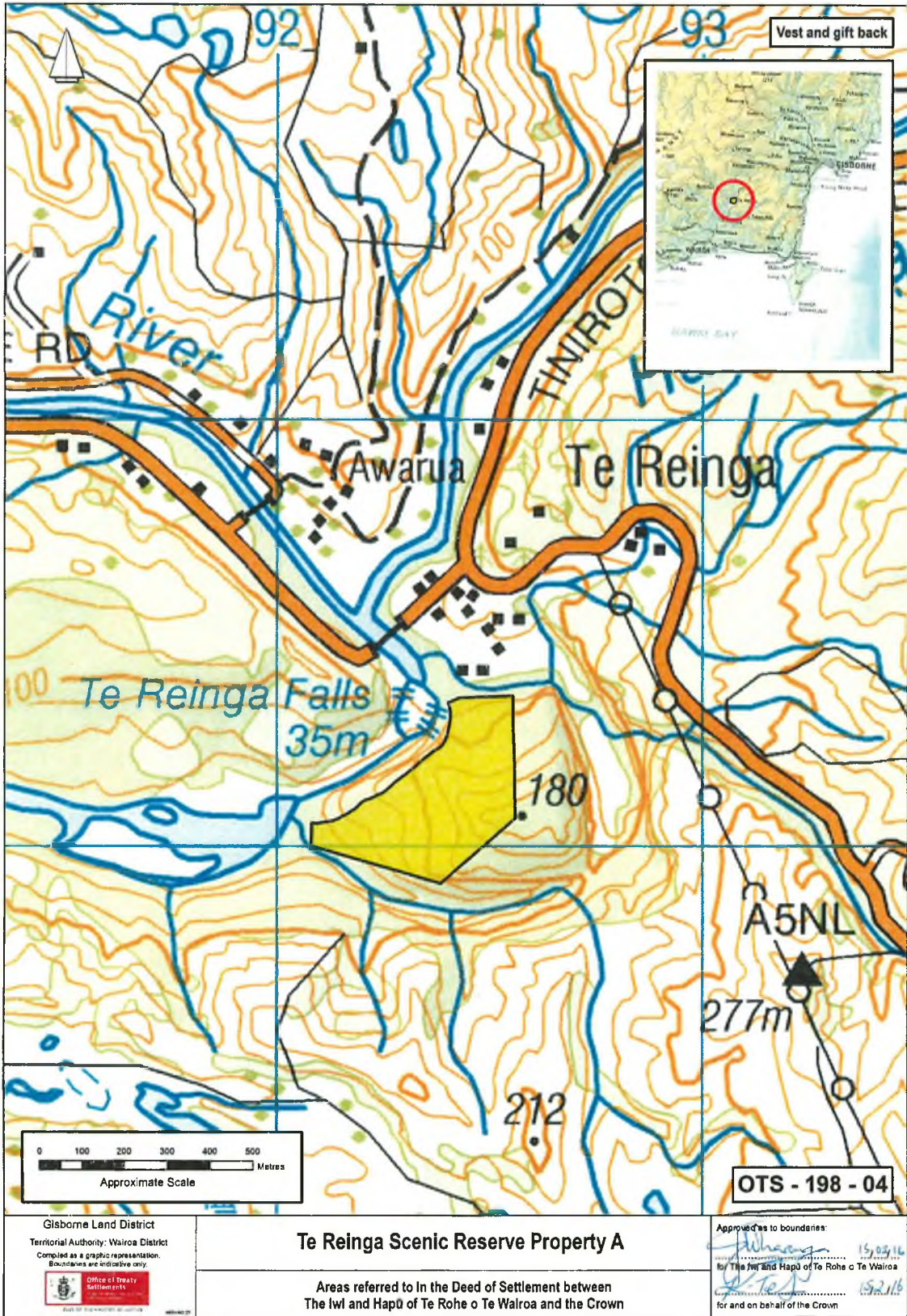
Areas referred to in the Deed of Settlement between  
The Iwi and Hapū of Te Rohe o Te Wairoa and the Crown

Approved as to boundaries:  
for The Iwi and Hapū of Te Rohe o Te Wairoa  
for and on behalf of the Crown

ATTACHMENTS

2: DEED PLANS

Te Reinga Scenic Reserve Property A

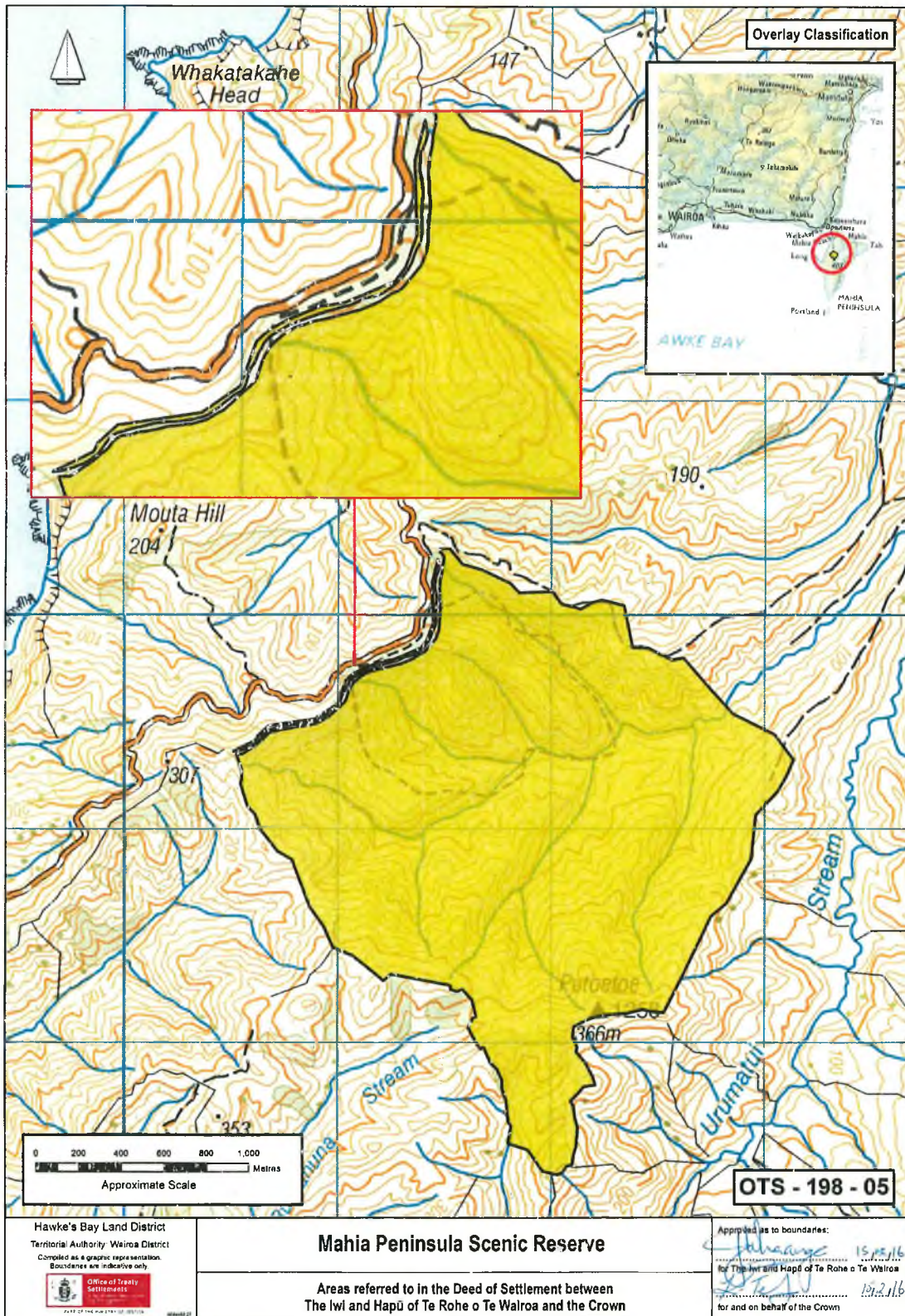


5

ATTACHMENTS

2: DEED PLANS

Mahia Peninsula Scenic Reserve



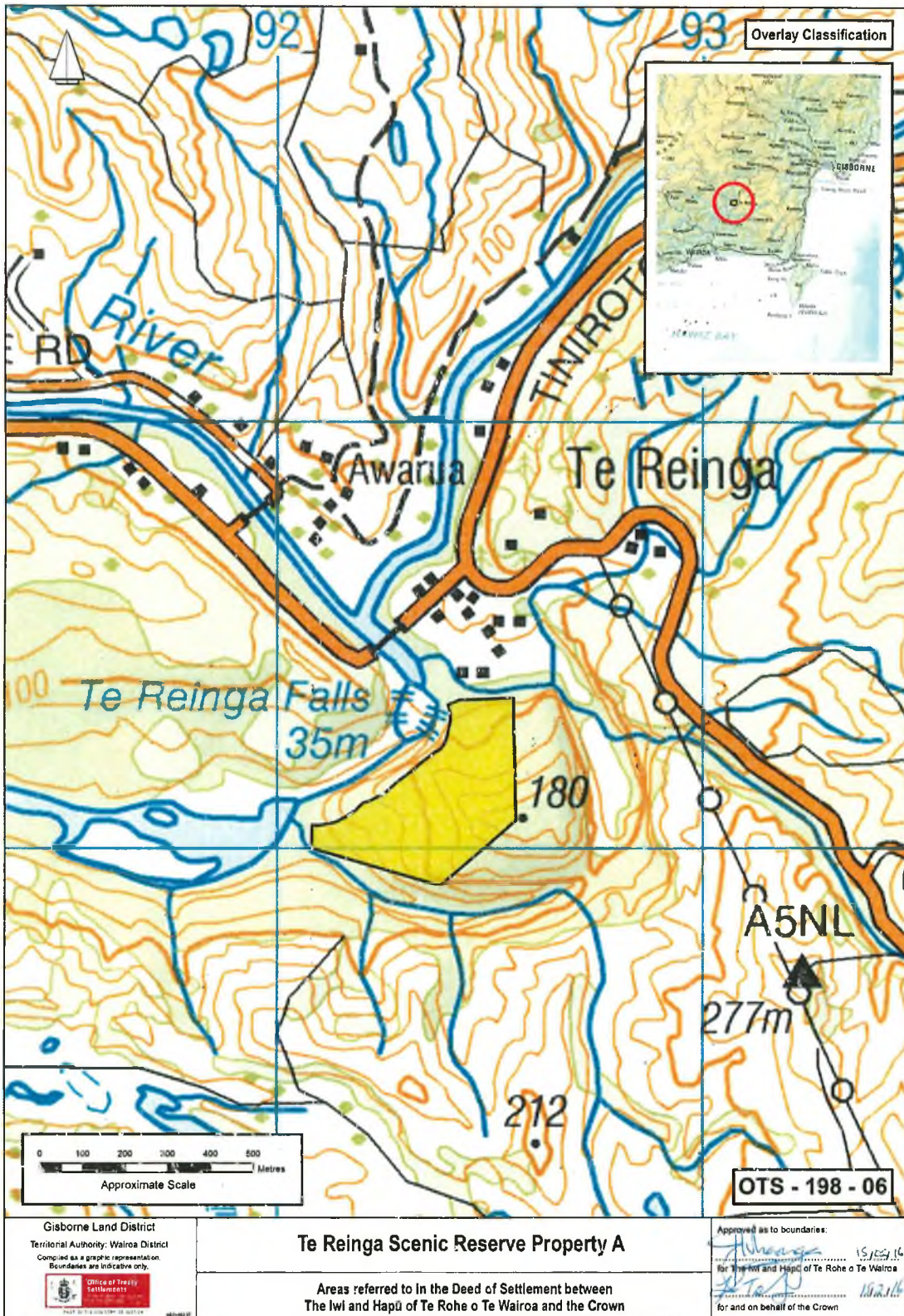
6



ATTACHMENTS

2: DEED PLANS

Te Reinga Scenic Reserve Property A

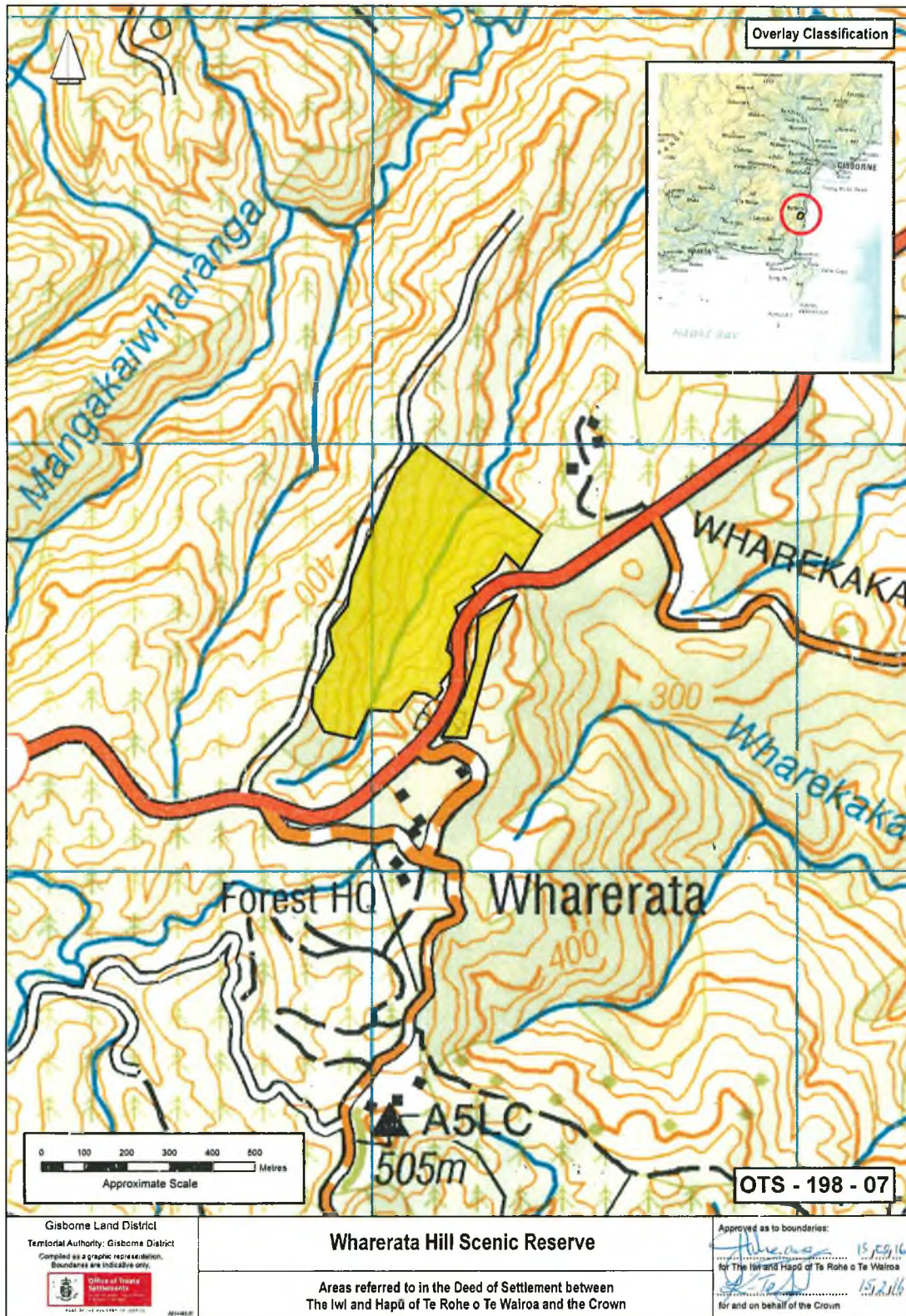


Handwritten signature and the number 7.

ATTACHMENTS

2: DEED PLANS

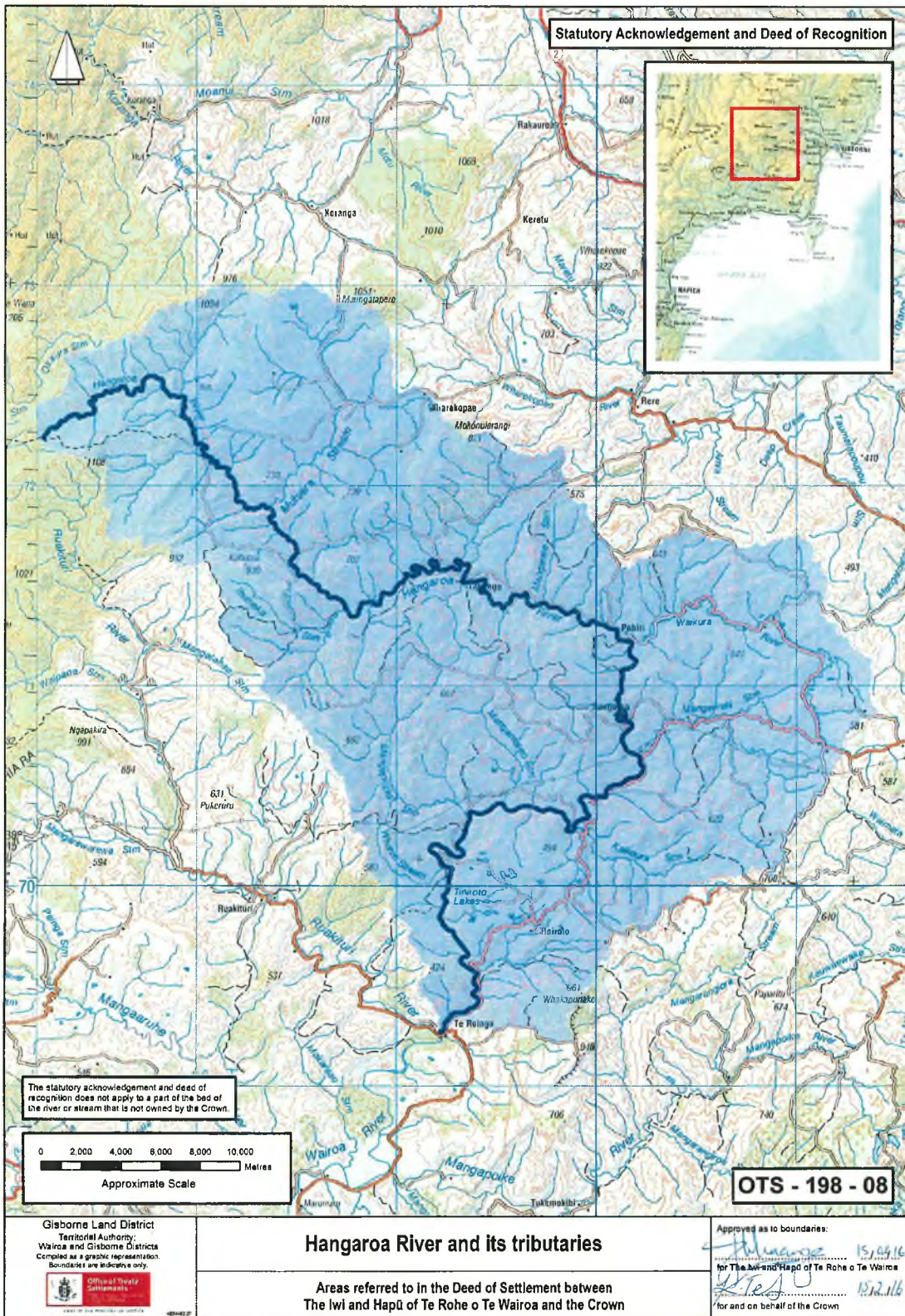
Wharerata Hill Scenic Reserve



ATTACHMENTS

2: DEED PLANS

Hangaroa River and its tributaries

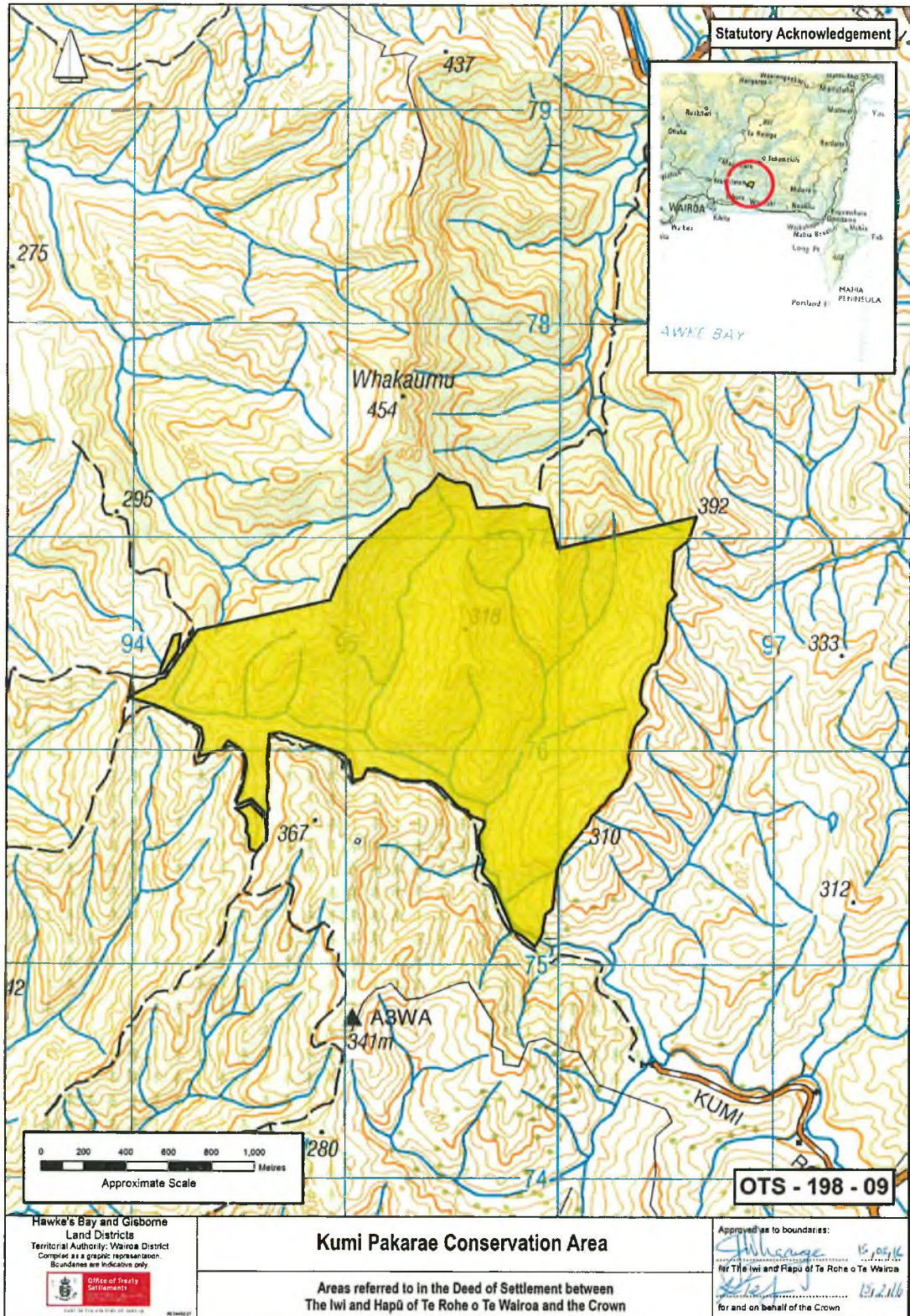


9

ATTACHMENTS

2: DEED PLANS

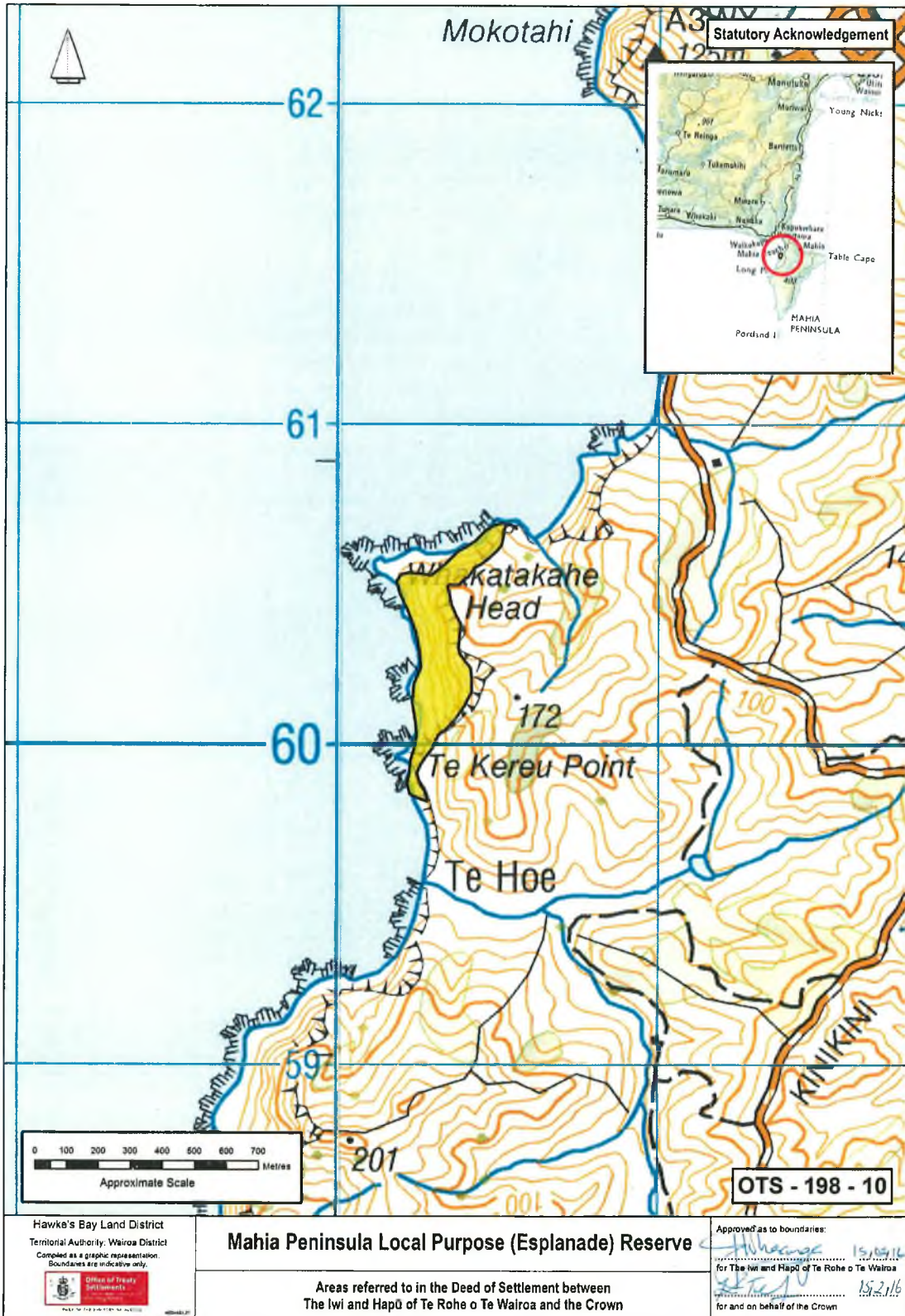
Kumi Pakarae Conservation Area



ATTACHMENTS

2: DEED PLANS

Mahia Peninsula Local Purpose (Esplanade) Reserve



ATTACHMENTS

2: DEED PLANS

Mangaone Caves Historic Reserve

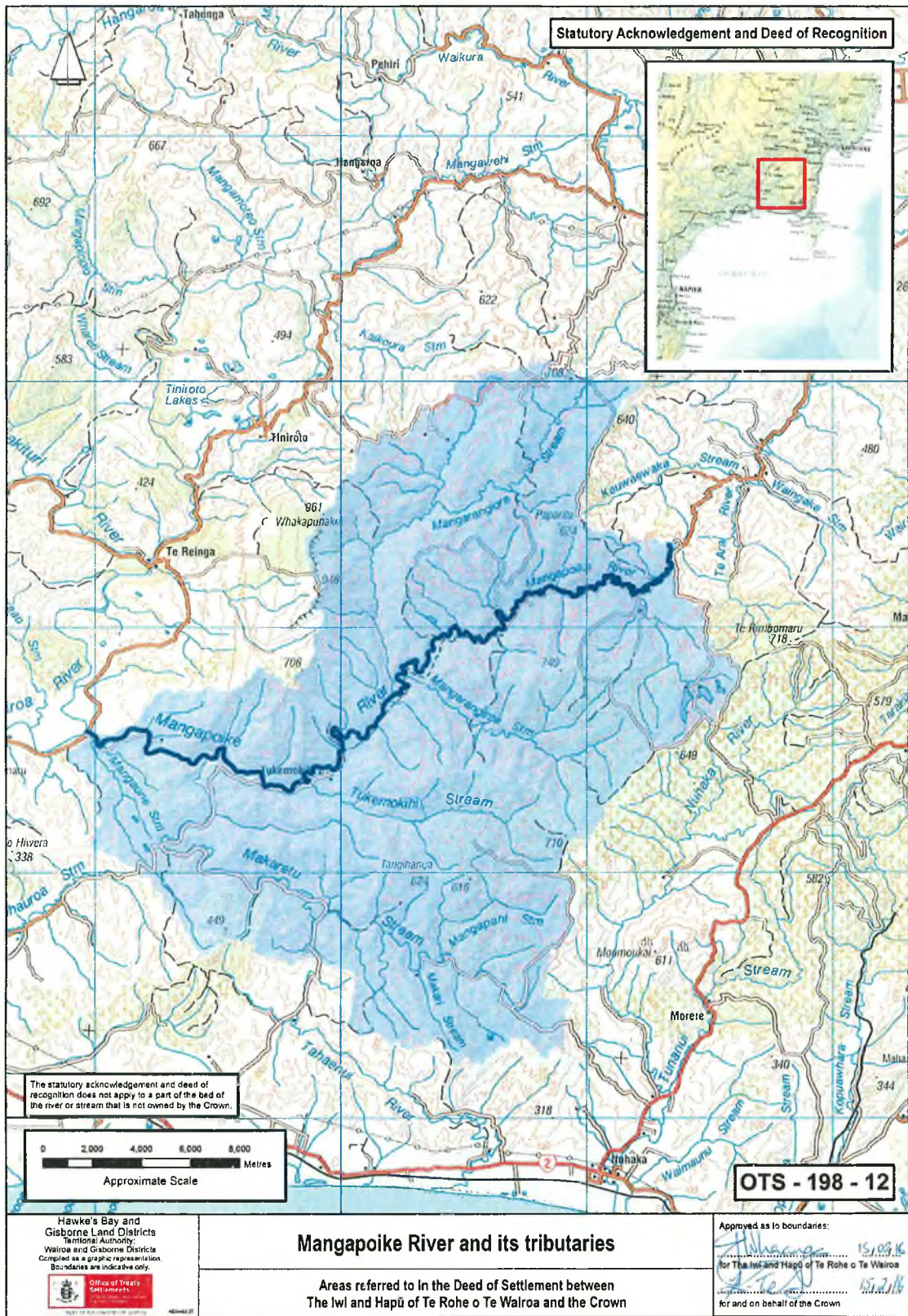


12

ATTACHMENTS

2: DEED PLANS

Mangapoike River and its tributaries



Mangapoike River and its tributaries

Areas referred to in the Deed of Settlement between  
The Iwi and Hapu of Te Rohe o Te Wairoa and the Crown

Approved as to boundaries:  
for The Iwi and Hapu of Te Rohe o Te Wairoa  
for and on behalf of the Crown

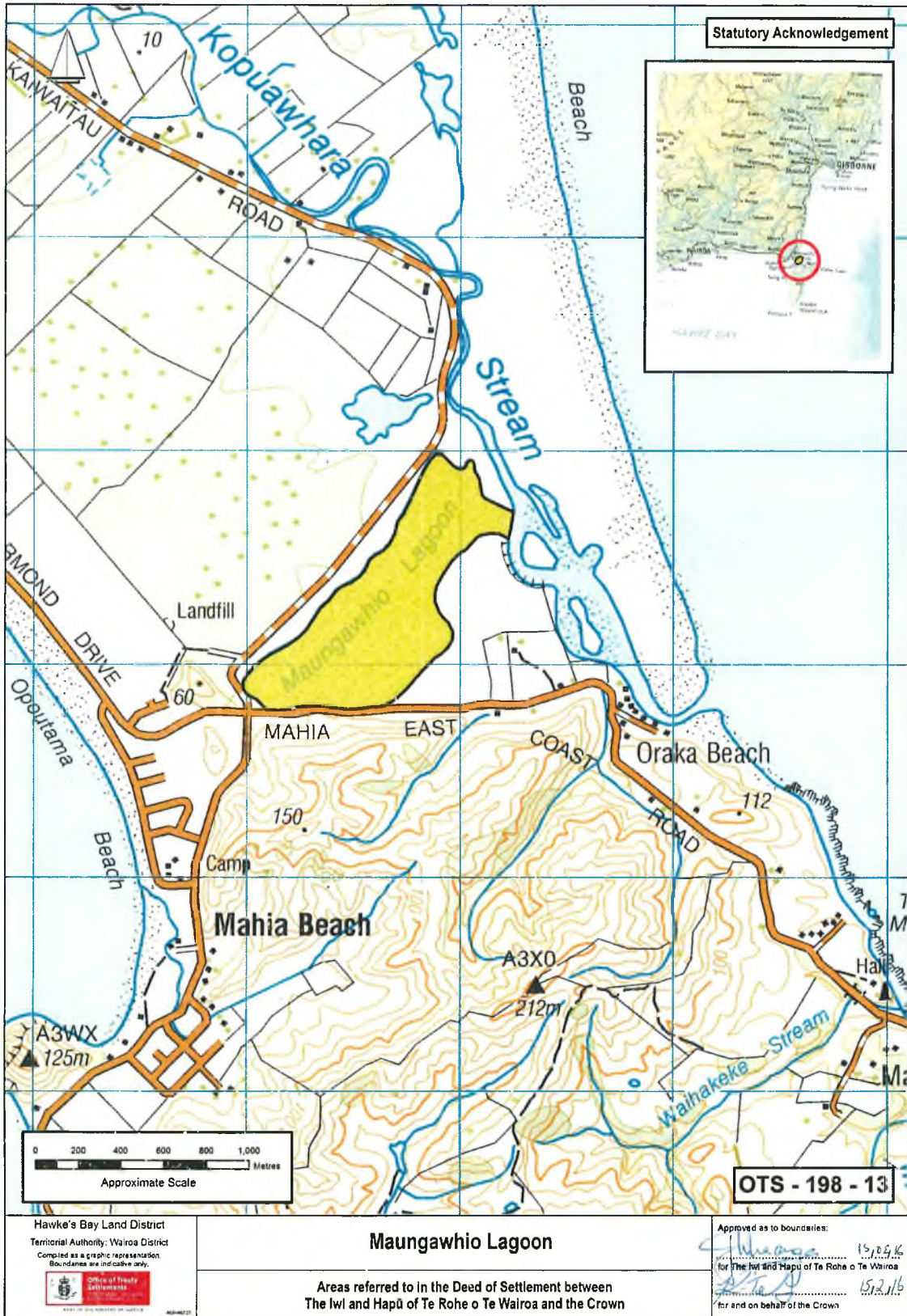
Hawke's Bay and  
Gisborne Land Districts  
Territorial Authority  
Wairoa and Gisborne Districts  
Compiled as a graphic representation  
Boundaries are indicative only



ATTACHMENTS

2: DEED PLANS

Maungawhio Lagoon





ATTACHMENTS

2: DEED PLANS

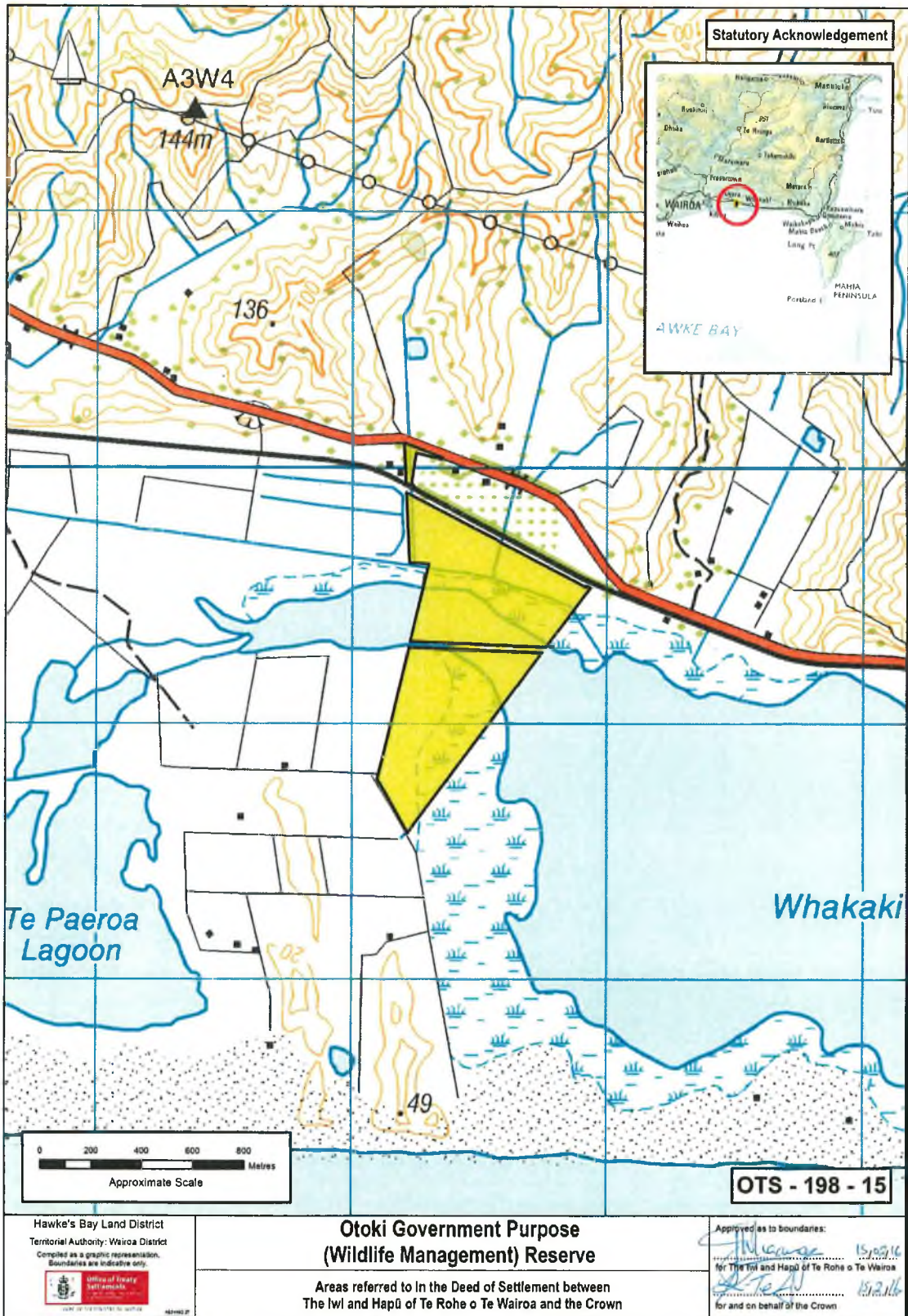
Nuhaka River and its tributaries



ATTACHMENTS

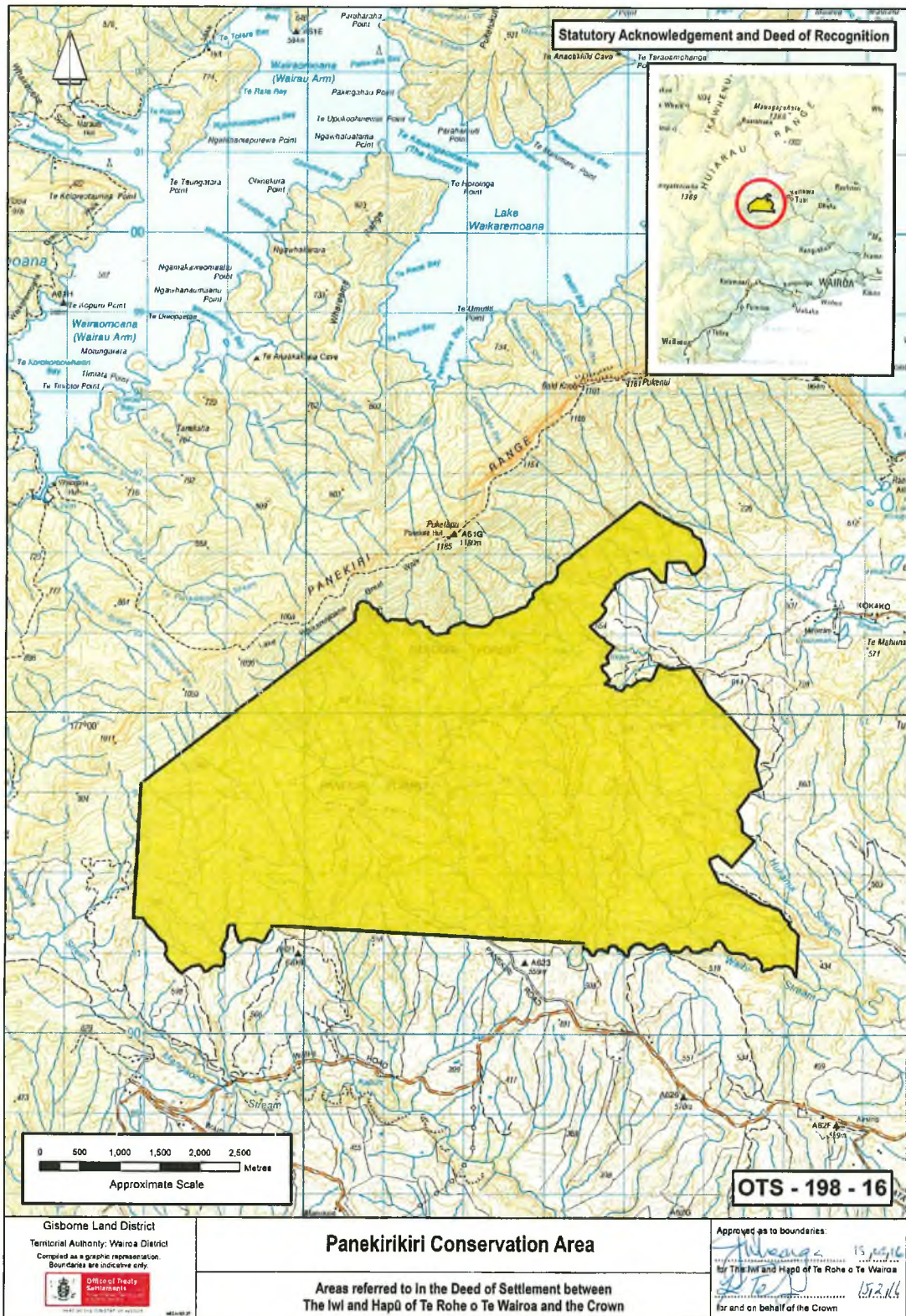
2: DEED PLANS

Otoki Government Purpose (Wildlife Management) Reserve



ATTACHMENTS  
2: DEED PLANS

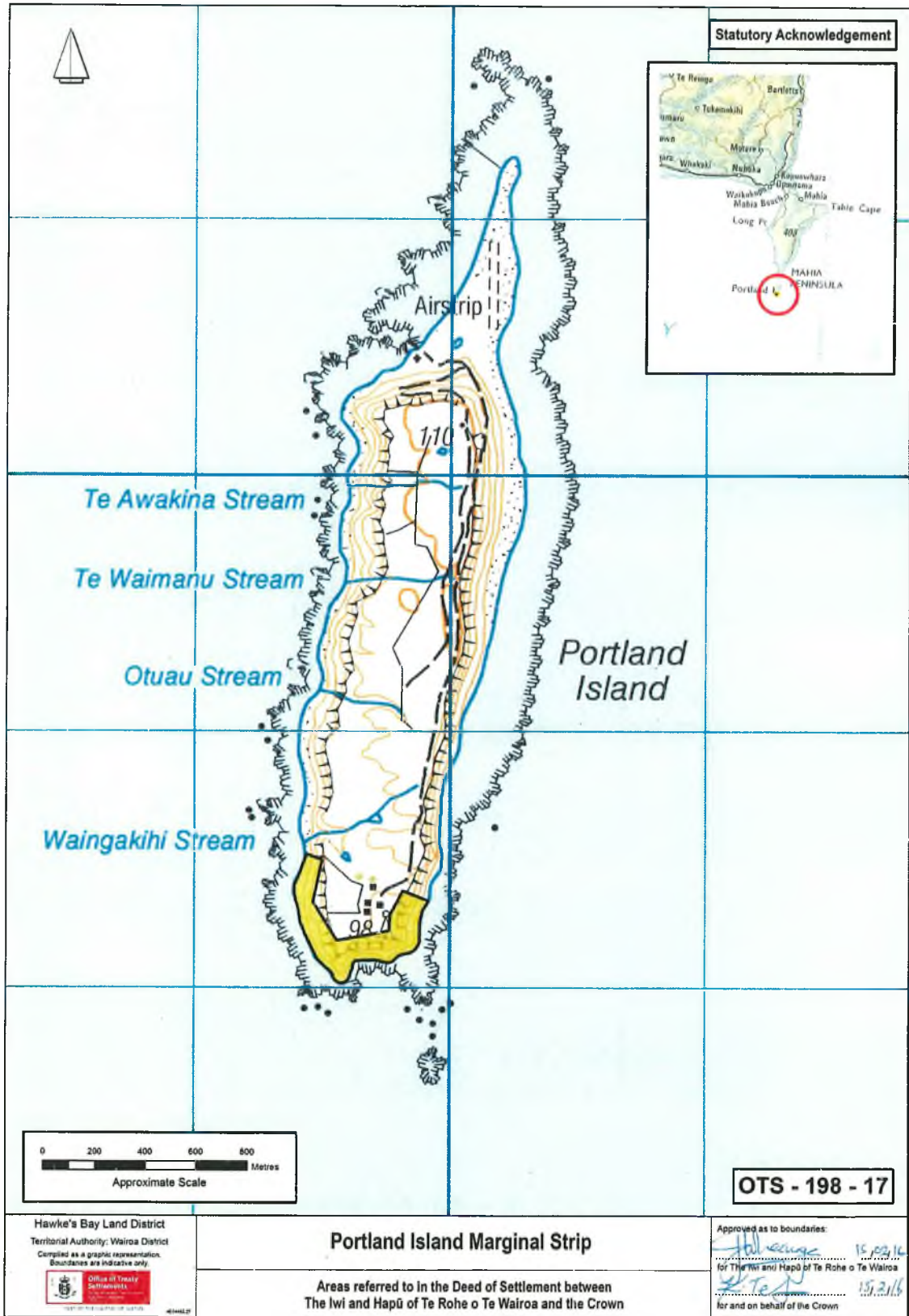
Panekirikiri Conservation Area



ATTACHMENTS

2: DEED PLANS

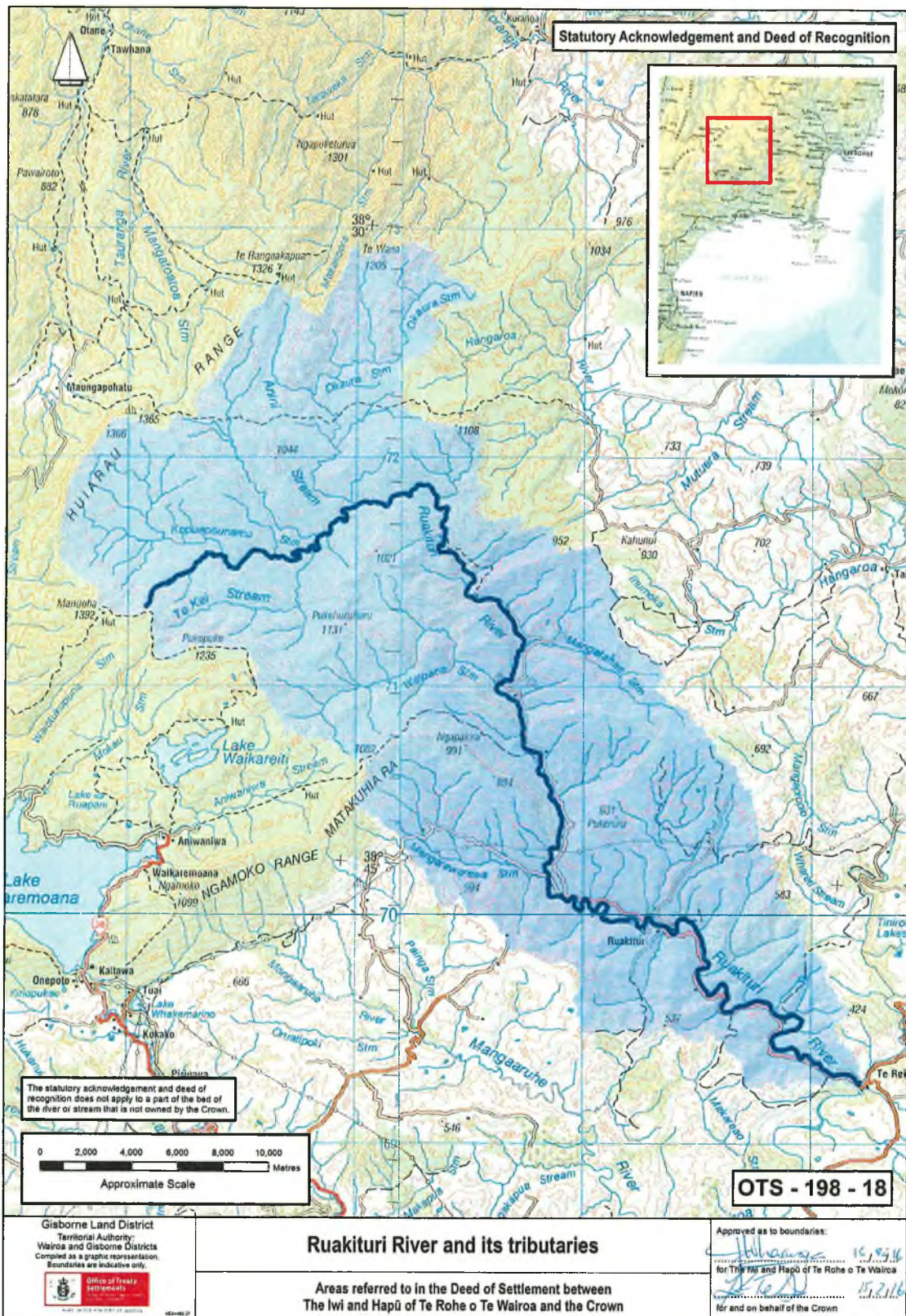
Portland Island Marginal Strip



ATTACHMENTS

2: DEED PLANS

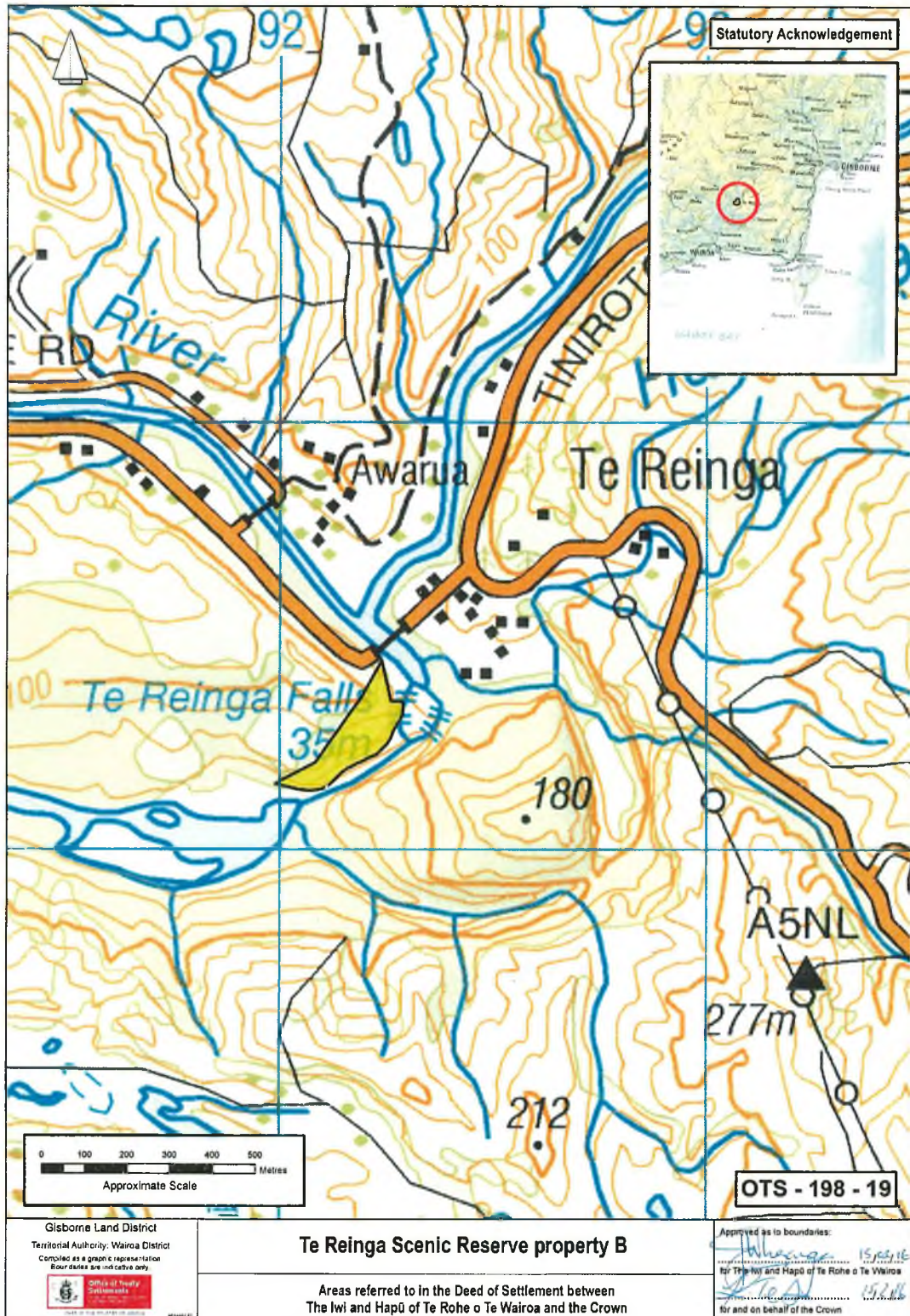
Ruakituri River and its tributaries



ATTACHMENTS

2: DEED PLANS

Te Reinga Scenic Reserve property B



20

ATTACHMENTS

2: DEED PLANS

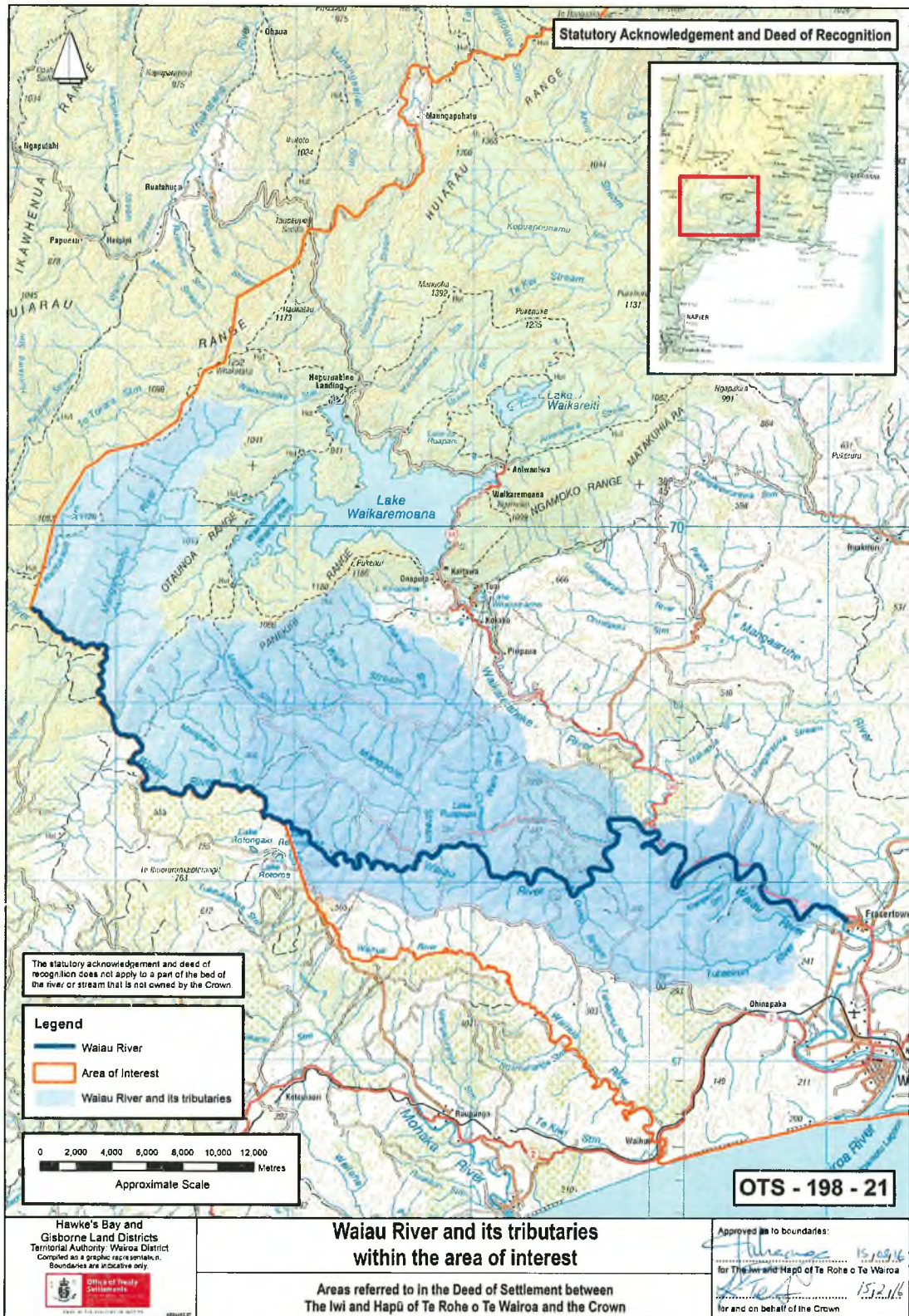
Waiatai Scenic Reserve



ATTACHMENTS

2: DEED PLANS

Waiau River and its tributaries

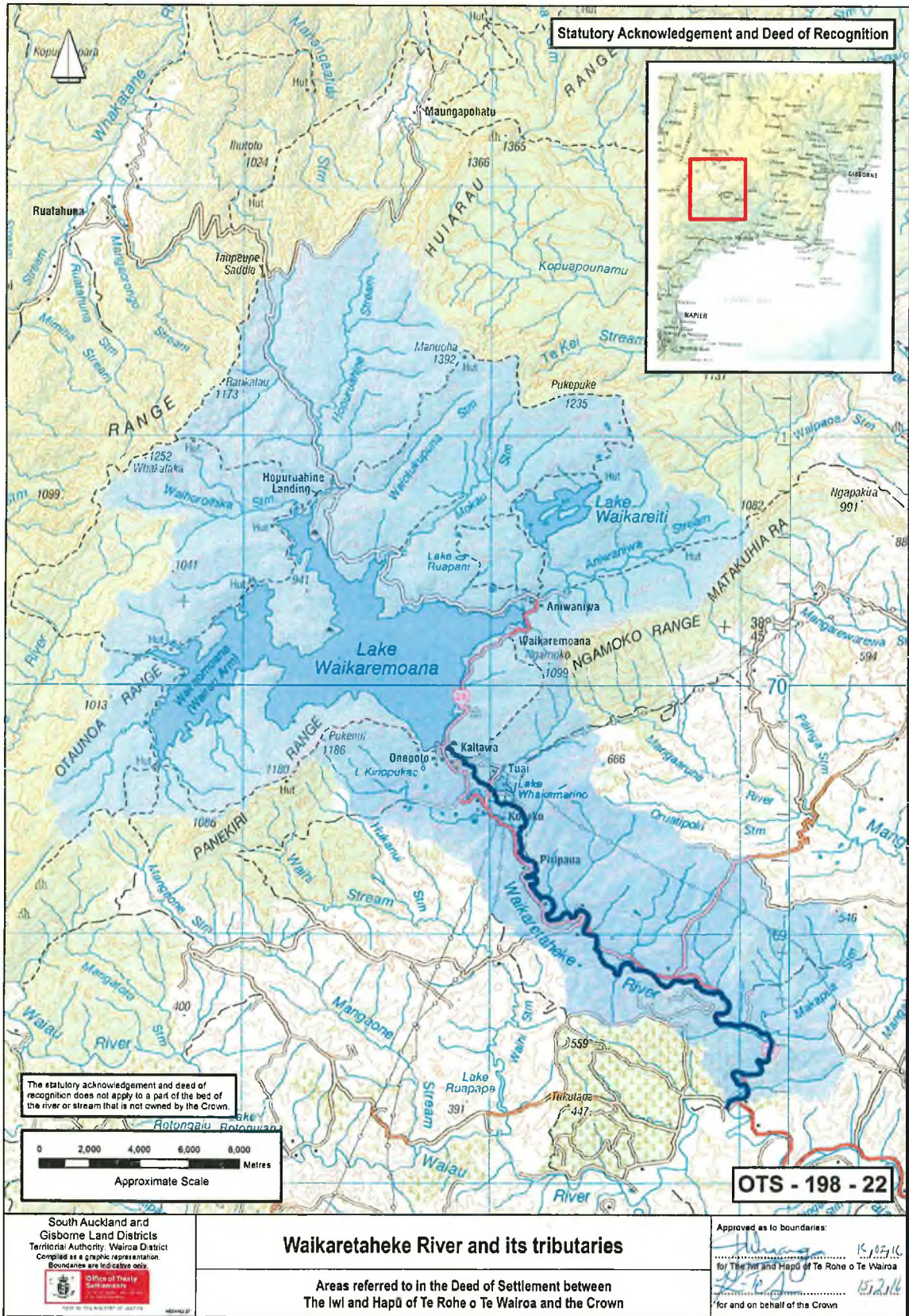




ATTACHMENTS

2: DEED PLANS

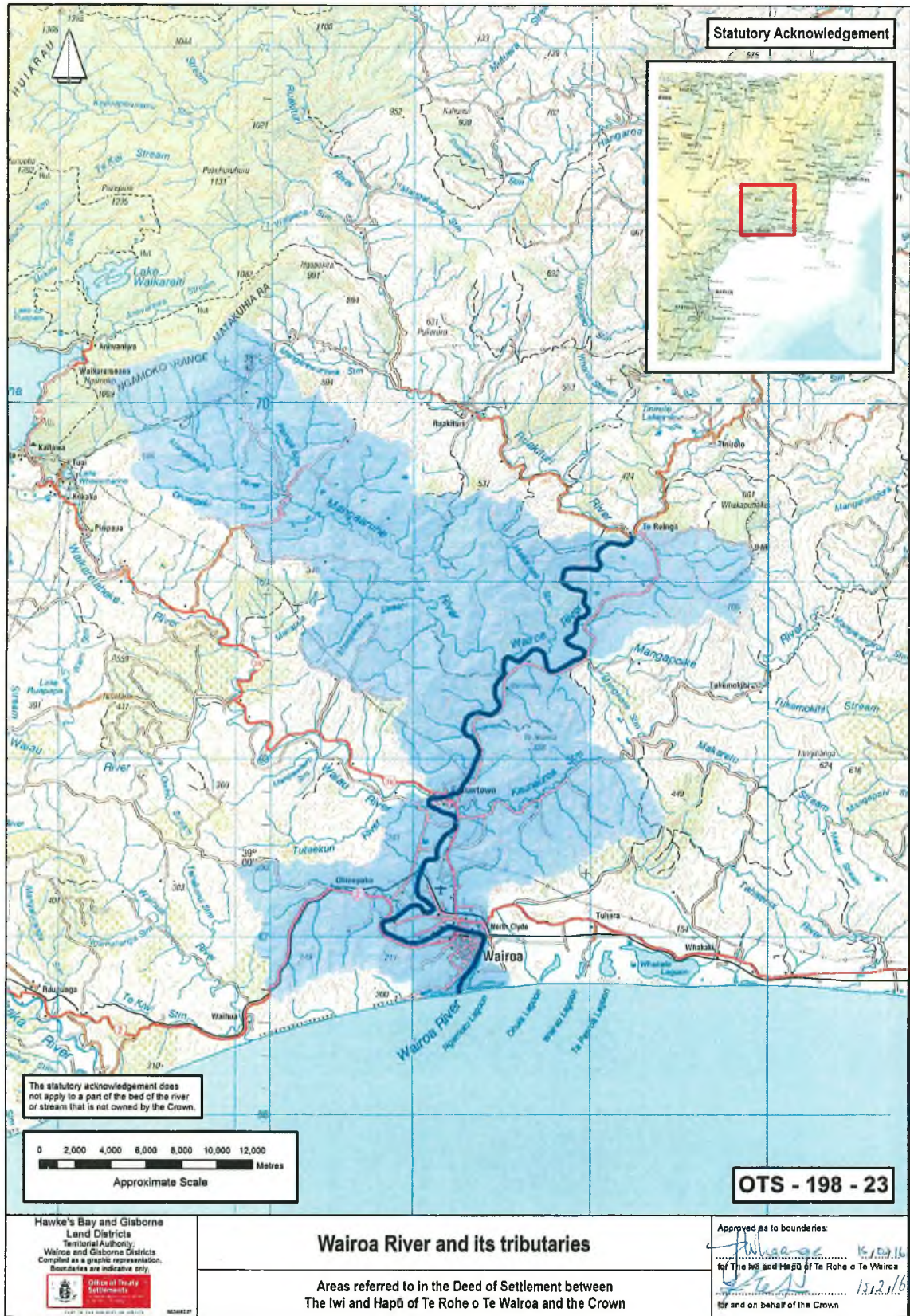
Waikaretaheke River and its tributaries



ATTACHMENTS

2: DEED PLANS

Wairoa River and its tributaries



ATTACHMENTS

2: DEED PLANS

Whangawehi Stream and its tributaries



ATTACHMENTS

2: DEED PLANS

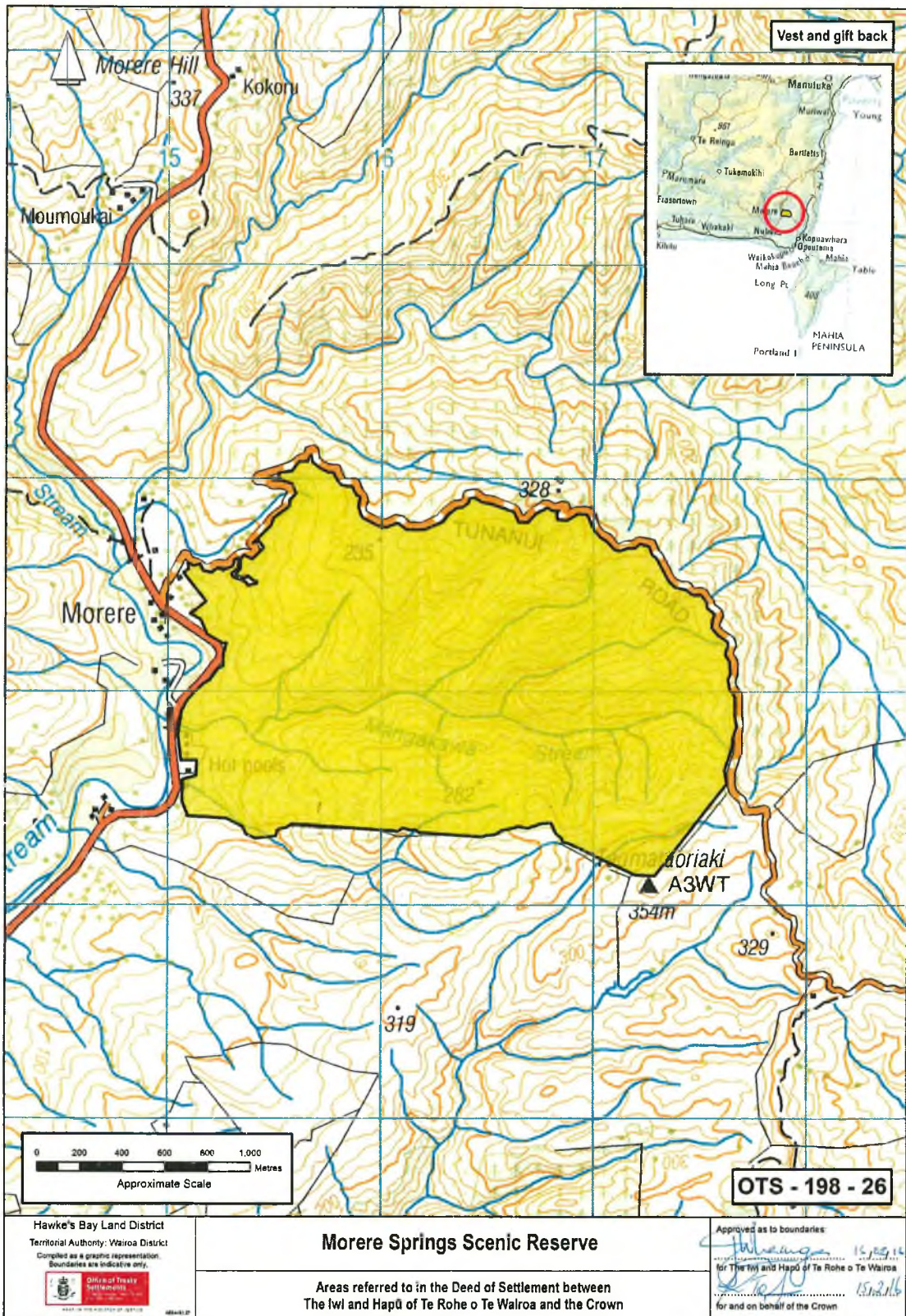
Morere Recreation Reserve



ATTACHMENTS

2: DEED PLANS

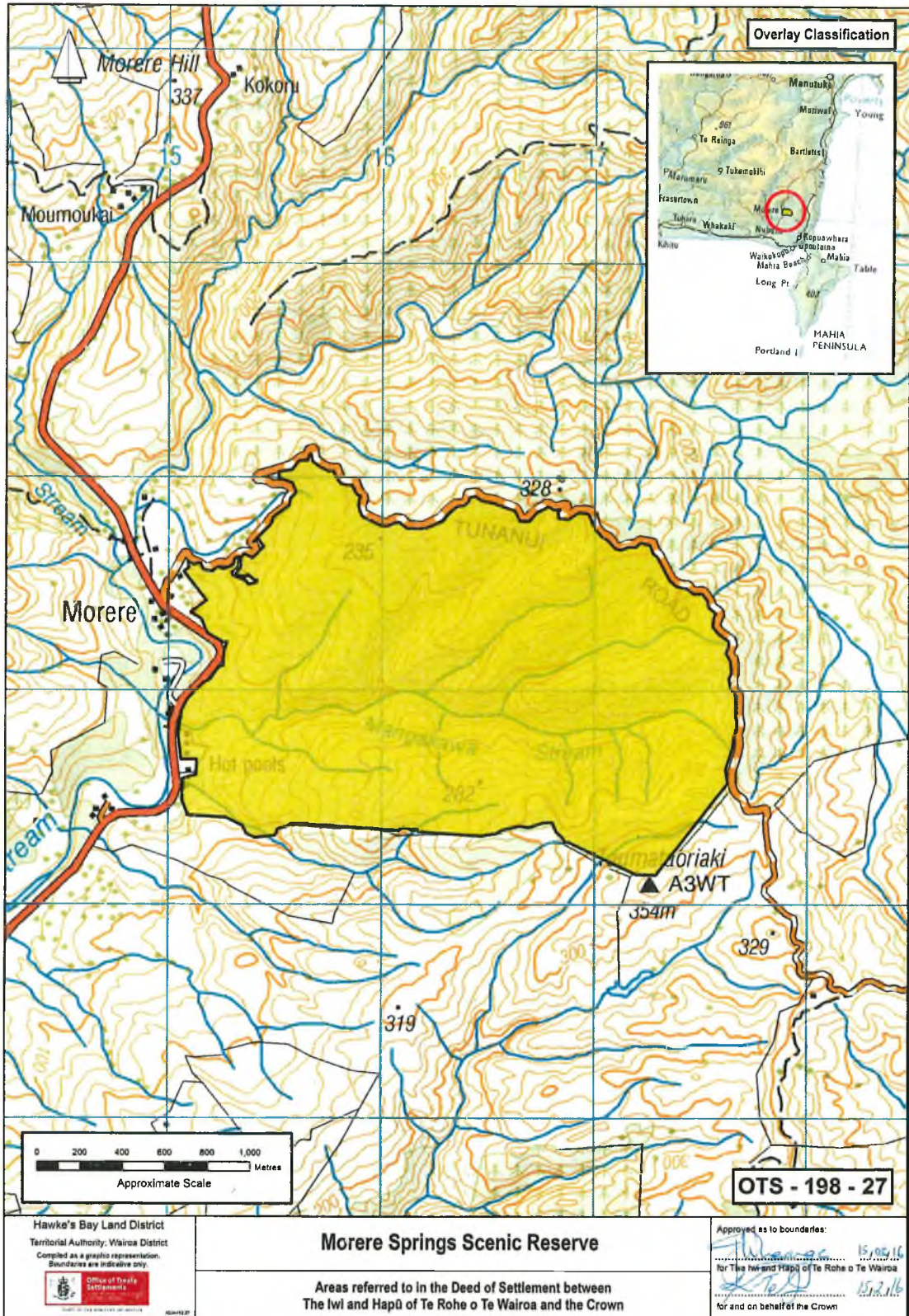
Morere Springs Scenic Reserve



ATTACHMENTS

2: DEED PLANS

Morere Springs Scenic Reserve



ATTACHMENTS

2: DEED PLANS

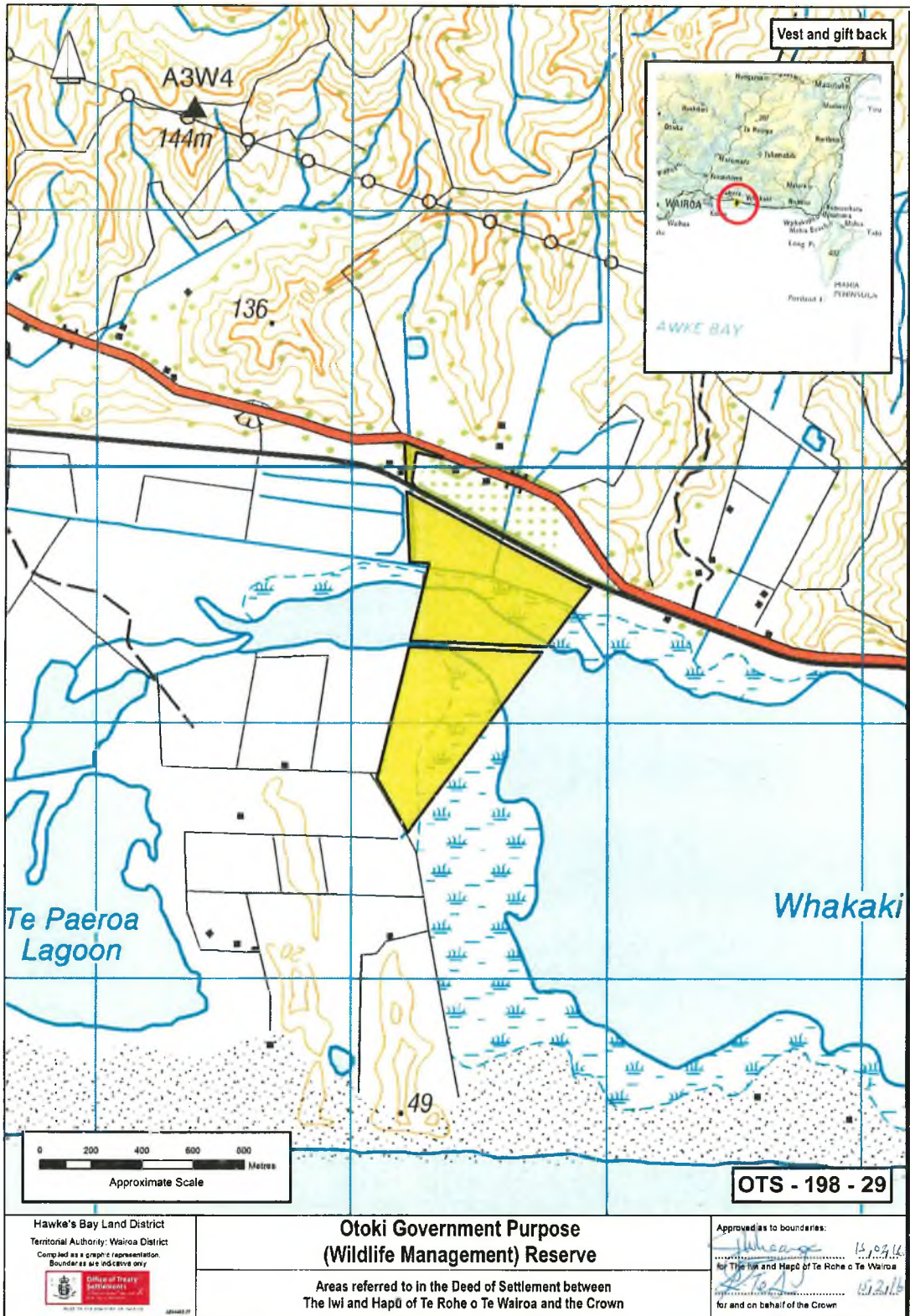
Un-named marginal strip (Waitaniwha)



ATTACHMENTS

2: DEED PLANS

Otoki Government Purpose (Wildlife Management) Reserve





ATTACHMENTS

**3 RFR LAND**

Land Holding Agency	Department of Conservation	
Agency ID	Property	Legal Description
80305	Erepeti Scenic Reserve	<i>Gisborne Land District – Wairoa District</i> 49.7763 hectares, more or less, being Section 1 Block XIIA Tuahu Survey District. All <i>Gazette</i> 1905, p 1919.
80358	Huramua Nature Reserve	<i>Hawke's Bay Land District – Wairoa District</i> 0.2517 hectares, more or less, being Lots 1 and 2 DP 6318. All computer freehold register HBK/1193.
80359	Jobsons Swamp Wildlife Reserve	<i>Hawke's Bay Land District – Wairoa District</i> 6.7538 hectares, more or less, being Block 15 Kopuawhara Crown Grant District. All <i>Gazette</i> notice 367003.1.
80375	Long Point Conservation Area	<i>Hawke's Bay Land District – Wairoa District</i> 0.5500 hectares, more or less, being Rural Section 43 Mahia.
80370	Kumi Pakarae Conservation Area	<i>Gisborne Land District – Wairoa District</i> 254.3607 hectares, more or less, being Lots 4, 5, and 6 DP 8027. Part <i>Gazette</i> 1985, p 1658.  <i>Hawke's Bay Land District – Wairoa District</i> 9.7089 hectares, more or less, being Lots 2, 3, 4, 5, and 8 DP 22114. Part <i>Gazette</i> 1985, p 1658.
80378	Mahia Esplanade Reserve	<i>Hawke's Bay Land District – Wairoa District</i> 8.7800 hectares, more or less, being Rural Section 40 Mahia. All computer freehold register HBL1/659.
80380	Mahia Peninsula Scenic Reserve	<i>Hawke's Bay Land District – Wairoa District</i> 373.7955 hectares, more or less, being Lots 1 and 2 DP 8528, Lots 1 and 4 DP 6009, Lot 1 DP 17776 and Lot 1 DP 17799. All computer freehold register HBJ1/1273.

**ATTACHMENTS**

**3: RFR LAND**

<b>Land Holding Agency</b>	<b>Department of Conservation</b>	
<b>Agency ID</b>	<b>Property</b>	<b>Legal Description</b>
80389	Mangaone Caves Historic Reserve	<i>Hawke's Bay Land District – Wairoa District</i>  1.3563 hectares, more or less, being Section 3 Block XVIII Nuhaka North Survey District. All <i>Gazette</i> notice 349888.2.
80396	Mangatahae Conservation Area	<i>Gisborne Land District – Wairoa District</i>  1.3563 hectares, more or less, being Sections 1 and 2 Block VIII Tuahu Survey District. Part <i>Gazette</i> 1905, p 2765.
80422	Morere Recreation Reserve	<i>Hawke's Bay Land District – Wairoa District</i>  0.2656 hectares, more or less, being Lot 12 DP 5368 and Section 84 Block XV Nuhaka North Survey District. All computer freehold register HBL1/1244.
80423	Morere Springs Scenic Reserve	<i>Hawke's Bay Land District – Wairoa District</i>  362.1788 hectares, more or less, being Section 35 SO 6591, Section 37 SO 6342, Section 80 SO 8057, Section 36 SO 6641, Section 21 and Part Sections 11 and 14 SO 1800. All computer freehold register HBJ4/626  1.3807 hectares, more or less, being Lot 1 DP 19799. All computer freehold register HBL4/411.
80434	Ngamotu Lagoon Wildlife Reserve	<i>Hawke's Bay Land District – Wairoa District</i>  101.2726 hectares, more or less, being Section 2 Block VI Clyde Survey District. All <i>Gazette</i> notice 242488.
80459	Opoutama Sections Conservation Area	<i>Hawke's Bay Land District – Wairoa District</i>  10.6264 hectares, more or less, being Sections 38, 39, 41, 42, 43, 44, 45, 46, 47, 48, 49, 50, 51, 52 and Part Section 40 Block III Mahanga Survey District. All <i>Gazette</i> 1958, p 1082.

**ATTACHMENTS**

**3: RFR LAND**

<b>Land Holding Agency</b>	<b>Department of Conservation</b>	
<b>Agency ID</b>	<b>Property</b>	<b>Legal Description</b>
80460	Opoutama Stock Reserve	<i>Hawke's Bay Land District – Wairoa District</i>  0.8094 hectares, more or less, being Section 20 Block III Mahanga Survey District. Part <i>Gazette</i> 1922, p 3112.
80710	Otoki Wildlife Reserve	<i>Hawke's Bay Land District – Wairoa District</i>  0.7186 hectares, more or less, being Lot 1 DP 324372. All computer freehold register 98449.  9.3830 hectares, more or less, being Lot 3 DP 324372. All computer freehold register 98451.  39.4806 hectares, more or less, being Part Whakaki 1. All computer freehold register HBE3/889.
80588	Te Reinga Scenic Reserve	<i>Gisborne Land District – Wairoa District</i>  15.6815 hectares, more or less, being Section 1 Block II and Section 5 Block VI Opoiti Survey District. Part <i>Gazette</i> 1912, p 1612.
80653	Whakamahi Lagoon Wildlife Reserve	<i>Hawke's Bay Land District – Wairoa District</i>  136.9427 hectares, more or less, being Part Section 2 Block V Clyde Survey District. All computer freehold register HBM3/248  2.3478 hectares, more or less, being Part Section 3R SO 3991 and Section 4R SO 3991. All computer freehold register HBM3/249.
80696	Wairoa River No 1 Marginal Strip	<i>Gisborne Land District – Wairoa District</i>  0.6900 hectares, more or less, being Section 1 SO 8364.
80697	Wairoa River No 2 Marginal Strip	<i>Hawke's Bay Land District – Wairoa District</i>  0.4047 hectares, more or less, being Section 6 Block XVI Taramarama Survey District.

**ATTACHMENTS**

**3: RFR LAND**

<b>Land Holding Agency</b>	<b>Department of Conservation</b>	
<b>Agency ID</b>	<b>Property</b>	<b>Legal Description</b>
80719	Te Reinga Marginal Strip	<i>Gisborne Land District – Wairoa District</i> 6.4 hectares, approximately, being Crown Land SO 2392. Subject to Survey
	Marginal Strip Waiau River	<i>Gisborne Land District – Wairoa District</i> 11.5335 hectares, more or less, being Crown Land SO 3621.
80720	Ruakituri River Marginal Strips	<i>Gisborne Land District – Wairoa District</i> 19.6 hectares, approximately, being Crown Land SO 1405 and Crown Land SO 1648. Subject to Survey
	Waiatai Scenic Reserve	<i>Hawke's Bay Land District – Wairoa District</i> 0.3920 hectares, more or less, being Section 26 Block II Clyde Survey District. All computer freehold register HBK1/1197
	Marginal Strip Wairoa River	<i>Gisborne Land District – Wairoa District</i> 1.770 hectares, more or less, being Section 2 SO 8364.
	Marginal Strip Mangapoike River	<i>Gisborne Land District – Wairoa District</i> 6.2700 hectares, more or less, being Section 2 SO 8365.
	Marginal Strip Waiau River	<i>Gisborne Land District – Wairoa District</i> 7.0820 hectares, more or less, being Crown Land SO 3621.
	Marginal Strip Waiau River	<i>Gisborne Land District – Wairoa District</i> 0.3768 hectares, more or less, being Section 53 Ardkeen Settlement.
	Marginal Strip Waiau River	<i>Gisborne Land District – Wairoa District</i> 6.3535 hectares, more or less, being Section 14 Block XIV Taramarama Survey District.

**ATTACHMENTS**

**3: RFR LAND**

<b>Land Holding Agency</b>	<b>Department of Conservation</b>	
<b>Agency ID</b>	<b>Property</b>	<b>Legal Description</b>
	Marginal Strip Makaretu River	<i>Hawke's Bay Land District – Wairoa District</i>  6.6400 hectares, more or less, being Section 7 Block XVI Opoiti Survey District.
	Marginal Strip Mangaone Stream	<i>Hawke's Bay Land District – Wairoa District</i>  3.3000 hectares, more or less, being Section 12 Block XIII Nuhaka North Survey District.
	Marginal Strip Mangaone Stream	<i>Hawke's Bay Land District – Wairoa District</i>  4.8070 hectares, more or less, being Part Section 13 Block XIII Nuhaka North Survey District.
	Marginal Strip Mangaone Stream	<i>Hawke's Bay Land District – Wairoa District</i>  0.2610 hectares, more or less, being Section 14 Block XIII Nuhaka North Survey District.
	Marginal Strip Wairoa River	<i>Hawke's Bay Land District – Wairoa District</i>  0.3035 hectares, more or less, being Section 7 Block XVI Taramarama Survey District.
	Marginal Strip Tutaekuri River	<i>Hawke's Bay Land District – Wairoa District</i>  3.9000 hectares, more or less, being Section 10 Block XIX Taramarama Survey District.
	Marginal Strip Tunanui River	<i>Hawke's Bay Land District – Wairoa District</i>  0.2111 hectares, more or less, being Section 109 Block XV Nuhaka North Survey District.
	Marginal Strip Tunanui River	<i>Hawke's Bay Land District – Wairoa District</i>  0.1005 hectares, more or less, being Section 20 Block XIX Nuhaka North Survey District.
	Marginal Strip Tunanui River	<i>Hawke's Bay Land District – Wairoa District</i>  0.0305 hectares, more or less, being Section 21 Block XIX Nuhaka North Survey District.

**ATTACHMENTS**

**3: RFR LAND**

<b>Land Holding Agency</b>	<b>Department of Conservation</b>	
<b>Agency ID</b>	<b>Property</b>	<b>Legal Description</b>
	Marginal Strip Wairoa River	<i>Hawke's Bay Land District – Wairoa District</i>  1.0125 hectares, more or less, being Section 33 Block I Clyde Survey District.
	Marginal Strip Wairoa River	<i>Hawke's Bay Land District – Wairoa District</i>  0.4125 hectares, more or less, being Section 34 Block I Clyde Survey District.
	Marginal Strip Waikokopu Stream	<i>Hawke's Bay Land District – Wairoa District</i>  0.6275 hectares, more or less, being Section 25 Block X Nuhaka Survey District.
	Marginal Strip Waikokopu Stream	<i>Hawke's Bay Land District – Wairoa District</i>  0.3680 hectares, more or less, being Section 26 Block X Nuhaka Survey District.
	Marginal Strip Waikokopu Stream	<i>Hawke's Bay Land District – Wairoa District</i>  0.1060 hectares, more or less, being Section 27 Block X Nuhaka Survey District.
	Marginal Strip Waitaniwha Bay	<i>Hawke's Bay Land District – Wairoa District</i>  2.1650 hectares, more or less, being Section 29 Block X Nuhaka Survey District.
	Marginal Strip Mokotahi	<i>Hawke's Bay Land District – Wairoa District</i>  1.9120 hectares, more or less, being Section 45 Block V Mahanga Survey District.
	Marginal Strip Portland Island	<i>Hawke's Bay Land District – Wairoa District</i>  6.8700 hectares, more or less, being Section 3 Block XI Mahia Survey District. Part Gazette 1983, p 864
	Marginal Strip Kinikini  (Parcel ID. 4221313)	<i>Hawke's Bay Land District – Wairoa District</i>  1.61 hectares, approximately, being Crown Land situated in Block VIII Mahia Survey District. Subject to Survey.

**ATTACHMENTS**

**3: RFR LAND**

<b>Land Holding Agency</b>	<b>Housing New Zealand Corporation</b>	
<b>Agency ID</b>	<b>Property</b>	<b>Legal Description</b>
HSM0001240	Wairoa	<i>Hawke's Bay Land District – Wairoa District</i>  0.1012 hectares, more or less, being Section 608 SO 9437. All computer freehold register HBC1/1313.
HSS0020203	Wairoa	<i>Hawke's Bay Land District – Wairoa District</i>  0.0677 hectares, more or less, being Lot 21 DP 8125. All computer freehold register HBK1/499.
HSS0020204	Wairoa	<i>Hawke's Bay Land District – Wairoa District</i>  0.0664 hectares, more or less, being Lot 12 DP 8125. All computer freehold register HBK1/496.
HSS0020206	Wairoa	<i>Hawke's Bay Land District – Wairoa District</i>  0.0782 hectares, more or less, being Lot 26 DP 8127. All computer freehold register HBP1/1147.
HSS0020207	Wairoa	<i>Hawke's Bay Land District – Wairoa District</i>  0.0859 hectares, more or less, being Lot 28 DP 8127. All computer freehold register HBP1/1149.
HSS0020220	Wairoa	<i>Hawke's Bay Land District – Wairoa District</i>  0.0801 hectares, more or less, being Lot 32 DP 8127. All computer freehold register HBP1/1162.
HSS0020341	Wairoa	<i>Hawke's Bay Land District – Wairoa District</i>  0.0930 hectares, more or less, being Lot 6 DP 8181. All computer freehold register HBP1/880.
HSS0020342	Wairoa	<i>Hawke's Bay Land District – Wairoa District</i>  0.1007 hectares, more or less, being Lot 5 DP 8181. All computer freehold register HBP1/879.
HSS0020367	Wairoa	<i>Hawke's Bay Land District – Wairoa District</i>  0.0765 hectares, more or less, being Lot 4 DP 8183. All computer freehold register HBJ4/214.

**ATTACHMENTS**

**3: RFR LAND**

<b>Land Holding Agency</b>	<b>Housing New Zealand Corporation</b>	
<b>Agency ID</b>	<b>Property</b>	<b>Legal Description</b>
HSS0020453	Wairoa	<i>Hawke's Bay Land District – Wairoa District</i>  0.0695 hectares, more or less, being Lot 20 DP 8567. All computer freehold register HBJ2/5.
HSS0020454	Wairoa	<i>Hawke's Bay Land District – Wairoa District</i>  0.0948 hectares, more or less, being Lot 21 DP 8567. All computer freehold register HBJ2/6.
HSS0020456	Wairoa	<i>Hawke's Bay Land District – Wairoa District</i>  0.1069 hectares, more or less, being Lot 29 DP 8567. All computer freehold register HBJ2/11.
HSS0020457	Wairoa	<i>Hawke's Bay Land District – Wairoa District</i>  0.0876 hectares, more or less, being Lot 30 DP 8567. All computer freehold register HBJ2/12.
HSS0020464	Wairoa	<i>Hawke's Bay Land District – Wairoa District</i>  0.0670 hectares, more or less, being Lot 12 DP 8567. All computer freehold register HBJ1/1497.
HSS0020465	Wairoa	<i>Hawke's Bay Land District – Wairoa District</i>  0.0678 hectares, more or less, being Lot 13 DP 8567. All computer freehold register HBJ1/1498.
HSS0020466	Wairoa	<i>Hawke's Bay Land District – Wairoa District</i>  0.0832 hectares, more or less, being Lot 14 DP 8567. All computer freehold register HBJ1/1499.
HSS0020471	Wairoa	<i>Hawke's Bay Land District – Wairoa District</i>  0.0892 hectares, more or less, being Lot 16 DP 8567. All computer freehold register HBJ2/1.
HSS0020472	Wairoa	<i>Hawke's Bay Land District – Wairoa District</i>  0.0769 hectares, more or less, being Lot 17 DP 8567. All computer freehold register HBJ2/2.



**ATTACHMENTS**

**3: RFR LAND**

<b>Land Holding Agency</b>	<b>Housing New Zealand Corporation</b>	
<b>Agency ID</b>	<b>Property</b>	<b>Legal Description</b>
HSS0020625	Wairoa	<i>Hawke's Bay Land District – Wairoa District</i>  0.0896 hectares, more or less, being Lot 6 DP 8813. All computer freehold register HBE3/799.
HSS0020626	Wairoa	<i>Hawke's Bay Land District – Wairoa District</i>  0.0927 hectares, more or less, being Lot 7 DP 8813. All computer freehold register HBE3/800.
HSS0020749	Wairoa	<i>Hawke's Bay Land District – Wairoa District</i>  0.0888 hectares, more or less, being Lot 2 DP 9984. All computer freehold register HBP1/1154.
HSS0020750	Wairoa	<i>Hawke's Bay Land District – Wairoa District</i>  0.1057 hectares, more or less, being Lot 7 DP 9984. All computer freehold register HBP1/1158
HSS0020751	Wairoa	<i>Hawke's Bay Land District – Wairoa District</i>  0.0797 hectares, more or less, being Lot 8 DP 9984. All computer freehold register HBP1/1159.
HSS0020752	Wairoa	<i>Hawke's Bay Land District – Wairoa District</i>  0.0814 hectares, more or less, being Lot 9 DP 9984. All computer freehold register HBP1/1160.
HSS0020762	Wairoa	<i>Hawke's Bay Land District – Wairoa District</i>  0.0781 hectares, more or less, being Lot 4 DP 9984. All computer freehold register HBP1/1155.
HSS0020882	Wairoa	<i>Hawke's Bay Land District – Wairoa District</i>  0.0667 hectares, more or less, being Lot 2 DP 10920. All computer freehold register HBK1/310.
HSS0020883	Wairoa	<i>Hawke's Bay Land District – Wairoa District</i>  0.0796 hectares, more or less, being Lot 3 DP 11395. All computer freehold register HBK2/469.

**ATTACHMENTS**

**3: RFR LAND**

<b>Land Holding Agency</b>	<b>Housing New Zealand Corporation</b>	
<b>Agency ID</b>	<b>Property</b>	<b>Legal Description</b>
HSS0020930	Wairoa	<i>Hawke's Bay Land District – Wairoa District</i>  0.0743 hectares, more or less, being Lot 5 DP 10920. All computer freehold register HBK1/313.
HSS0020931	Wairoa	<i>Hawke's Bay Land District – Wairoa District</i>  0.0662 hectares, more or less, being Lot 4 DP 10920. All computer freehold register HBK1/312.
HSS0020933	Wairoa	<i>Hawke's Bay Land District – Wairoa District</i>  0.0832 hectares, more or less, being Lot 1 DP 11395. All computer freehold register HBK2/467.
HSS0021002	Wairoa	<i>Hawke's Bay Land District – Wairoa District</i>  0.0657 hectares, more or less, being Lot 19 DP 10974. All computer freehold register HBM4/139.
HSS0021003	Wairoa	<i>Hawke's Bay Land District – Wairoa District</i>  0.1110 hectares, more or less, being Lot 24 DP 10974. All computer freehold register HBM4/141.
HSS0021062	Wairoa	<i>Hawke's Bay Land District – Wairoa District</i>  0.0688 hectares, more or less, being Lot 4 DP 10974. All computer freehold register HBP1/873.
HSS0021110	Wairoa	<i>Hawke's Bay Land District – Wairoa District</i>  0.0634 hectares, more or less, being Lot 9 DP 11723. All computer freehold register HBK2/670.
HSS0021182	Wairoa	<i>Hawke's Bay Land District – Wairoa District</i>  0.0711 hectares, more or less, being Lot 12 DP 12210. All computer freehold register HBP1/882.
HSS0021250	Wairoa	<i>Hawke's Bay Land District – Wairoa District</i>  0.0733 hectares, more or less, being Lot 15 DP 12210. All computer freehold register HBP1/885.

**ATTACHMENTS**

**3: RFR LAND**

<b>Land Holding Agency</b>	<b>Housing New Zealand Corporation</b>	
<b>Agency ID</b>	<b>Property</b>	<b>Legal Description</b>
HSS0021366	Wairoa	<i>Hawke's Bay Land District – Wairoa District</i>  0.0783 hectares, more or less, being Lot 3 DP 15337. All computer freehold register HBH1/1022.
HSS0021429	Wairoa	<i>Hawke's Bay Land District – Wairoa District</i>  0.0696 hectares, more or less, being Lot 9 DP 14009. All computer freehold register HBH1/705.
HSS0021430	Wairoa	<i>Hawke's Bay Land District – Wairoa District</i>  0.0696 hectares, more or less, being Lot 10 DP 14009. All computer freehold register HBH1/706.
HSS0021431	Wairoa	<i>Hawke's Bay Land District – Wairoa District</i>  0.0613 hectares, more or less, being Lot 11 DP 14009. All computer freehold register HBH1/707.
HSS0021513	Wairoa	<i>Hawke's Bay Land District – Wairoa District</i>  0.0613 hectares, more or less, being Lot 11 DP 15337. All computer freehold register HBH1/1030.
HSS0021514	Wairoa	<i>Hawke's Bay Land District – Wairoa District</i>  0.0923 hectares, more or less, being Lot 8 DP 15337. All computer freehold register HBH1/1027.
HSS0021515	Wairoa	<i>Hawke's Bay Land District – Wairoa District</i>  0.0593 hectares, more or less, being Lot 10 DP 15337. All computer freehold register HBH1/1029.
HSS0021546	Wairoa	<i>Hawke's Bay Land District – Wairoa District</i>  0.0659 hectares, more or less, being Lot 2 DP 15337. All computer freehold register HBH1/1021.
HSS0021579	Wairoa	<i>Hawke's Bay Land District – Wairoa District</i>  0.0674 hectares, more or less, being Lot 18 DP 15337. All computer freehold register HBH1/1037.

**ATTACHMENTS**

**3: RFR LAND**

<b>Land Holding Agency</b>	<b>Housing New Zealand Corporation</b>	
<b>Agency ID</b>	<b>Property</b>	<b>Legal Description</b>
HSS0021613	Wairoa	<i>Hawke's Bay Land District – Wairoa District</i>  0.0920 hectares, more or less, being Lot 2 DP 15492. All computer freehold register HBM2/244.
HSS0021620	Wairoa	<i>Hawke's Bay Land District – Wairoa District</i>  0.0635 hectares, more or less, being Lot 2 DP 16324. All computer freehold register HBJ1/386.
HSS0021624	Wairoa	<i>Hawke's Bay Land District – Wairoa District</i>  0.1019 hectares, more or less, being Lot 9 DP 8716. All computer freehold register HBK1/1309.
HSS0021633	Wairoa	<i>Hawke's Bay Land District – Wairoa District</i>  0.0620 hectares, more or less, being Lot 15 DP 17407. All computer freehold register HBK1/1095.
HSS0021641	Wairoa	<i>Hawke's Bay Land District – Wairoa District</i>  0.0883 hectares, more or less, being Lot 31 DP 17406. All computer freehold register HBK1/1080.
HSS0021659	Wairoa	<i>Hawke's Bay Land District – Wairoa District</i>  0.0573 hectares, more or less, being Lot 39 DP 17406. All computer freehold register HBK1/1088.
HSS0021682	Wairoa	<i>Hawke's Bay Land District – Wairoa District</i>  0.0580 hectares, more or less, being Lot 40 DP 17406. All computer freehold register HBK1/1089.
HSS0023480	Wairoa	<i>Hawke's Bay Land District – Wairoa District</i>  0.0635 hectares, more or less, being Lot 3 DP 16324. All computer freehold register HBJ1/387.
HSS0026265	Wairoa	<i>Hawke's Bay Land District – Wairoa District</i>  0.0645 hectares, more or less, being Lot 8 DP 17406. All computer freehold register HBK1/1072.

**ATTACHMENTS**

**3: RFR LAND**

<b>Land Holding Agency</b>	<b>Housing New Zealand Corporation</b>	
<b>Agency ID</b>	<b>Property</b>	<b>Legal Description</b>
HSS0026640	Nuhaka	<i>Hawke's Bay Land District – Wairoa District</i>  0.1012 hectares, more or less, being Lot 7 DP 1955. All computer freehold register HB109/286.
HSS0026641	Nuhaka	<i>Hawke's Bay Land District – Wairoa District</i>  0.1392 hectares, more or less, being Lot 2 DP 1955. All computer freehold register HBK3/1223.
HSS0026642	Nuhaka	<i>Hawke's Bay Land District – Wairoa District</i>  0.0809 hectares, more or less, being Lot 3 DP 1955. All computer freehold register HBK1/1067.
TUD0001039 and TUD0001040	Wairoa	<i>Hawke's Bay Land District – Wairoa District</i>  0.1510 hectares, more or less, being Lot 5 DP 9984. All computer freehold register HBP1/1156.
TUS0003530	Wairoa	<i>Hawke's Bay Land District – Wairoa District</i>  0.0506 hectares, more or less, being Lot 1 DP 27127. All computer freehold register HBW3/534.
TUS0003531	Wairoa	<i>Hawke's Bay Land District – Wairoa District</i>  0.0730 hectares, more or less, being Lot 2 DP 27127. All computer freehold register HBW3/535.
TUS0003570 and TUS0003571	Wairoa	<i>Hawke's Bay Land District – Wairoa District</i>  0.1016 hectares, more or less, being Lot 9 DP 8125. All computer freehold register HBK1/493.
TUS0003574 and TUS0003575	Wairoa	<i>Hawke's Bay Land District – Wairoa District</i>  0.1230 hectares, more or less, being Lot 22 DP 8127. All computer freehold register HBP1/1144.
TUS0003576	Wairoa	<i>Hawke's Bay Land District – Wairoa District</i>  0.0554 hectares, more or less, being Lot 1 DP 27563. All computer freehold register HBW4/343.

**ATTACHMENTS**

**3: RFR LAND**

<b>Land Holding Agency</b>	<b>Housing New Zealand Corporation</b>	
<b>Agency ID</b>	<b>Property</b>	<b>Legal Description</b>
TUS0003577	Wairoa	<i>Hawke's Bay Land District – Wairoa District</i>  0.0673 hectares, more or less, being Lot 2 DP 27563. All computer freehold register HBW4/344.
TUS0003586	Wairoa	<i>Hawke's Bay Land District – Wairoa District</i>  0.0631 hectares, more or less, being Lot 1 DP 27066. All computer freehold register HBW3/401.
TUS0003587	Wairoa	<i>Hawke's Bay Land District – Wairoa District</i>  0.0627 hectares, more or less, being Lot 2 DP 27066. All computer freehold register HBW3/402.
TUS0003599*	Wairoa	<i>Hawke's Bay Land District – Wairoa District</i>  0.0478 hectares, more or less, being Lot 2 DP 9761. All computer freehold register HBP1/981.
TUS0003997 and TUS0003998	Wairoa	<i>Hawke's Bay Land District – Wairoa District</i>  0.1147 hectares, more or less, being Lot 15 DP 15337. All computer freehold register HBH1/1034.
TUS0004001 and TUS0004002	Wairoa	<i>Hawke's Bay Land District – Wairoa District</i>  0.1082 hectares, more or less, being Section 854 SO 5361. All computer freehold register HBP2/704.
HSS0026844	Wairoa	<i>Hawke's Bay Land District – Wairoa District</i>  0.3958 hectares, more or less, being Town Section 492 Clyde and Part Town Sections 490, 491, 619 and 620 Clyde. All computer freehold register HBD4/748.
HSS0027302 and HSS0027303	Wairoa	<i>Hawke's Bay Land District – Wairoa District</i>  0.1790 hectares, more or less, being Lots 9 and 10 DP 12092. All computer freehold register HBV1/560.

\* Properties for sale on the open market as at 16 October 2015.

**ATTACHMENTS**

**3: RFR LAND**

<b>Land Holding Agency</b>	<b>Land Information New Zealand</b>	
<b>Agency ID</b>	<b>Property</b>	<b>Legal Description</b>
LIPS 11356	Awamate Road, Wairoa	<i>Hawke's Bay Land District – Wairoa District</i> 0.7663 hectares, more or less, being Section 11 Block I Clyde Survey District. Part <i>Gazette</i> 1956, p 1031.
LIPS 11391	Nuhaka-Opoutama Road, Waikokopu	<i>Hawke's Bay Land District – Wairoa District</i> 1.46 hectares, approximately, being Part Waikokopu 3A Block. Part <i>Gazette</i> 1922, p 2234.
LIPS 11451, 11452, 11453, 11454, 11455, 11486, 11487, 11449 and 11450	Ormond Street, Wairoa	<i>Hawke's Bay Land District – Wairoa District</i> 0.7790 hectares, more or less, being Part Orangitirohia 14B. Part <i>Gazette</i> 1927, p 735. Subject to Survey
LIPS 11443	Kaimoana Street, Wairoa	<i>Hawke's Bay Land District – Wairoa District</i> 0.4250 hectares, approximately, being Part Railway. Located on Parcel ID 4242869. Subject to Survey.
LIPS 11444	Kaimoana Street, Wairoa	<i>Hawke's Bay Land District – Wairoa District</i> 0.2236 hectares, approximately, being Part Railway. Located on Parcel ID 4242869. Subject to Survey.
LIPS 11445	Ormond Street, Wairoa	<i>Hawke's Bay Land District – Wairoa District</i> 0.1752 hectares, approximately, being Part Railway. Located on Parcel ID 4242869. Subject to Survey.
LIPS 11446	Ormond Street, Wairoa	<i>Hawke's Bay Land District – Wairoa District</i> 0.4600 hectares, approximately, being Part Railway. Located on Parcel ID 4242869. Subject to Survey.
LIPS 11447	Ormond Street, Wairoa	<i>Hawke's Bay Land District – Wairoa District</i> 0.1190 hectares, approximately, being Part Railway. Located on Parcel ID 4242869. Subject to Survey.
LIPS 11448	Kaimoana Street, Wairoa	<i>Hawke's Bay Land District – Wairoa District</i> 1.0640 hectares, approximately, being Part Railway. Located on Parcel ID 4242869. Subject to Survey.

**ATTACHMENTS**

**3: RFR LAND**

<b>Land Holding Agency</b>	<b>Land Information New Zealand</b>	
<b>Agency ID</b>	<b>Property</b>	<b>Legal Description</b>
LIPS 11482	Ormond Street, Wairoa	<i>Hawke's Bay Land District – Wairoa District</i> 0.3600 hectares, approximately, being Part Railway. Located on Parcel ID 4242869. Subject to Survey.
LIPS 15237	North Clyde, Wairoa	<i>Hawke's Bay Land District – Wairoa District</i> 0.1296 hectares, more or less, being Part Orangitirohia 20 Block. All computer freehold register HBK2/761.

<b>Land Holding Agency</b>	<b>Ministry of Justice (Office of Treaty Settlements)</b>	
<b>Agency ID</b>	<b>Property</b>	<b>Legal Description</b>
692	5 Scott Street, Wairoa	<i>Hawke's Bay Land District – Wairoa District</i> 0.1011 hectares, more or less, being Section 1 SO 9480. Part Gazette notice 614656.1.
693	7 Scott Street, Wairoa	<i>Hawke's Bay Land District – Wairoa District</i> 0.1013 hectares, more or less, being Section 2 SO 9480. Part Gazette notice 614656.1.
694	9 Scott Street, Wairoa	<i>Hawke's Bay Land District – Wairoa District</i> 0.1013 hectares, more or less, being Section 3 SO 9480. Part Gazette notice 614656.1.
695	29 & 31 Scott Street, Wairoa	<i>Hawke's Bay Land District – Wairoa District</i> 0.20 hectares, approximately, being Lots 27 and 28 Deeds Plan 577. All computer freehold register HBL3/889. Limited as to parcels. Subject to survey.
696	146 McLean Street, Wairoa	<i>Hawke's Bay Land District – Wairoa District</i> 0.1015 hectares, more or less, being Section 5 SO 9480. Part Gazette notice 614656.1.



**ATTACHMENTS**

**3: RFR LAND**

<b>Land Holding Agency</b>	<b>Ministry of Justice (Office of Treaty Settlements)</b>	
<b>Agency ID</b>	<b>Property</b>	<b>Legal Description</b>
783	27-35 Kitchener Road, Wairoa	<i>Hawke's Bay Land District – Wairoa District</i> 0.5059 hectares, more or less, being Lot 4 DP 13446. All computer freehold register HBE4/1289.  0.1012 hectares, more or less, being Lot 3 DP 18315. Part Transfer 698772.2.
1163	Corner of Paul Street & Queen Street, Wairoa	<i>Hawke's Bay Land District – Wairoa District</i> 0.1226 hectares, more or less, being Part Lot 1 DP 1839 and Part Lot 2 DP 9153. Part <i>Gazette</i> Notice 594604.1.  0.0500 hectares, approximately, Part Town Section 360 Clyde. Part <i>Gazette</i> notice 594604.1. Limited as to parcels. Subject to survey.
1332	East end of Ormond Drive, Opoutama	<i>Hawke's Bay Land District – Wairoa District</i> 4.3400 hectares, more or less, being Section 35 SO 3066. All <i>Gazette</i> notice 709317.1.
1500	1105 -1117 Nuhaka Opoutama Road, Opoutama	<i>Hawke's Bay Land District – Wairoa District</i> 1.6956 hectares, more or less, being Section 1 SO 351224. All computer freehold register 219158.
1522	5 Te Maara Street, Nuhaka	<i>Hawke's Bay Land District – Wairoa District</i> 0.2363 hectares, more or less, being Lot 3 DP 24030. All computer freehold register HBV1/1207.
1543	596 SH2 - ex Turiroa School, Wairoa	<i>Hawke's Bay Land District – Wairoa District</i> 2.2713 hectares, more or less, being Lot 1 Agricultural Section 3 Turiroa. All computer freehold register 208619.
1633	158 Carroll Street (SH 38), Wairoa	<i>Hawke's Bay Land District – Wairoa District</i> 2.6737 hectares, more or less, being Lot 2 DP 390414. All computer freehold register 362719.
1856	Mahia East Coast Road	<i>Hawke's Bay Land District – Wairoa District</i> 524.4585 hectares, more or less, being Lots 1, 2 and 3 DP 23976. All Transfer 9249187.

**ATTACHMENTS**

**3: RFR LAND**

<b>Ministry of Justice (Office of Treaty Settlements)</b>		
<b>Land Holding Agency</b>		
<b>Agency ID</b>	<b>Property</b>	<b>Legal Description</b>
1892	103 Haramua Road, Wairoa	<i>Hawke's Bay Land District – Wairoa District</i> 42.6539 hectares, more or less, being Lot 12 DP 8981. All computer freehold register HBC1/1280.
1893	207 Awamate Road, Wairoa	<i>Hawke's Bay Land District – Wairoa District</i> 26.4487 hectares, more or less, being Lot 3 DP 8981. All computer freehold register HBC1/1271.  16.4201 hectares, more or less, being Lot 4 DP 8981. All computer freehold register HBC1/1272.
1894	2603 Tiniroto Road, Tiniroto	<i>Gisborne Bay Land District – Wairoa District</i> 2.0235 hectares, more or less, being Parts Mangapoike 2A2. All computer freehold register 265799.  0.1315 hectares, more or less, being Part Managapoike 2A2. All computer freehold register 265795.
1895	2589 Tiniroto Road, Tiniroto	<i>Gisborne Land District – Wairoa District</i> 0.5746 hectares, more or less, being Sections 6 and 8 Mangapoike 2A2. All computer freehold register 270182.