

NGĀTI MARU

and

THE CROWN

**DEED OF SETTLEMENT SCHEDULE:
ATTACHMENTS**

Handwritten initials

ATTACHMENTS

TABLE OF CONTENTS

1	AREA OF INTEREST	1
2	DEED PLANS	2
3	TE WHAREKURA O MANAIA HOUSE SITE DIAGRAM	4
4	AOTEA RFR LAND	5
	AOTEA RFR LAND MAP	8
5	DRAFT SETTLEMENT BILL	9

2 18

ATTACHMENTS

1 AREA OF INTEREST

[To be inserted before the deed of settlement is signed]

7/13

ATTACHMENTS

2 DEED PLANS

Statutory areas

- Mercury Islands (OTS-403-339)
- Ngahue Reserve (OTS-403-333)

Overlay area

- Repanga (Cuvier) Island Nature Reserve (OTS-403-336)

Statutory area and deed of recognition

- Whangapoua conservation area (part Aotea Conservation Park) (OTS-403-340)

Cultural redress properties

- Ruahine property (OTS-403-341)
- Pohutukawa property (OTS-403-302)
- Muriwai site B (OTS-403-304)
- Muriwai site A (OTS-403-303)
- Okaharoa Ma Raki (OTS-403-306)
- Manaia property (OTS-403-320)
- Ohui ((OTS-403-308)
- Turaki Tohorā (OTS-403-309)
- Te Akau Wharekawa (OTS-403-321)
- Te Wharau (OTS-403-305)
- Tararu site A (OTS-403-331)
- Tararu Maunga (OTS-403-310)
- Dickson Park property (OTS-403-319)
- Kauaeranga River Mouth property (OTS-403-301)
- Danby Field property (OTS-403-335)
- Te Ipuomoehau (OTS-403-309)
- Te Whakairi (OTS-403-311)
- Pānehenehe (OTS-403-312)
- Motutapere (OTS-403-313)
- Kaitarakihi (OTS-403-314)
- Hikurangi (OTS-403-315)
- Ngapuketuruua (OTS-403-316)
- Puketaioko (OTS-403-332)
- Te Wharepoha ō Mahu (OTS-403-317)
- Maungakawa (OTS-403-318)
- Te Tihi o Hauturu (OTS-403-347)
- Pauanui Tihi (OTS-403-322)
- Pukehangi Maunga (OTS-403-324)
- Ngā Tukituki a Hikawera (OTS-403-325)
- Tangitū (OTS-403-326)
- Whakamoehau (OTS-403-323)
- Pukewhakataratara (OTS-403-327)



ATTACHMENTS

2: DEED PLANS

- Takaihuehue (OTS-403-328)
- Paewai (OTS-403-329)
- Tiroa (OTS-403-330)
- Orongo property (OTS-403-338)
- Kauaereanga site A (OTS-403-344)
- Kauaeranga site B (OTS-403-344)
- Omahu (OTS-403-345)

Vest and vest back site

- Repanga (Cuvier) Island Nature Reserve (OTS-403-343)

3 VB

Statutory Acknowledgement



Mercury Islands (Iles d'Haussez)

OTS-403-339

North Auckland Land District
 Territorial Authority: Thames-Coromandel District
 Compiled as a graphic representation.
 Boundaries are indicative only.

Mercury Islands

Areas referred to in the deed of settlement between
 Ngāti Maru and the Crown

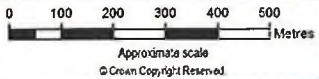
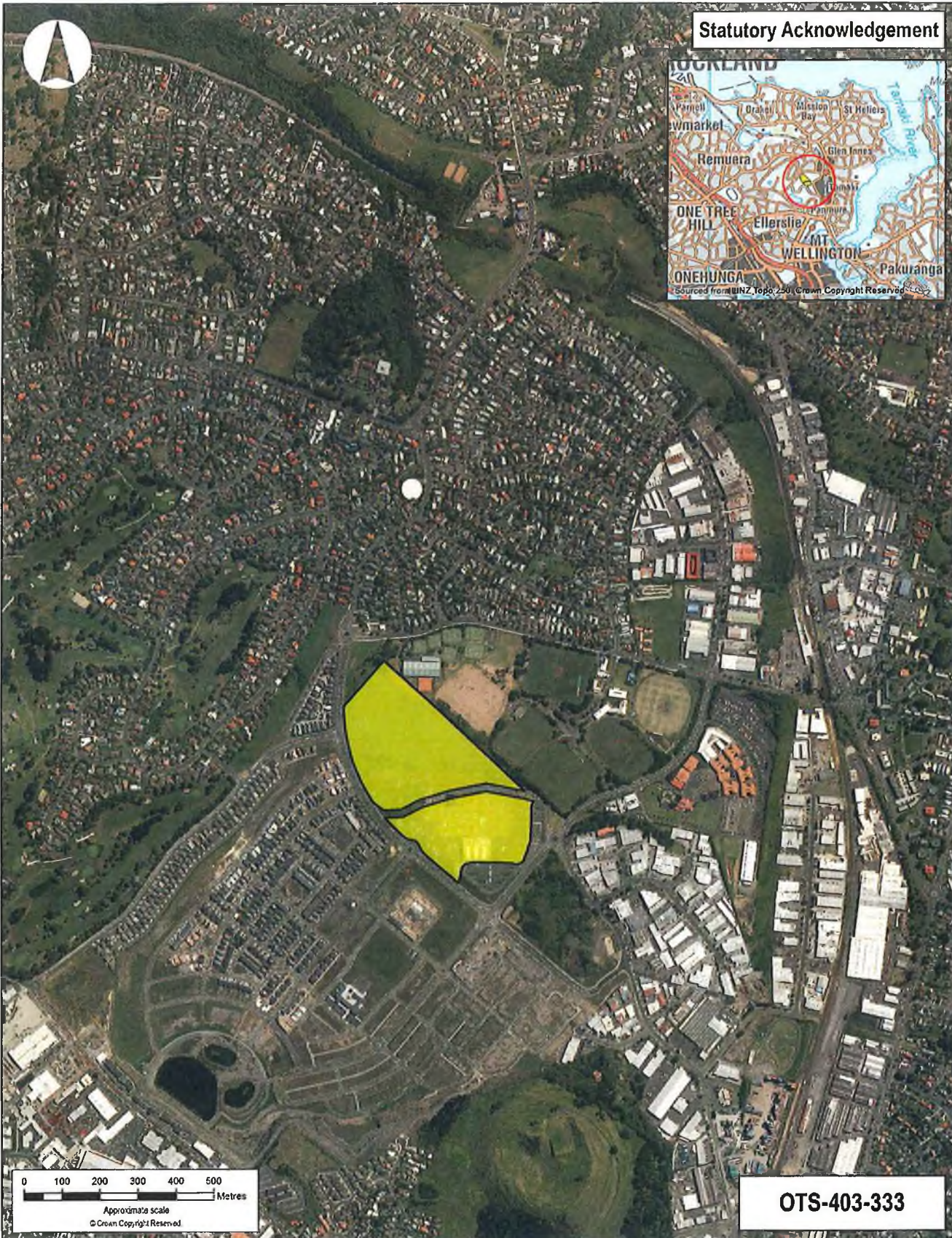
Approved as to boundaries:

.....
 for Ngāti Maru

.....
 for and on behalf of the Crown

Handwritten initials: M and RB

Statutory Acknowledgement



OTS-403-333

North Auckland Land District
Territorial Authority: Auckland Council
Compiled as a graphic representation
Boundaries are indicative only.



Ngahue Reserve

Areas referred to in the deed of settlement between
Ngāti Maru and the Crown

Approved as to boundaries:
.....
for Ngāti Maru
.....
for and on behalf of the Crown

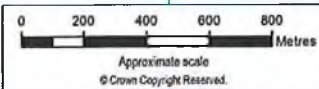
Handwritten initials or signature.



Overlay Classification



**Cuvier Island
(Repanga Island)**



OTS-403-336

North Auckland Land District
Territorial Authority: Thames-Coromandel District
Compiled as a graphic representation.
Boundaries are indicative only.



Repanga (Cuvier) Island Nature Reserve

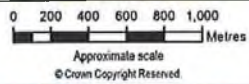
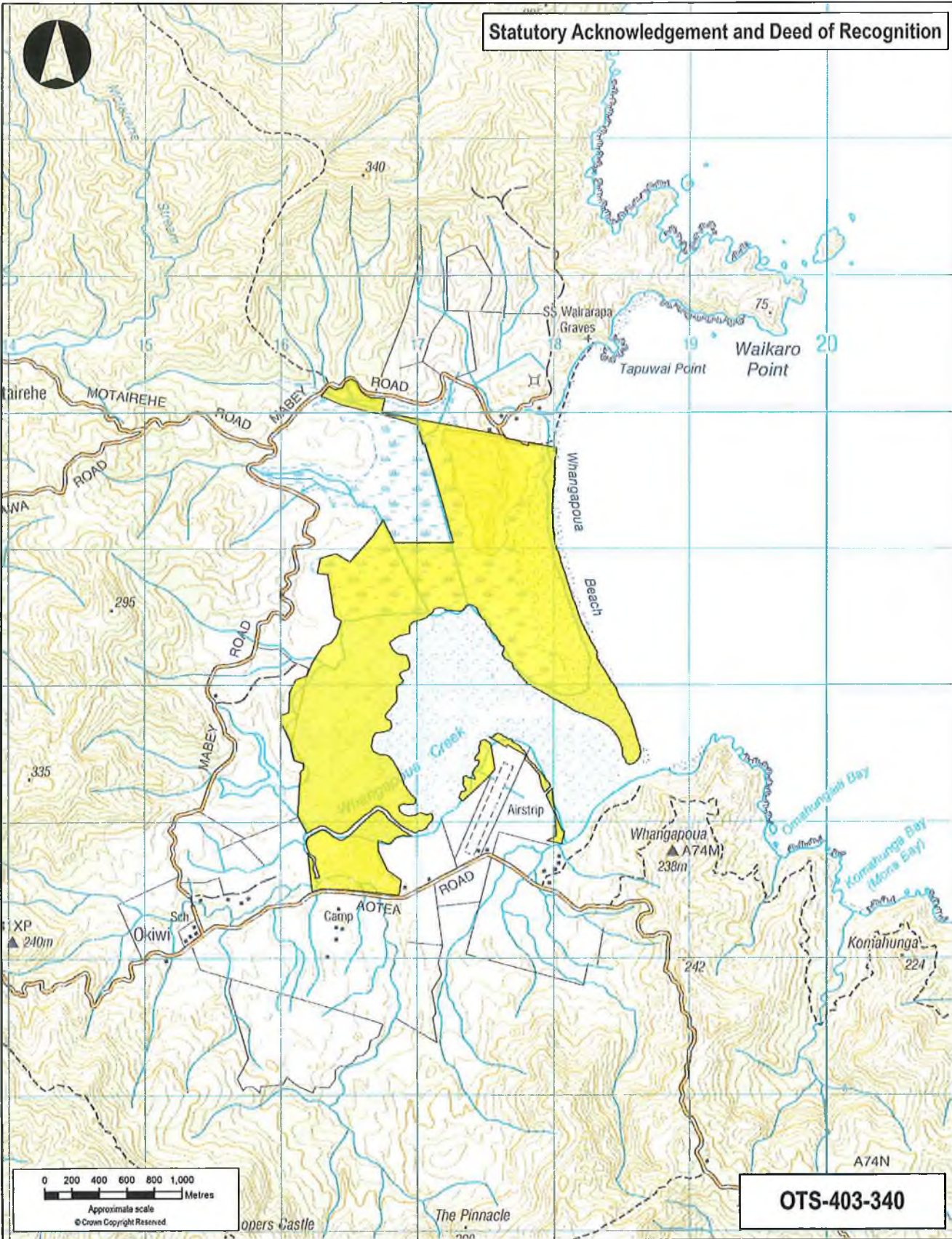
**Areas referred to in the deed of settlement between
Ngāti Maru and the Crown**

Approved as to boundaries:

for Ngāti Maru

for and on behalf of the Crown

Statutory Acknowledgement and Deed of Recognition



OTS-403-340

North Auckland Land District
 Territorial Authority: Auckland Council
 Compiled as a graphic representation.
 Boundaries are indicative only.



**Whangapoua conservation area
 (part Aotea Conservation Park)**

**Areas referred to in the deed of settlement between
 Ngāti Maru and the Crown**

Approved as to boundaries:

 for Ngāti Maru

 for and on behalf of the Crown

Handwritten signatures and marks at the bottom left of the page.



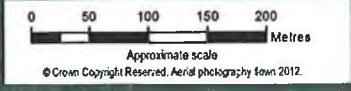
Vest Fee Simple



Sourced from LINZ Topo 250. Crown Copyright Reserved



26.5785 hectares, more or less, being Section 1 SO 507014 (formerly being part of Allotment 247 Aotea Parish and Crown land (SO 44247)).



OTS-403-341

North Auckland Land District
Territorial Authority: Auckland Council
Compiled as a graphic representation
Boundaries are indicative only.



OFFICE OF TREATY SETTLEMENTS
DEPARTMENT OF THE MINISTER OF JUSTICE

Ruahine property

Areas referred to in the deed of settlement between
Ngāti Maru and the Crown

Approved as to boundaries:

.....
for Ngāti Maru

.....
for and on behalf of the Crown

Handwritten signatures and scribbles at the bottom left of the page.

Vest Fee Simple

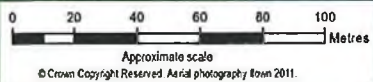


Lot 17
DP 19224

Lot 18
DP 19224

0.82 hectares, approximately, being Part Lots 17 and 18 DP 19224. Subject to survey.

OTS-403-302



North Auckland Land District
Territorial Authority: Auckland Council
Compiled as a graphic representation.
Boundaries are indicative only.



Pohutukawa property

Areas referred to in the deed of settlement between
Ngāti Maru and the Crown

Approved as to boundaries:

for Ngāti Maru

for and on behalf of the Crown

Handwritten initials and a number '3' at the bottom left of the page.



Vest Fee Simple




- - - Right of way easement to be created
- - - Right to convey and store water easement to be created



106.0 hectares, approximately, being parts of Sections 37, 38 and 39 Block I Colville Survey District. Subject to survey.

OTS-403-304

<p>South Auckland Land District Territorial Authority: Thames Coromandel District Compiled as a graphic representation Boundaries are indicative only.</p> 	<p>Muriwai site B</p> <p>Areas referred to in the deed of settlement between Ngāti Maru and the Crown</p>	<p>Approved as to boundaries:</p> <p>..... for Ngāti Maru</p> <p>..... for and on behalf of the Crown</p>
--	--	---

318



Vest Fee Simple



--- Right to convey water easement to be created

5.6 hectares, approximately, being part of Section 38 Block I Colville Survey District. Subject to survey.

OTS-403-303

South Auckland Land District
Territorial Authority: Thames-Coromandel District
Compiled as a graphic representation.
Boundaries are indicative only.



OFFICE OF TREATY SETTLEMENTS
DEPARTMENT OF THE ATTORNEY GENERAL

Muriwai site A

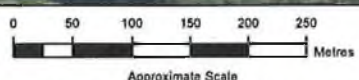
Areas referred to in the deed of settlement between
Ngāti Maru and the Crown

Approved as to boundaries:
.....
for Ngāti Maru

.....
for and on behalf of the Crown



--- Right of way easement to be created



Approximate Scale
© Crown Copyright Reserved. Aerial photography from 2012.

30.3 hectares, approximately, being parts of Sections 25 and 26 Block II Colville Survey District and parts Legal Road to be stopped. Subject to survey.

OTS-403-306

South Auckland Land District
Territorial Authority, Thames-Coromandel District
Compiled as a graphic representation
Boundaries are indicative only.



OFFICE OF TREATY SETTLEMENTS
PART OF THE DEPARTMENT OF JUSTICE

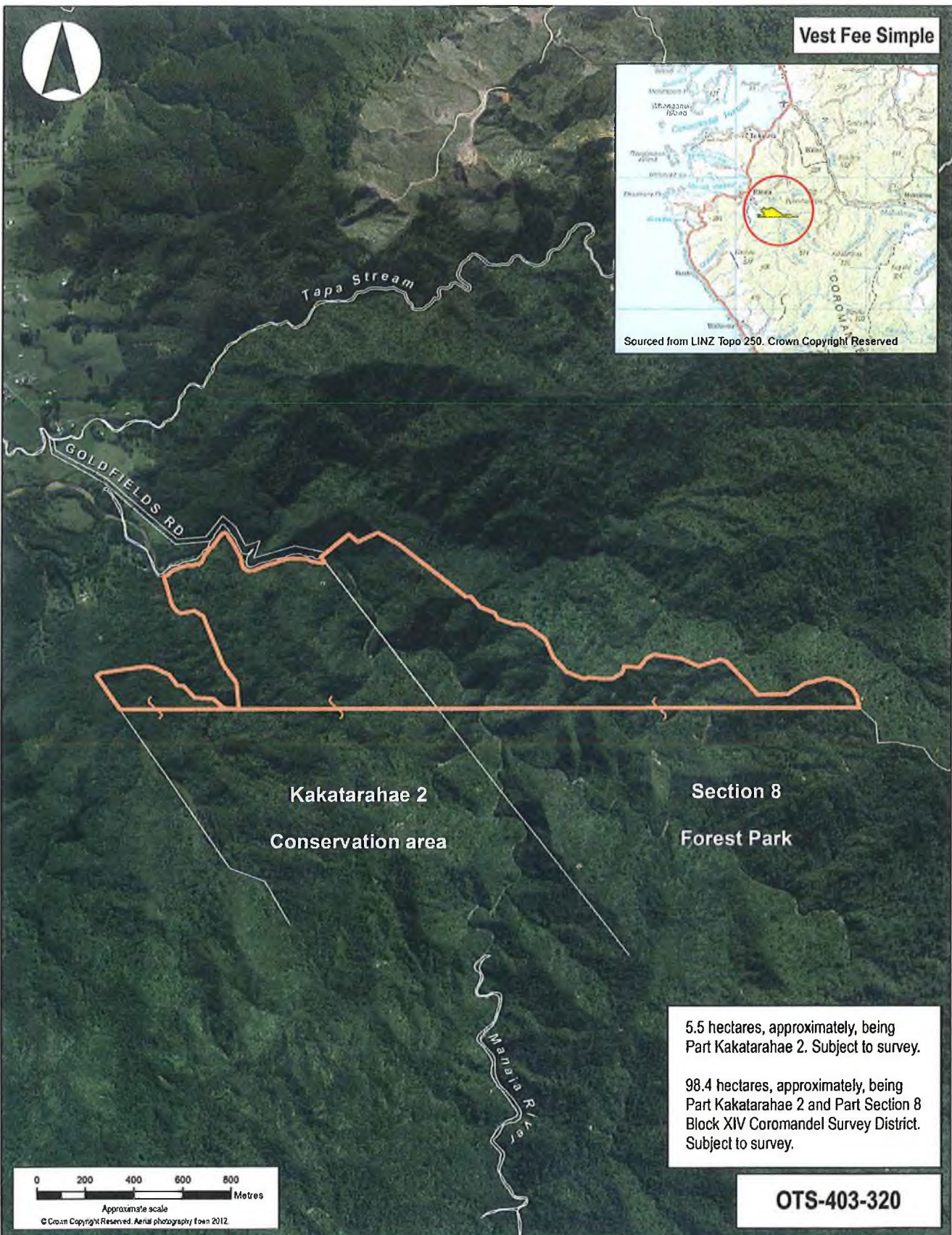
Okaharoa Ma Raki

Areas referred to in the deed of settlement between
Ngāti Maru and the Crown

Approved as to boundaries:
for Ngāti Maru
for and on behalf of the Crown

Handwritten signature

Vest Fee Simple



5.5 hectares, approximately, being Part Kakatarahae 2. Subject to survey.

98.4 hectares, approximately, being Part Kakatarahae 2 and Part Section 8 Block XIV Coromandel Survey District. Subject to survey.

OTS-403-320

South Auckland Land District
Territorial Authority: Thames-Coromandel District
Compiled as a graphic representation.
Boundaries are indicative only.



Manaia property

Areas referred to in the deed of settlement between Ngāti Maru and the Crown

Approved as to boundaries:

.....
for Ngāti Maru

.....
for end on behalf of the Crown

Vest Fee Simple



175.9620 hectares, more or less, being Section 4 SO 499577 (formerly being Part Tairua Block and Part Wharekawa East 2).

OTS-403-308

South Auckland Land District
Territorial Authority: Thames-Coromandel District
Compiled as a graphic representation.
Boundaries are indicative only.



Ohui

Areas referred to in the deed of settlement between
Ngāti Maru and the Crown

Approved as to boundaries:

for Ngāti Maru

for and on behalf of the Crown

Handwritten signature or initials.



Vest Fee Simple

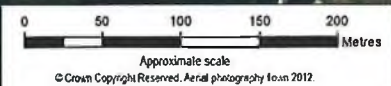


Ohai Stream

Section 8
SO 43185

Recreation reserve

5.1 hectares, approximately, being
Part Section 8 SO 43285. Subject to Survey.



OTS-403-307

South Auckland Land District
Territorial Authority: Thames-Coromandel District
Compiled as a graphic representation.
Boundaries are indicative only.



Turaki Tohorā

Areas referred to in the deed of settlement between
Ngāti Maru and the Crown

Approved as to boundaries:

for Ngāti Maru

for and on behalf of the Crown

Vest Fee Simple

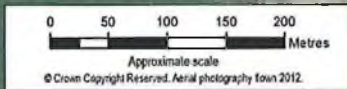


Part Wharekawa East 2 Block

Wharekawa Harbour

5 hectares, approximately, being Part Wharekawa East 2 Block. Subject to survey.

OTS-403-321



South Auckland Land District
Territorial Authority: Thames-Coromandel District
Compiled as a graphic representation.
Boundaries are indicative only.



Te Akau Wharekawa

Areas referred to in the deed of settlement between
Ngāti Maru and the Crown

Approved as to boundaries:

for Ngāti Maru

for and on behalf of the Crown

Vest Fee Simple

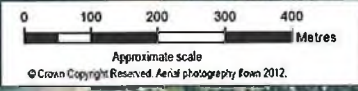


8.9280 hectares, more or less, being Section 38 Block XIV Hastings Survey District.

20.0900 hectares, more or less, being Lot 1 DPS 21543.

13.7921 hectares, more or less, being Lot 1 DP 28224.

1.0762 hectares, more or less, being Lot 2 DPS 14071.



OTS-403-305

South Auckland Land District
Territorial Authority: Thames-Coromandel District
Compiled as a graphic representation.
Boundaries are indicative only.

OFFICE OF TREATY SETTLEMENTS
PART OF THE MINISTRY OF JUSTICE

Te Wharau

**Areas referred to in the deed of settlement between
Ngāti Maru and the Crown**

Approved as to boundaries:

..... for Ngāti Maru

..... for end on behalf of the Crown

3



Pt Ipuomoehau 2

Sec 91
Blk IV
Thames SD



Pt Opitomoko

Pukehinau (Shellback) Stream

Pt Pukehinau

Pt Kuranui

Pt Pukehinau excluded

Sec 1 Blk IV
Thames SD
excluded

Lot 1
DPS 27365
excluded

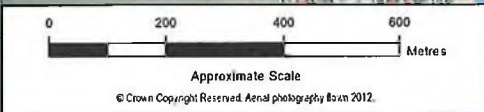
Sec 92
Blk IV
Thames SD

8.30 hectares, approximately, being Part Te Ipuomoehau No 2. Subject to survey.

30.44 hectares, approximately, being Part Sections 91 and 92 Block IV Thames Survey District. Subject to survey.

87.53 hectares, approximately, being Part Kuranui and Part Opitomoko. Subject to survey.

24.25 hectares, approximately, being Part Pukehinau. Subject to survey.



© Crown Copyright Reserved. Aerial photography from 2012.

OTS-403-331

South Auckland Land District
Territorial Authority: Thames-Coromandel District
Compiled as a graphic representation
Boundaries are indicative only.



Tararu site A

Areas referred to in the deed of settlement between
Ngāti Maru and the Crown

Approved as to boundaries:

.....
for Ngāti Maru
.....
for and on behalf of the Crown



Vest Fee Simple



Sourced from LINZ Topo 250 - Crown Copyright Reserved

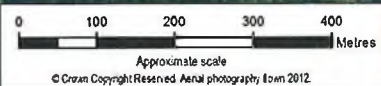
Forest Park

Section 3

Section 2

640m contour

10.4 hectares, approximately, being Part Sections 2 and 3 Block II Thames Survey District. Subject to survey



OTS-403-310

South Auckland Land District
Territorial Authority: Thames-Coromandel District

Tararu maunga

Approved as to boundaries:

Completed as a graphic representation.
Boundaries are indicative only.



**Areas referred to in the deed of settlement between
Ngāti Maru and the Crown**

.....
for Ngāti Maru

.....
for and on behalf of the Crown

Handwritten signature or initials



Vest Fee Simple



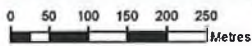
Lot 2
DP 372272

Tararu

28.3900 hectares, more or less, being
Lot 2 DP 372272.

OTS-403-319

--- Right of way easement to be created



Approximate scale
© Crown Copyright Resen ed. Aerial photography from 2012

South Auckland Land District
Territorial Authority: Thames-Coromandel District

Compiled as a graphic representation.
Boundaries are indicative only.



STATE OF THE MINISTRY OF 108/108

Dickson Park property

Areas referred to in the deed of settlement between
Ngāti Maru and the Crown

Approved as to boundaries:

.....
for Ngāti Maru

.....
for and on behalf of the Crown

Vest Fee Simple



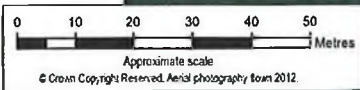
Kauaeranga River

Section 1
SO 472745

Section 2
SO 472745

0.3880 hectares, more or less, being Sections 1 and 2 SO 472745.

OTS-403-301



South Auckland Land District
 Territorial Authority: Thames-Coromandel District
 Compiled as a graphic representation
 Boundaries are indicative only.



Kauaeranga River Mouth property

Areas referred to in the deed of settlement between
Ngāti Maru and the Crown

Approved as to boundaries:

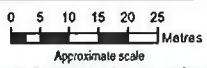
 for Ngāti Maru

 for and on behalf of the Crown

Vest Fee Simple



- - - Right of way easement to be created
- Right to drain water easement to be created



© Crown Copyright Reserved. Aerial photography from 2012.

0.2168 hectares, more or less, being Section 1 SO 511663 (formerly being Part Hangaruru B, Part Whakaharatau B No.A, Part Nokenoke B No.A, and Part Nokenoke B No.B).

OTS-403-335

South Auckland Land District
Territorial Authority: Thames-Coromandel District
Compiled as a graphic representation.
Boundaries are indicative only.



Danby Field property

**Areas referred to in the deed of settlement between
Ngāti Maru and the Crown**

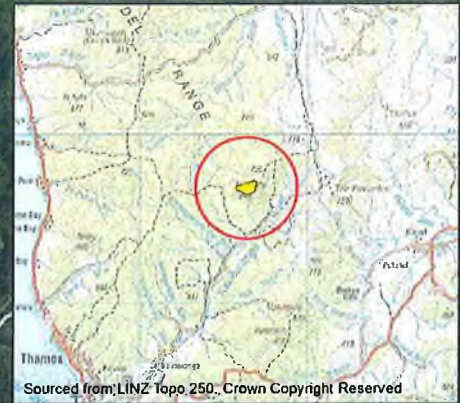
Approved as to boundaries:

.....
for Ngāti Maru

.....
for and on behalf of the Crown

Handwritten initials: 7 VB

Vest Fee Simple

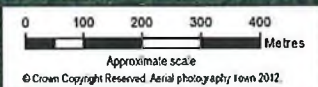


Part Waiwhakaurunga Block

Forest Park

66.3 hectares, approximately, being Part Waiwhakaurunga Block. Subject to Survey.

OTS-403-311



South Auckland Land District
Territorial Authority: Thames-Coromandel District
Compiled as a graphic representation
Boundaries are indicative only.



Te Whakairi

Areas referred to in the deed of settlement between
Ngāti Maru and the Crown

Approved as to boundaries:

for Ngāti Maru

for and on behalf of the Crown



Vest Fee Simple

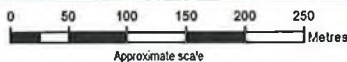


Crown Land

Forest Park

Hihi Stream

10.5 hectares, approximately, being Crown Land (SO 7122). Subject to survey



Approximate scale
© Crown Copyright Reserved Aerial photography taken 2012.

OTS-403-312

South Auckland Land District
Territorial Authority: Thames-Coromandel District

Compiled as a graphic representation.
Boundaries are indicative only.



OFFICE OF THE MINISTER OF JUSTICE

Pānehenehe

Areas referred to in the deed of settlement between
Ngāti Maru and the Crown

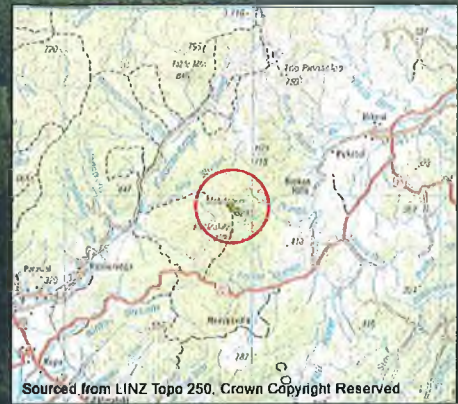
Approved as to boundaries:

for Ngāti Maru

for and on behalf of the Crown



Vest Fee Simple



Sourced from LINZ Topo 250, Crown Copyright Reserved



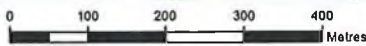
760m contour

Part Hihi & Piraunui Block

Forest Park

----- Right of way easement to be created

12.3 hectares, approximately, being Part Hihi and Piraunui Block. Subject to survey.



Approximate scale
© Crown Copyright Reserved, Aerial photography from 2012.

OTS-403-313

South Auckland Land District
Territorial Authority: Thames-Coromandel District
Compiled as a graphic representation.
Boundaries are indicative only.



Motutapere

Areas referred to in the deed of settlement between
Ngāti Maru and the Crown

Approved as to boundaries:

for Ngāti Maru

for and on behalf of the Crown



Vest Fee Simple



Sourced from LINZ Topo 250. Crown Copyright Reserved

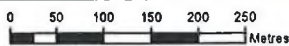
Part Hihi & Piraunui Block

760m contour

Part Taparahi 1

Forest Park

----- Right of way easement to be created



Approximate scale

© Crown Copyright Reserved. Aerial photography from 2012.

8.834 hectares, approximately, being Part Hihi and Piraunui Block and Part Taparahi No 1. Subject to survey.

OTS-403-314

South Auckland Land District
Territorial Authority: Thames-Coromandel District

Computed as a graphic representation.
Boundaries are indicative only.



PART OF THE MINISTRY OF JUSTICE

Kaitarakihi

**Areas referred to in the deed of settlement between
Ngāti Maru and the Crown**

Approved as to boundaries:

.....
for Ngāti Maru

.....
for and on behalf of the Crown



Vest Fee Simple



Forest Park

Lot 2 Section 3

600m contour

Section 5

14.7 hectares, approximately, being Part Section 5 Block II Ohinemuri Survey District [and Part Lot 2 Section 3 Block II Ohinemuri Survey District]. Subject to survey.

0 50 100 150 200 250 Metres

Approximate scale

© Crown Copyright Reserved. Aerial photography from 2012.

OTS-403-315

South Auckland Land District
Territorial Authority: Thames-Coromandel District

Compiled as a graphic representation.
Boundaries are indicative only.



DEPT OF THE MINISTRY OF JUSTICE

Hikurangi

Areas referred to in the deed of settlement between
Ngāti Maru and the Crown

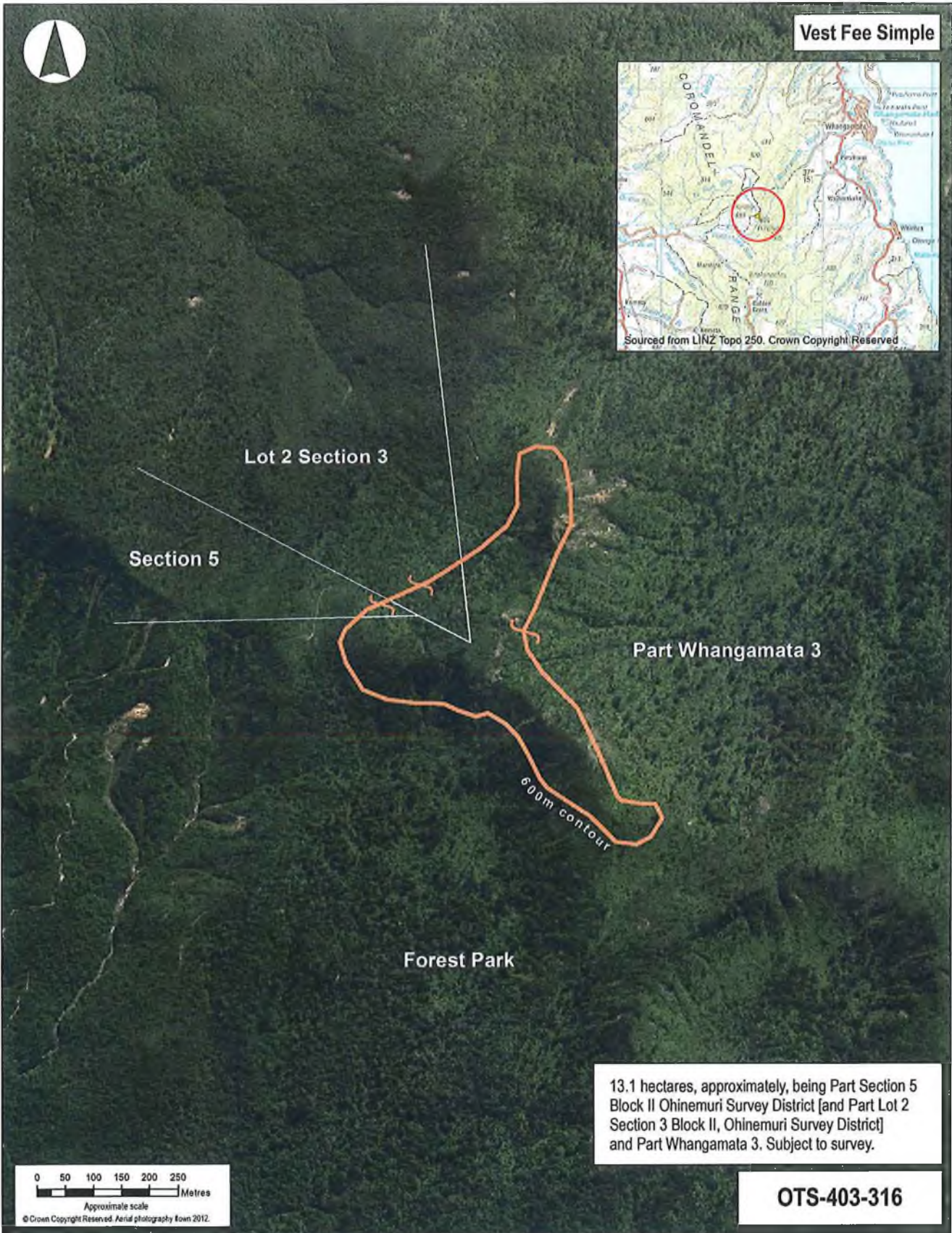
Approved as to boundaries:

.....
for Ngāti Maru

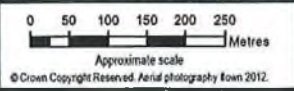
.....
for and on behalf of the Crown



Vest Fee Simple



13.1 hectares, approximately, being Part Section 5 Block II Ohinemuri Survey District [and Part Lot 2 Section 3 Block II, Ohinemuri Survey District] and Part Whangamata 3. Subject to survey.



OTS-403-316

South Auckland Land District
Territorial Authority: Thames-Coromandel District
and Hauraki District
Compiled as a graphic representation.
Boundaries are indicative only.



OFFICE OF TREATY SETTLEMENTS
PART OF THE MINISTRY OF JUSTICE

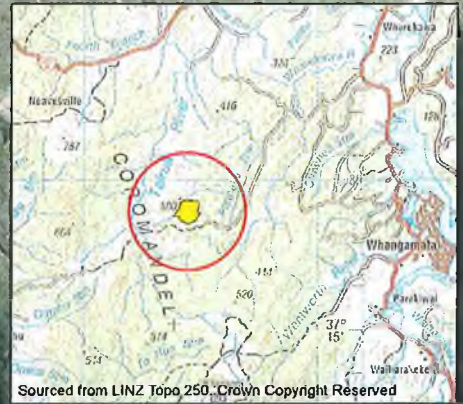
Ngapuketuru

Areas referred to in the deed of settlement between
Ngāti Maru and the Crown

Approved as to boundaries:
.....
for Ngāti Maru
.....
for and on behalf of the Crown



Vest Fee Simple

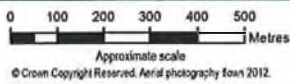


Sourced from LINZ Topo 250, Crown Copyright Reserved

Part Omahu Block



67.5 hectares, approximately, being Part Omahu Block. Subject to survey.



OTS-403-332

South Auckland Land District
Territorial Authority: Thames-Coromandel District
Compiled as a graphic representation.
Boundaries are indicative only.



PART OF THE MINISTRY OF JUSTICE

Puketaioko

**Areas referred to in the deed of settlement between
Ngāti Maru and the Crown**

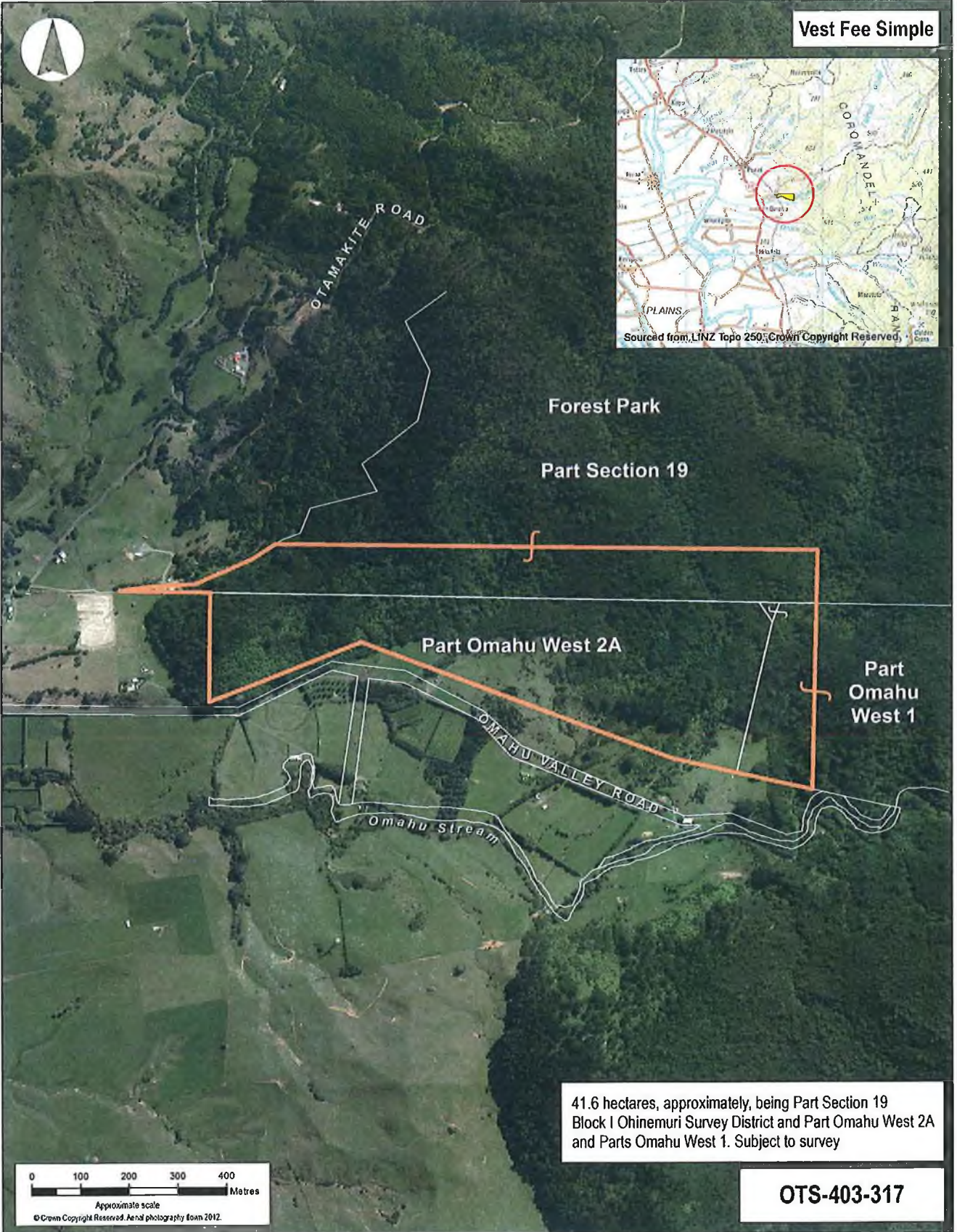
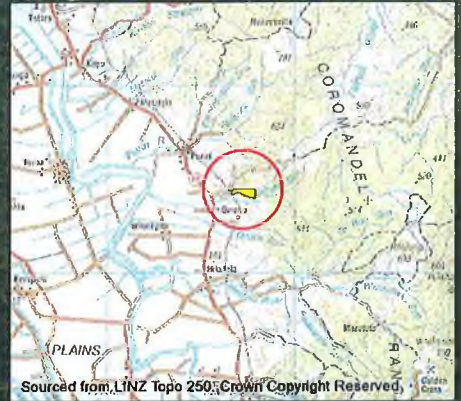
Approved as to boundaries:

for Ngāti Maru *[Signature]*

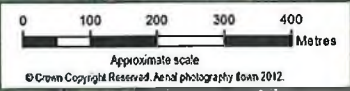
for and on behalf of the Crown *[Signature]*

[Handwritten signature]

Vest Fee Simple



41.6 hectares, approximately, being Part Section 19 Block I Ohinemuri Survey District and Part Omahu West 2A and Parts Omahu West 1. Subject to survey



OTS-403-317

South Auckland Land District
Territorial Authority: Thames-Coromandel District
Compiled as a graphic representation
Boundaries are indicative only.



Office of Treaty Settlements
Te Kaitiaki Take Kōwhiri
101-103, The Quadrant, Auckland
www.otz.govt.nz

DEPT OF THE MINISTER OF JUSTICE

Te Wharepoha o Mahu

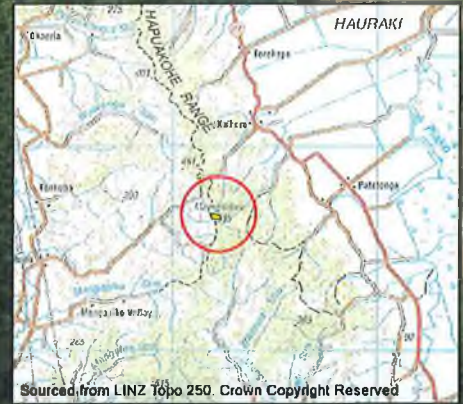
Areas referred to in the deed of settlement between
Ngāti Maru and the Crown

Approved as to boundaries:

.....
for Ngāti Maru

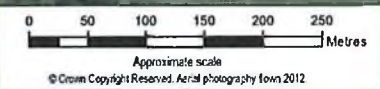
.....
for and on behalf of the Crown

Vest Fee Simple



Section 9
Scenic reserve

--- Right of way easement to be created



10.2 hectares, approximately, being Part Section 9 Block XVI Piako Survey District. Subject to survey.

OTS-403-318

South Auckland Land District
Territorial Authority: Hauraki District
Compiled as a graphic representation.
Boundaries are indicative only.



Maungakawa

Areas referred to in the deed of settlement between
Ngāti Maru and the Crown

Approved as to boundaries:

.....
for Ngāti Maru

.....
for and on behalf of the Crown

Handwritten signature or initials.



Vest Fee Simple



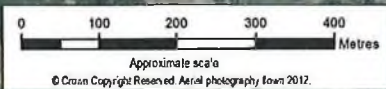
Sourced from LINZ Topo 250. Crown Copyright Reserved.



Coromandel Forest Park

Section 1

10.0000 hectares, more or less, being Section 1 SO 497491.



OTS-403-347

South Auckland Land District
Territorial Authority: Thames-Coromandel District
Compiled as a graphic representation.
Boundaries are indicative only.



Te Tihi o Hauturu

Areas referred to in the deed of settlement between
Ngāti Maru and the Crown

Approved as to boundaries:

for Ngāti Maru

for and on behalf of the Crown

Vest Fee Simple



10,000 hectares, more or less, being Section 1 SO 499577 (formerly being Part Tairua Block)

OTS-403-322

South Auckland Land District
Territorial Authority: Thames-Coromandel District
Compiled as a graphic representation
Boundaries are indicative only.



Pauanui Tihi

Areas referred to in the deed of settlement between
Ngāti Maru and the Crown

Approved as to boundaries:

.....
for Ngāti Maru

.....
for and on behalf of the Crown

Vest Fee Simple



14.3 hectares, approximately, being Part Whangamata 3. Subject to survey.

OTS-403-324

South Auckland Land District
Territorial Authority: Hauraki District
Compiled as a graphic representation.
Boundaries are indicative only.

Pukehangi Maunga

Areas referred to in the deed of settlement between
Ngāti Maru and the Crown

Approved as to boundaries:
.....
for Ngāti Maru
.....
for and on behalf of the Crown



Vest Fee Simple



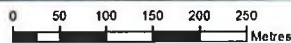
Sourced from LINZ Topo 250, Crown Copyright Reserved



Crown Land
SO 48402

Kaimai Mamaku Conservation Park

8.7 hectares, approximately, being Part Crown Land (SO 48402). Subject to survey



Approximate scale

© Crown Copyright Reserved. Aerial photography from 2012.

OTS-403-325

South Auckland Land District
Territorial Authority: Western Bay of Plenty District.

Compiled as a graphic representation.
Boundaries are indicative only.



PART OF THE MINISTRY OF JUSTICE

Ngā Tukituki a Hikawera

Areas referred to in the deed of settlement between
Ngāti Maru and the Crown

Approved as to boundaries:

.....
for Ngāti Maru

.....
for and on behalf of the Crown



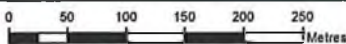
Vest Fee Simple



Crown Land
SO 48402

Kaimai Mamaku Conservation Park

--- Right of Way Easement to be created



Approximate scale

© Crown Copyright Reserved. Aerial photography from 2012.

7.5 hectares, approximately, being Part Crown Land (SO 48402). Subject to survey.

OTS-403-326

South Auckland Land District
Territorial Authority: Western Bay of Plenty and
Matamata-Piako District.
Compiled as a graphic representation.
Boundaries are indicative only.



OFFICE OF TREATY SETTLEMENTS
PART OF THE MINISTRY OF JUSTICE

Tangitū

Areas referred to in the deed of settlement between
Ngāti Maru and the Crown

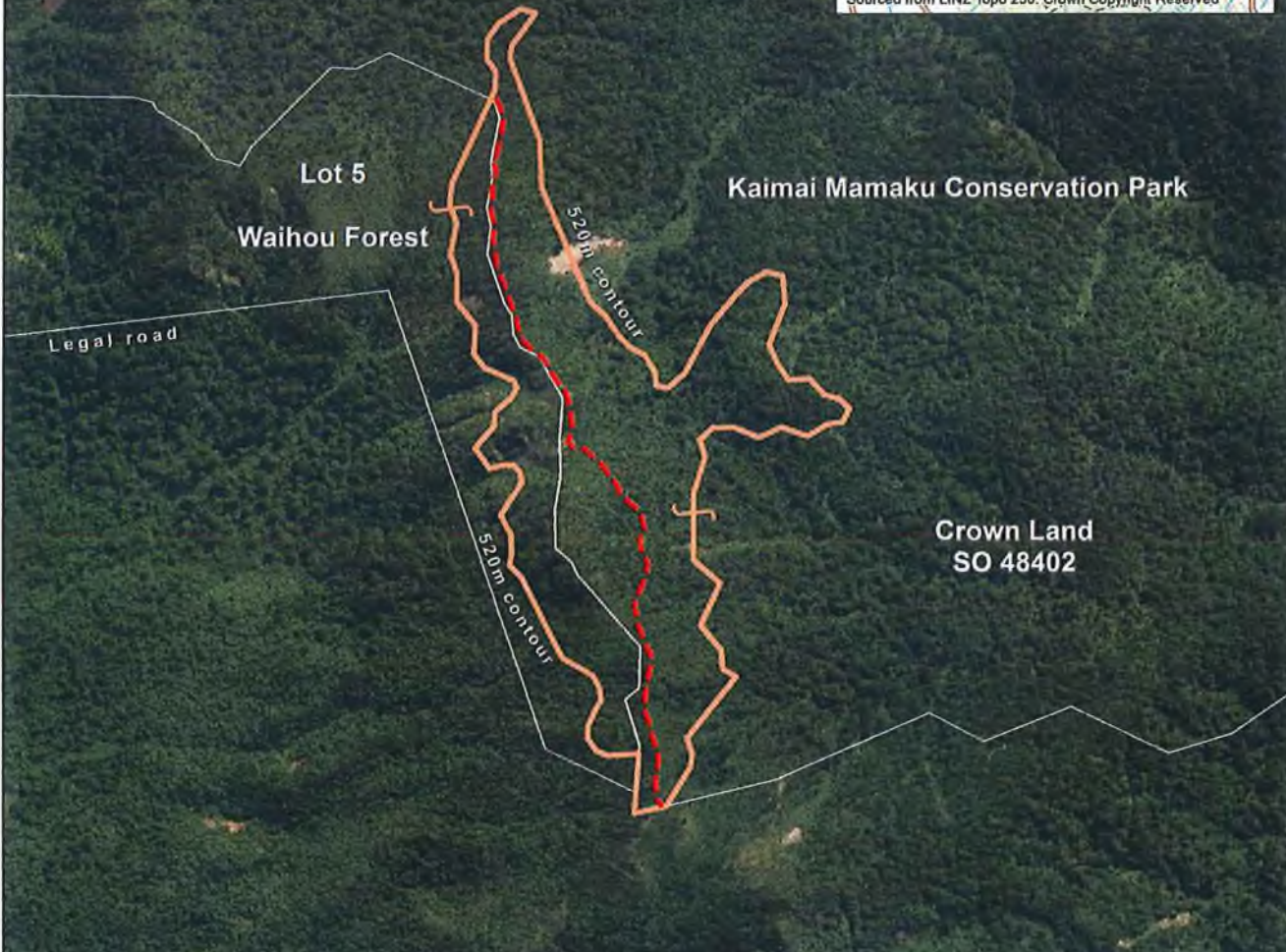
Approved as to boundaries:

for Ngāti Maru

for and on behalf of the Crown

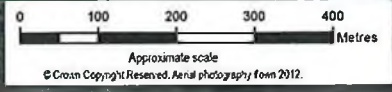


Vest Fee Simple



6.0 hectares, approximately, being Part Lot 5 DP25781. Subject to Survey.
14.0 hectares, approximately, being Part Crown Land (SO 48402). Subject to survey.

--- Right of Way Easement to be created



OTS-403-327

South Auckland Land District
Territorial Authority: Western Bay of Plenty and
Matamala-Piako Districts.
Compiled as a graphic representation.
Boundaries are indicative only.



OFFICE OF THE MINISTER OF JUSTICE

Pukewhakarātara

Areas referred to in the deed of settlement between
Ngāti Maru and the Crown

Approved as to boundaries:

.....
for Ngāti Maru

.....
for and on behalf of the Crown

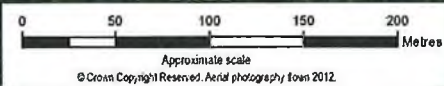


Vest Fee Simple



Crown Land
Conservation Park

2.9 hectares, approximately, being Part Crown Land (SO 48402). Subject to survey.



OTS-403-328

South Auckland Land District
Territorial Authority: Western Bay of Plenty District.

Takaihuehue

Approved as to boundaries:

Compiled as a graphic representation.
Boundaries are indicative only.



Areas referred to in the deed of settlement between
Ngāti Maru and the Crown

for Ngāti Maru

for and on behalf of the Crown



Vest Fee Simple

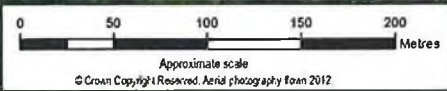


Sourced from LINZ Topo 250. Crown Copyright Reserved

Part Section 8
Conservation Park



2.0 hectares, approximately, being Part Section 8,
Block IV Aongatete Survey District. Subject to survey.



OTS-403-329

South Auckland Land District
Territorial Authority: Western Bay of Plenty District.

Paewai

Approved as to boundaries:

Compiled as a graphic representation.
Boundaries are indicative only.



Areas referred to in the deed of settlement between
Ngāti Maru and the Crown

.....
for Ngāti Maru

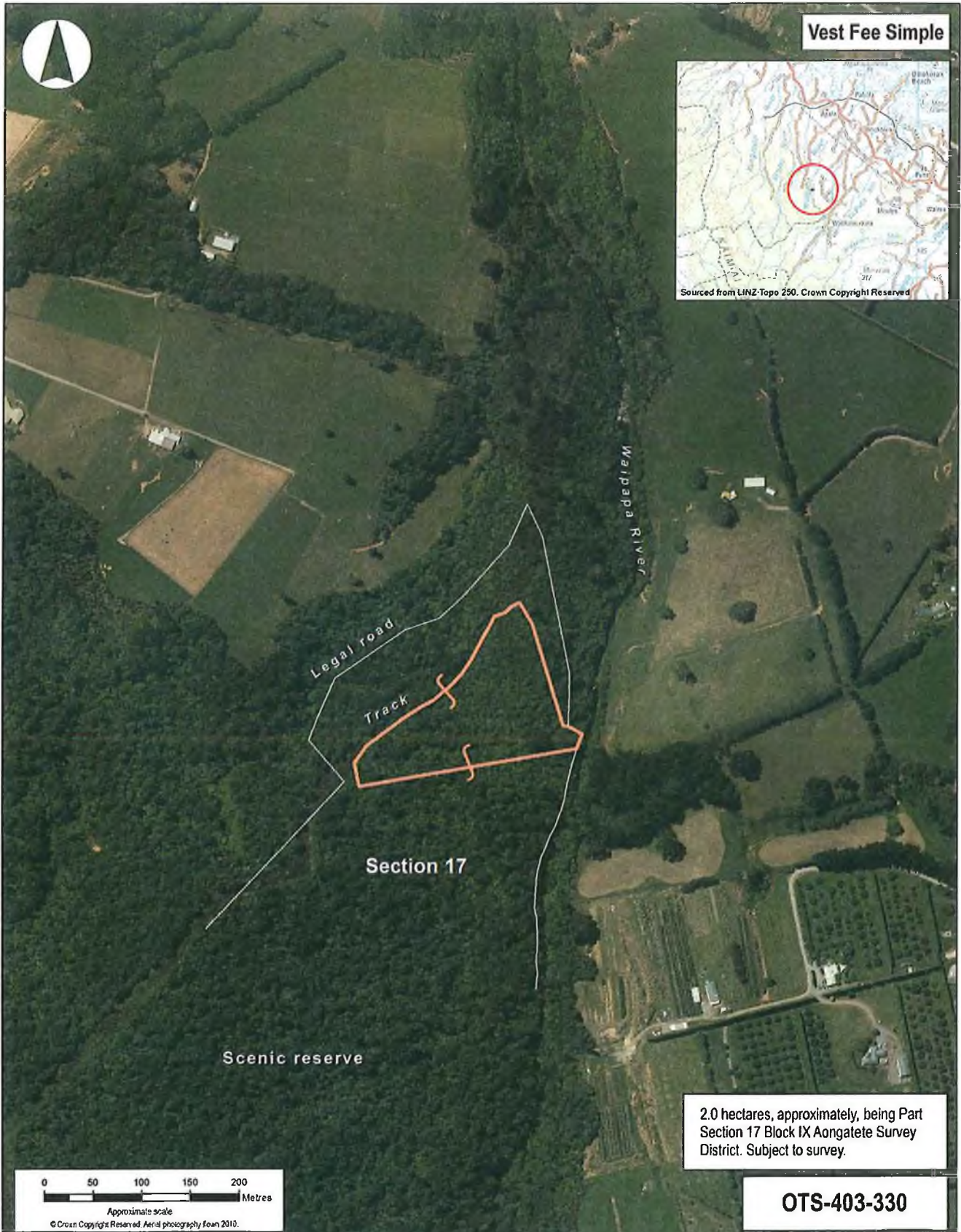
.....
for and on behalf of the Crown



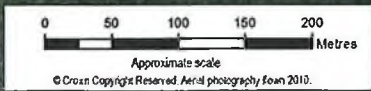
Vest Fee Simple



Sourced from LINZ-Topo 250. Crown Copyright Reserved



2.0 hectares, approximately, being Part Section 17 Block IX Aongatete Survey District. Subject to survey.



OTS-403-330

South Auckland Land District
Territorial Authority: Western Bay of Plenty District
Compiled as a graphic representation.
Boundaries are indicative only.



Tiroa

**Areas referred to in the deed of settlement between
Ngāti Maru and the Crown**

Approved as to boundaries:

for Ngāti Maru

for and on behalf of the Crown

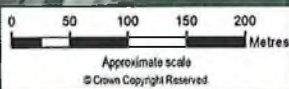


Vest Fee Simple



Part Section 4 Block VII

1.3 hectares, approximately, being Part Section 4 Block VII Thames Survey District.



OTS-403-338

South Auckland Land District
Territorial Authority: Hauraki District Council

Compiled as a graphic representation
Boundaries are indicative only.



PART OF THE MINISTRY OF JUSTICE

Orongo property

**Areas referred to in the deed of settlement between
Ngāti Maru and the Crown**

Approved as to boundaries:

.....
for Ngāti Maru

.....
for and on behalf of the Crown

Handwritten signature/initials

Vest Fee Simple



Sourced from LINZ Topo 250. Crown Copyright Reserved

Section 6
Block VI

Site B

Section 5
Block VI

Part Section 15
Block VI

Section 5
Block VI

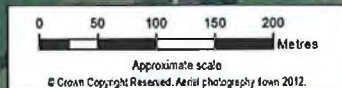
Site A

Section 5
SO 59466

Kauaeranga River

Kauaeranga site A
1.75 hectares, approximately, being Part Section 5 Block VI Thames Survey District and Part Section 5 SO 59466. Subject to survey.

Kauaeranga site B
18.3 hectares, approximately, being Part Sections 5, 6, and 15 Block VI Thames Survey District. Subject to survey.



OTS-403-344

South Auckland Land District
Territorial Authority: Thames-Coromandel District
Compiled as a graphic representation
Boundaries are indicative only.



Kauaeranga site A and Kauaeranga site B

Areas referred to in the deed of settlement between
Ngāti Maru and the Crown

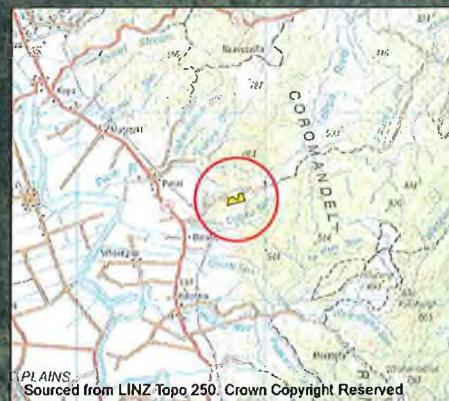
Approved as to boundaries:

for Ngāti Maru

for and on behalf of the Crown

Handwritten signatures or initials at the bottom of the page.

Vest Fee Simple



Sourced from LINZ Topo 250. Crown Copyright Reserved

Section 19
Block I Ohinemuri
Survey District

OTAMAKITE ROAD

Part Horete 1A

Forest Park

29.2 hectares, approximately, being Parts
Section 19 Block I Ohinemuri Survey District
and Part Horete 1A. Subject to survey.

0 50 100 150 200 250
Metres

Approximate scale

© Crown Copyright Reserved. Aerial photography from 2012.

OTS-403-345

South Auckland Land District
Territorial Authority: Thames-Coromandel District
Compiled as a graphic representation.
Boundaries are indicative only.



DEPT OF THE MINISTRY OF JUSTICE

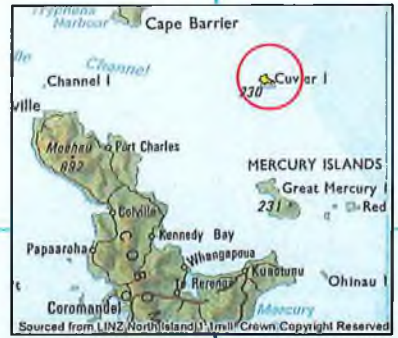
Omahu

Areas referred to in the deed of settlement between
Ngāti Maru and the Crown

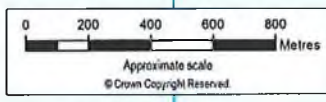
Approved as to boundaries:

for Ngāti Maru

for and on behalf of the Crown



Cuvier Island (Repanga Island)



OTS-403-343

North Auckland Land District
Territorial Authority: Thames-Coromandel District
Compiled as a graphic representation.
Boundaries are indicative only.



OFFICE OF TREATY SETTLEMENTS
DEPT OF THE MINISTRY OF JUSTICE

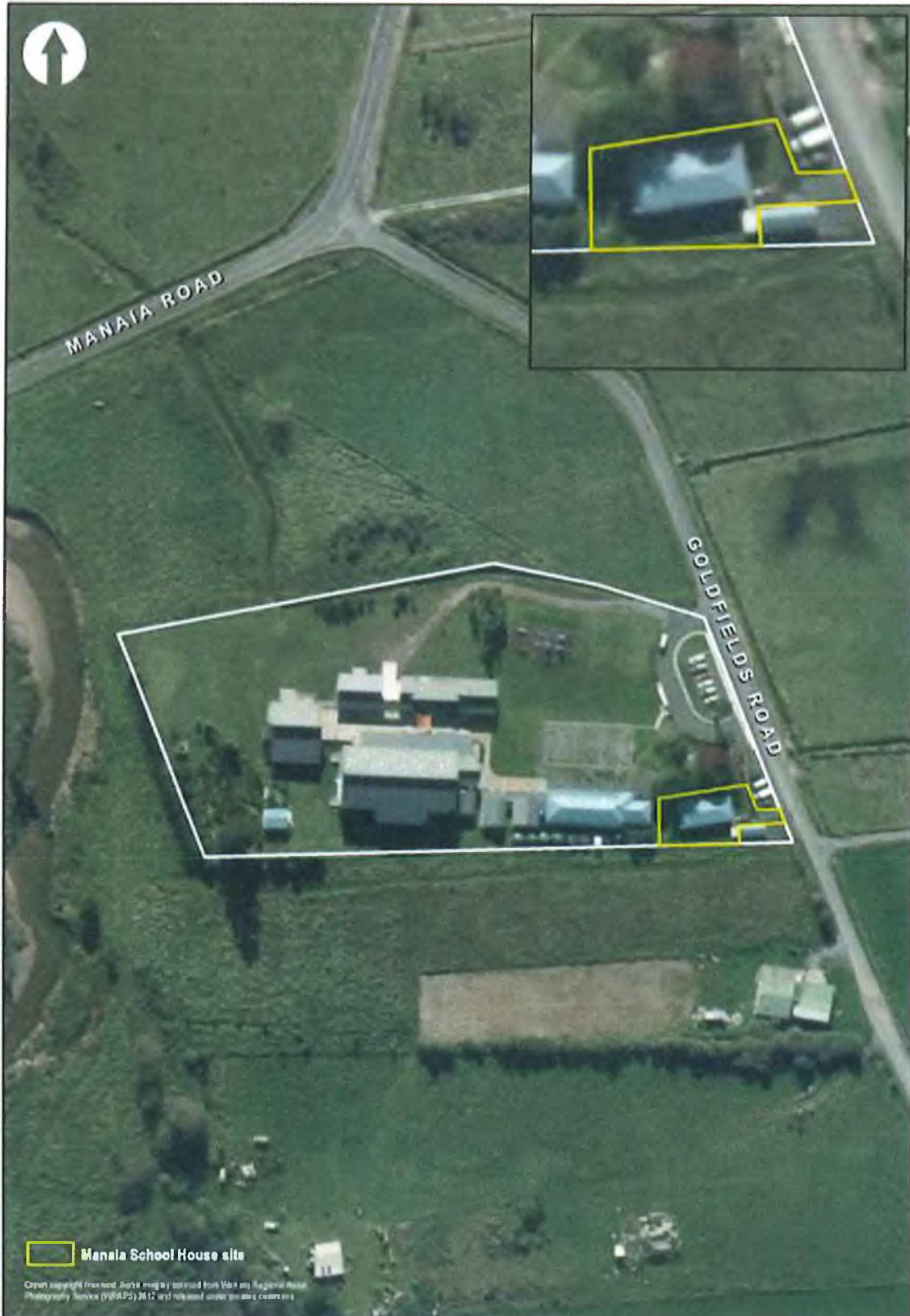
Repanga (Cuvier) Island Nature Reserve

Areas referred to in the deed of settlement between
Ngāti Maru and the Crown

Approved as to boundaries:
.....
for Ngāti Maru
.....
for and on behalf of the Crown

ATTACHMENTS

3 TE WHAREKURA O MANAIA HOUSE SITE DIAGRAM



Handwritten initials or signature.

ATTACHMENTS

4 AOTEA RFR LAND

Property name	Description (all North Auckland Land District, Auckland Council)	Land holding Agency
Harataonga Scenic Reserve	264.4292 hectares, more or less, being Allotments 27, 28, 29, and 30 Parish of Harataonga. All <i>Gazette</i> 1941, p 595.	Department of Conservation
Komahunga conservation area (part Aotea Conservation Park)	7.6760 hectares, more or less, being Section 24 SO 477347. Part <i>Gazette</i> 2015-In2067.	Department of Conservation
Medlands Wildlife Management Reserve	4.1520 hectares, more or less, being Lot 1 DP 73752. All computer freehold register NA29C/1438. 5.6322 hectares, more or less, being Part Lot 2 DP 73752. Balance computer freehold register NA29C/1439.	Department of Conservation
Okupu conservation area (part Aotea Conservation Park)	14.6016 hectares, more or less, being Allotment SE127 Parish of Aotea. Part <i>Gazette</i> 2015-In2067.	Department of Conservation
Oruawharo Creek Recreation Reserve	0.4935 hectares, more or less, being Lots 1, 2, 6 and 7 DP 61572. Part <i>Gazette</i> notice 163078.1. 0.1141 hectares, more or less, being Lot 8 DP 61572. All computer freehold register NA17B/770.	Department of Conservation
Oruawharo Creek Government Purpose Reserve	1.3680 hectares, more or less, being Lot 1 DP 98569. All computer freehold register NA53C/1315. 3.6779 hectares, more or less, being Lot 1 DP 108696. All computer freehold register	Department of Conservation

ATTACHMENTS

4: AOTEA RFR LAND

	NA61B/242. 1.1170 hectares, more or less, being Lot 2 DP 98569. All computer freehold register NA53C/1316.	
Oruawharo Marginal Strip	25.0 hectares, approximately, being Crown Land adjoining Allotments SE144, 144B, 70 and NW69 Parish of Aotea. 2 hectares, approximately, being Crown Land adjoining Allotments 65 and SE69 Parish of Aotea.	Department of Conservation
Pa Point Recreation Reserve	2.6450 hectares, more or less, being Allotment 253 Parish of Aotea. All <i>Gazette</i> notice 555032.1.	Department of Conservation
Rosalie Bay Marginal Strip	2.0 hectares, approximately, being Crown Land adjoining Allotments 52 and NE45 Parish of Aotea.	Department of Conservation
Ruahine North conservation area (part Aotea Conservation Park)	58.0 hectares, approximately, being Allotments 52, E51, M51 and NE45 Parish of Aotea. Part <i>Gazette</i> 2015-In2067.	Department of Conservation
Ruahine South conservation area (part Aotea Conservation Park)	26.2 hectares, approximately, being Allotment SW44 Parish of Aotea. Part <i>Gazette</i> 2015-In2067.	Department of Conservation
Sandy Bay Marginal Strip	0.8 hectare, approximately, being Crown Land adjoining Allotment E35 Parish of Aotea.	Department of Conservation
Shoal Bay conservation area (part Aotea Conservation Park)	0.2093 hectares, more or less, being Stopped Road SO 28649 and Section 23 SO 477347. Part <i>Gazettes</i> 1940, page 3136 and 2015-In2067.	Department of Conservation
Te Atamira Scenic Reserve	0.8093 hectares, more or less, being Allotment 34A Parish of Aotea. All <i>Gazette</i> 1991 page 2667.	Department of Conservation

ATTACHMENTS

4: AOTEA RFR LAND

<p>Tryphena Scenic Reserve</p>	<p>190.8447 hectares, more or less, being Allotments 95, NW100, and SE125 Parish of Aotea. All <i>Gazette</i> 1981 page 1628.</p> <p>16.1874 hectares, more or less, being Allotment M100 Parish of Aotea. All computer freehold register NA533/181 (limited as to parcels).</p> <p>24.5568 hectares, more or less, being Allotment SE100 Parish of Aotea. All Proclamation 14192.</p> <p>89.2989 hectares, more or less, being Allotments NW101, NW102, M102, SE102, and NW103 Parish of Aotea. Part <i>Gazette</i> 1950 page 238.</p> <p>24.2811 hectares, more or less, being Allotment M101 Parish of Aotea. Part Proclamation 13302.</p> <p>16.4960 hectares, more or less, being Allotment SE101 Parish of Aotea. All Proclamation 12992.</p> <p>66.3912 hectares, more or less, being Allotments 226 and 227 Parish of Aotea. Part <i>Gazette</i> 1949 page 1591.</p>	<p>Department of Conservation</p>
<p>Wairahi forest sanctuary (part Aotea Conservation Park)</p>	<p>477.1600 hectares, more or less, being Section 19 SO 477346. Part <i>Gazette</i> 2015-In2067.</p>	<p>Department of Conservation</p>

7/16

ATTACHMENTS

AOTEA RFR LAND MAP

[Map to be inserted]

Handwritten initials or marks.

ATTACHMENTS

5 DRAFT SETTLEMENT BILL

P *LB*