

ed. A

**NGĀTI HEI**

**and**

**THE TRUSTEES OF THE HEI O WHAREKAHO SETTLEMENT TRUST**

**and**

**THE CROWN**

---

**DEED OF SETTLEMENT SCHEDULE:**

**ATTACHMENTS**

---

ATTACHMENTS

---

84 ✓

TABLE OF CONTENTS

1 AREA OF INTEREST ..... 1

2 DEED PLANS ..... 2

3 DRAFT SETTLEMENT BILL ..... 42

88 ✓

ATTACHMENTS

1 AREA OF INTEREST



Handwritten initials and a checkmark in blue ink.

**ATTACHMENTS**

---

**2 DEED PLANS**

B.A. ✓

## ATTACHMENTS

### 2: DEED PLANS

#### Cultural redress properties

- Opou (OTS-100-01)
- Rangihau (OTS-100-02)
- Kohuamuri (OTS-100-03)
- Kaitoke/Pukekaroro (OTS-100-04)
- Pukeumu (OTS-100-05)
- Opuā (OTS-100-06)
- Matarangi Pā (OTS-100-07)
- Te Pare Pā (OTS-100-08)
- Hereheretaura Pā (OTS-100-09)
- Puke Pakira (OTS-100-10)
- Whitianga Pā (OTS-100-11)
- Opera Point property (OTS-100-12)
- Purangi (OTS-100-14)
- Te Rerepiki (OTS-100-15)
- Pauanui Tihi (OTS-100-16)
- Paparoa sites A and B (OTS-100-17)
- Te Puia (OTS-100-18)
- Tapu Point property (OTS-100-19)

#### Ohinau Island (OTS-100-20)

#### Overlay areas

- Cathedral Cove Recreation Reserve (OTS-100-22)
- Repanga (Cuvier) Island Nature Reserve (OTS-100-23)

#### Statutory areas

- Coastal and Maritime area (OTS-100-24)
- Hikuai River Area (OTS-100-25)
- Kapowai River Area (OTS-100-26)
- Otama Beach (including Otama Sand Dunes Recreation Reserve, and Otama Beach Recreation Reserve) (OTS-100-27)
- Punaruku Scenic Reserve (OTS-100-28)
- Rivers, streams and their tributaries within the Tairua Harbour catchment area (OTS-100-29)
- Te Karaka (OTS-100-30)
- Tapuaetahi (including Tapuaetahi Scenic Reserve) (OTS-100-31)
- Rivers, streams and their tributaries within the Wharekawa Harbour catchment area (OTS-100-32)
- Whangapoua Forest Conservation Area (OTS-100-33)
- Rivers, streams and their tributaries within the Whangapoua Harbour catchment area (OTS-100-34)
- Rivers, streams and their tributaries within the Whitianga Harbour catchment area (OTS-100-35)
- Kuaotunu Recreation Reserve (OTS-100-37)

Handwritten initials and a signature in blue ink.

**ATTACHMENTS**

---

**2: DEED PLANS**

**Opuia Marginal Strip (OTS-100-36)**

**Vest and vest back sites**

- Te Karaka (OTS-100-21)
- Repanga (Cuvier) Island Nature Reserve (OTS-100-38)

Handwritten initials and a large 'X' mark in the top right corner.

ATTACHMENTS

2: DEED PLANS

OPOU (OTS-100-01)



8.1 A

ATTACHMENTS

2: DEED PLANS

RANGIHAU (OTS-100-02)





8.2 ✓

ATTACHMENTS

2: DEED PLANS

KOHUAMURI (OTS-100-03)



8.1 N

ATTACHMENTS

2: DEED PLANS

KAITOKE/PUKEKARORO (OTS-100-04)



80 A

ATTACHMENTS

2: DEED PLANS

PUKEUMU (OTS-100-05)



Handwritten initials: B.D. M

ATTACHMENTS

2: DEED PLANS

OPUA (OTS-100-06)

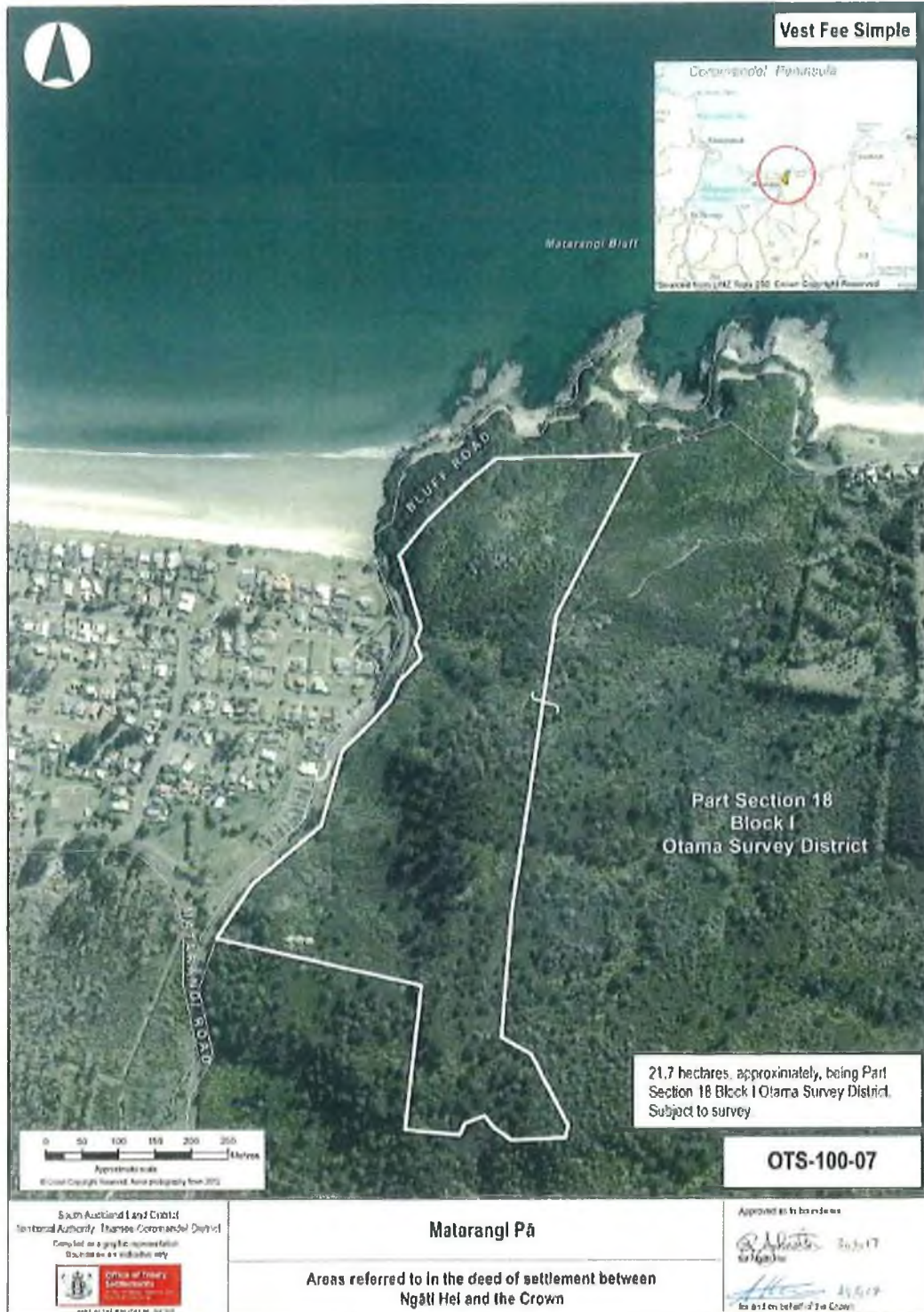


BD A

ATTACHMENTS

2: DEED PLANS

MATARANGI PĀ (OTS-100-07)



Handwritten initials and a checkmark in the top right corner.

ATTACHMENTS

2: DEED PLANS

TE PARE PĀ (OTS-100-08)



Handwritten initials and a large 'A' mark in blue ink.

ATTACHMENTS

2: DEED PLANS

HEREHERETAURA PĀ (OTS-100-09)



ATTACHMENTS

2: DEED PLANS

PUKE PAKIRA (OTS-100-10)





8.8. A

ATTACHMENTS

2: DEED PLANS

WHITIANGA PĀ (OTS-100-11)



88 ✓

ATTACHMENTS

2: DEED PLANS

OPERA POINT PROPERTY (OTS-100-12)



8.1. ✓

ATTACHMENTS

2: DEED PLANS

PURANGI (OTS-100-14)



ATTACHMENTS

2: DEED PLANS

88 ✓

TE REREPIKI (OTS-100-15)



B.A. ✓

ATTACHMENTS

2: DEED PLANS

PAUANUI TIHI (OTS-100-16)



*B.S. K*

ATTACHMENTS

2: DEED PLANS

TE PUIA (OTS-100-18)



8.8 A

ATTACHMENTS

2: DEED PLANS

TAPU POINT PROPERTY (OTS-100-19)



B.D. A

ATTACHMENTS

2: DEED PLANS

OHINAU ISLAND (OTS-100-20)



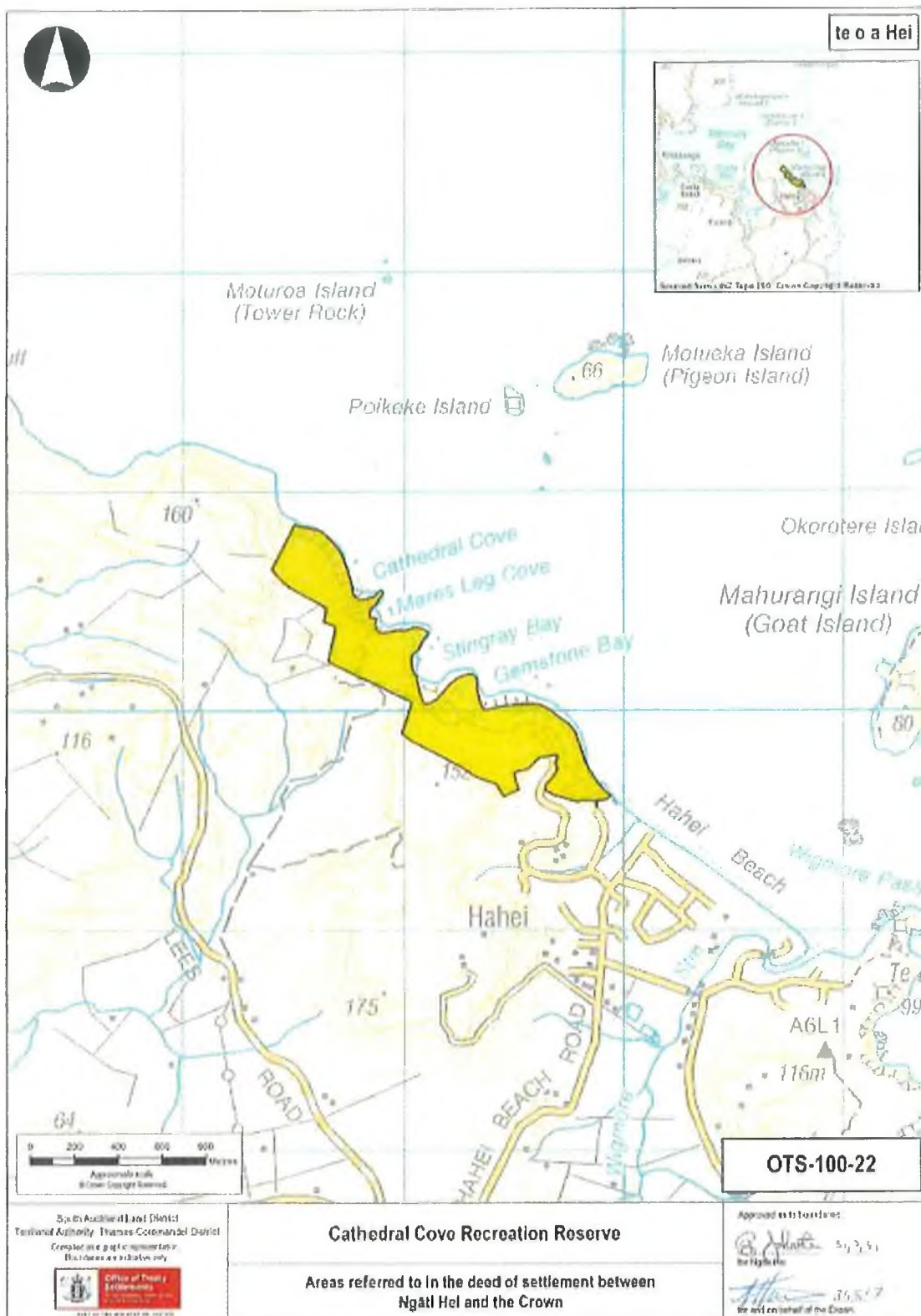


B.D. A

ATTACHMENTS

2: DEED PLANS

CATHEDRAL COVE RECREATION RESERVE (OTS-100-22)



B. J. A

ATTACHMENTS

2: DEED PLANS

REPANGA (CUVIER) ISLAND NATURE RESERVE (OTS-100-23)



30. N

ATTACHMENTS

2: DEED PLANS

COASTAL AND MARITIME AREA (OTS-100-24)

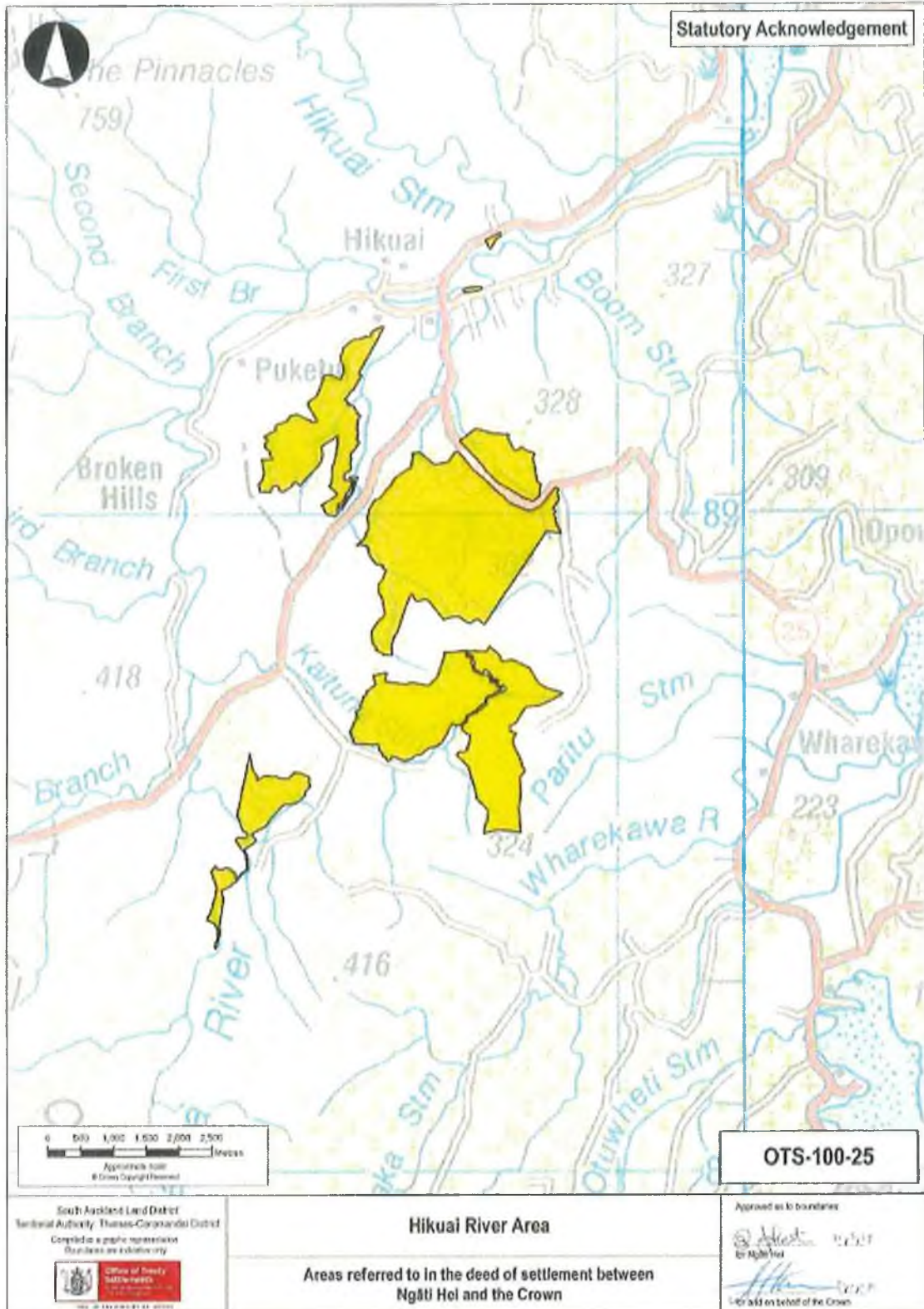


8.8. 1

ATTACHMENTS

2: DEED PLANS

HIKUAU RIVER AREA (OTS-100-25)

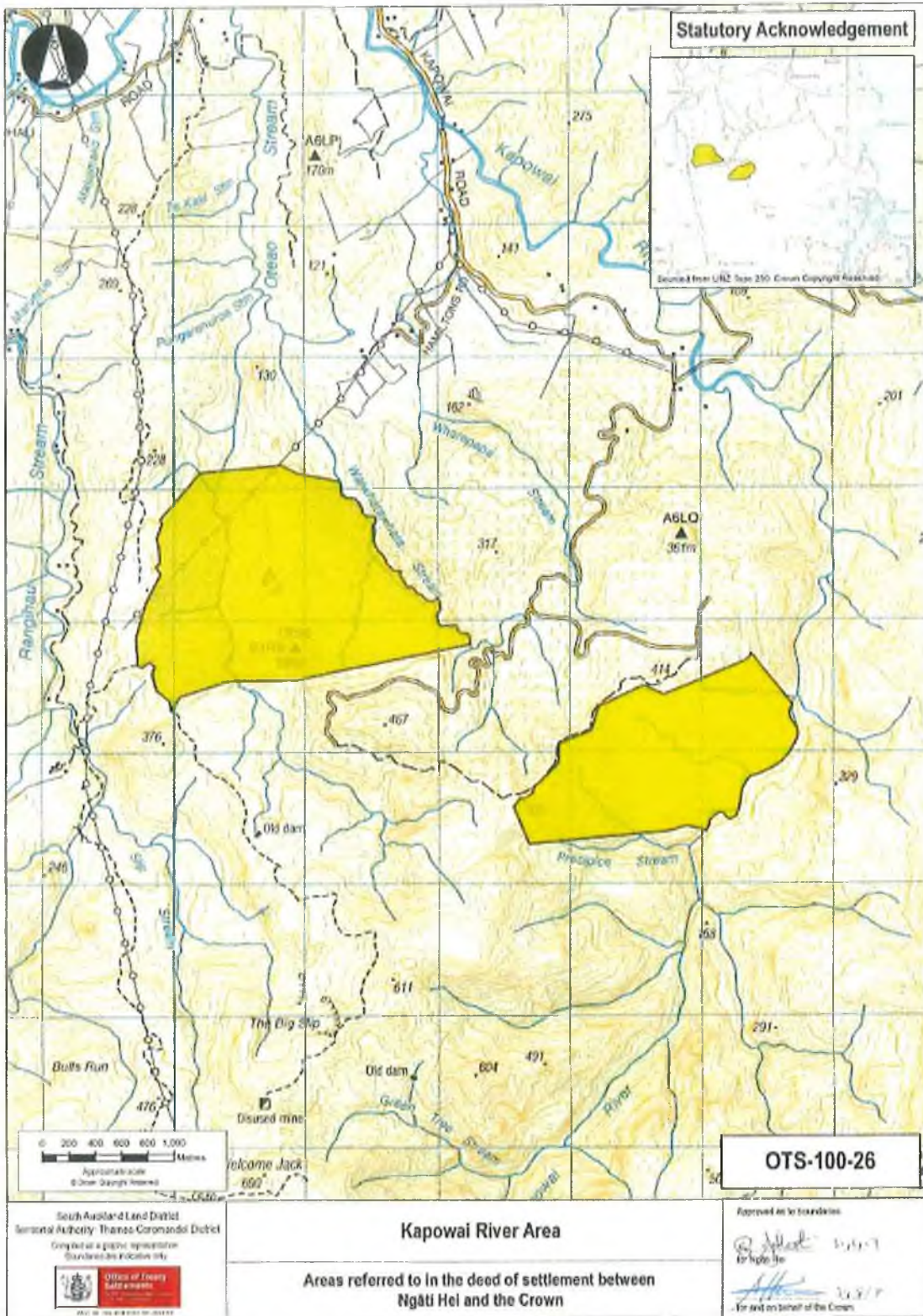


8.8 N

ATTACHMENTS

2: DEED PLANS

KAPOWAI RIVER AREA (OTS-100-26)

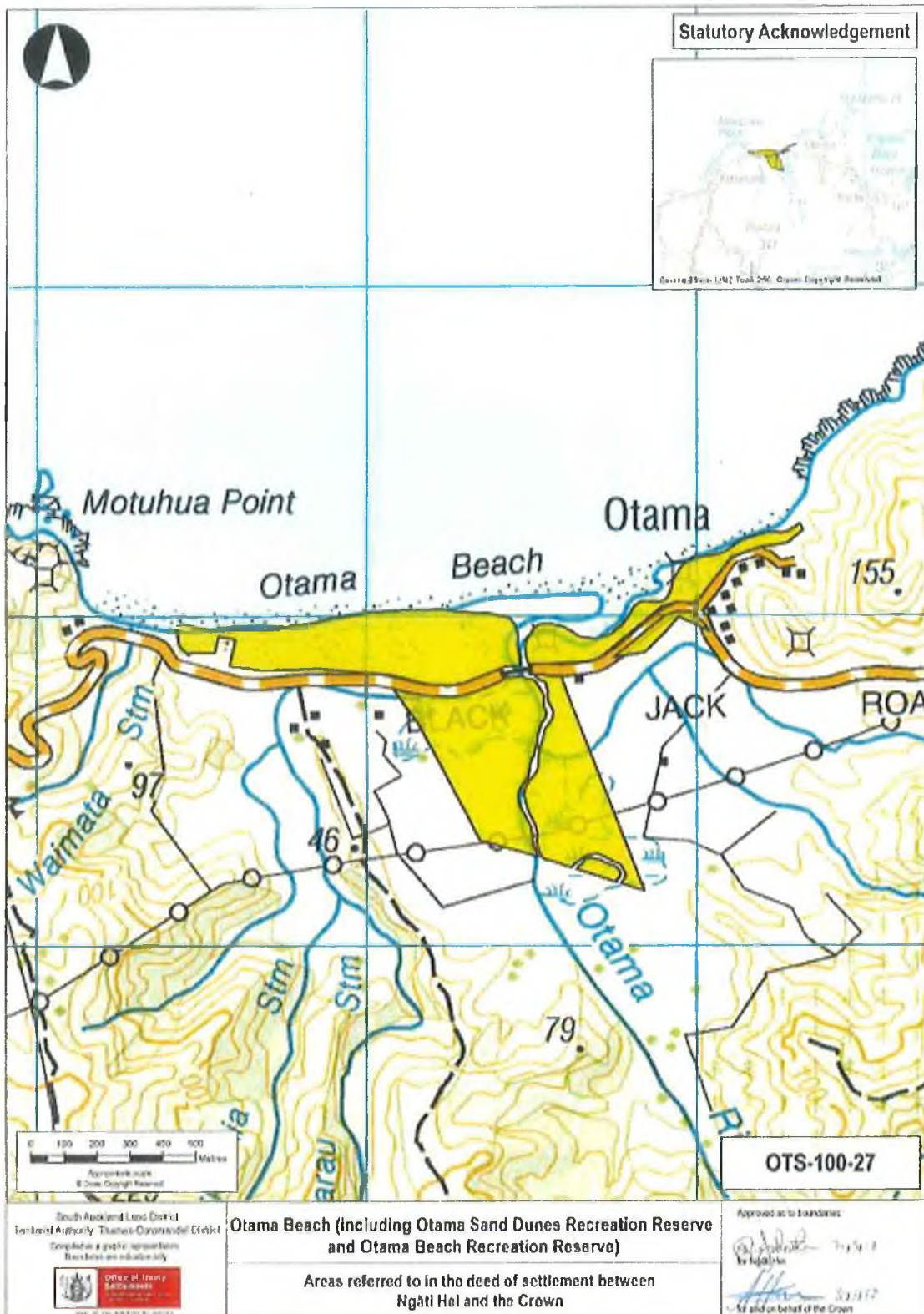


Handwritten initials and a checkmark in the top right corner.

ATTACHMENTS

2: DEED PLANS

OTAMA BEACH (INCLUDING OTAMA SAND DUNES RECREATION RESERVE, AND OTAMA BEACH RECREATION RESERVE) (OTS-100-27)



South Auckland Land District  
Tairāwhiti-Whanganui-Ōtago District  
Completed as a public representation  
Does not constitute an offer or warranty



**Otama Beach (including Otama Sand Dunes Recreation Reserve and Otama Beach Recreation Reserve)**

Areas referred to in the deed of settlement between  
Ngāti Hei and the Crown

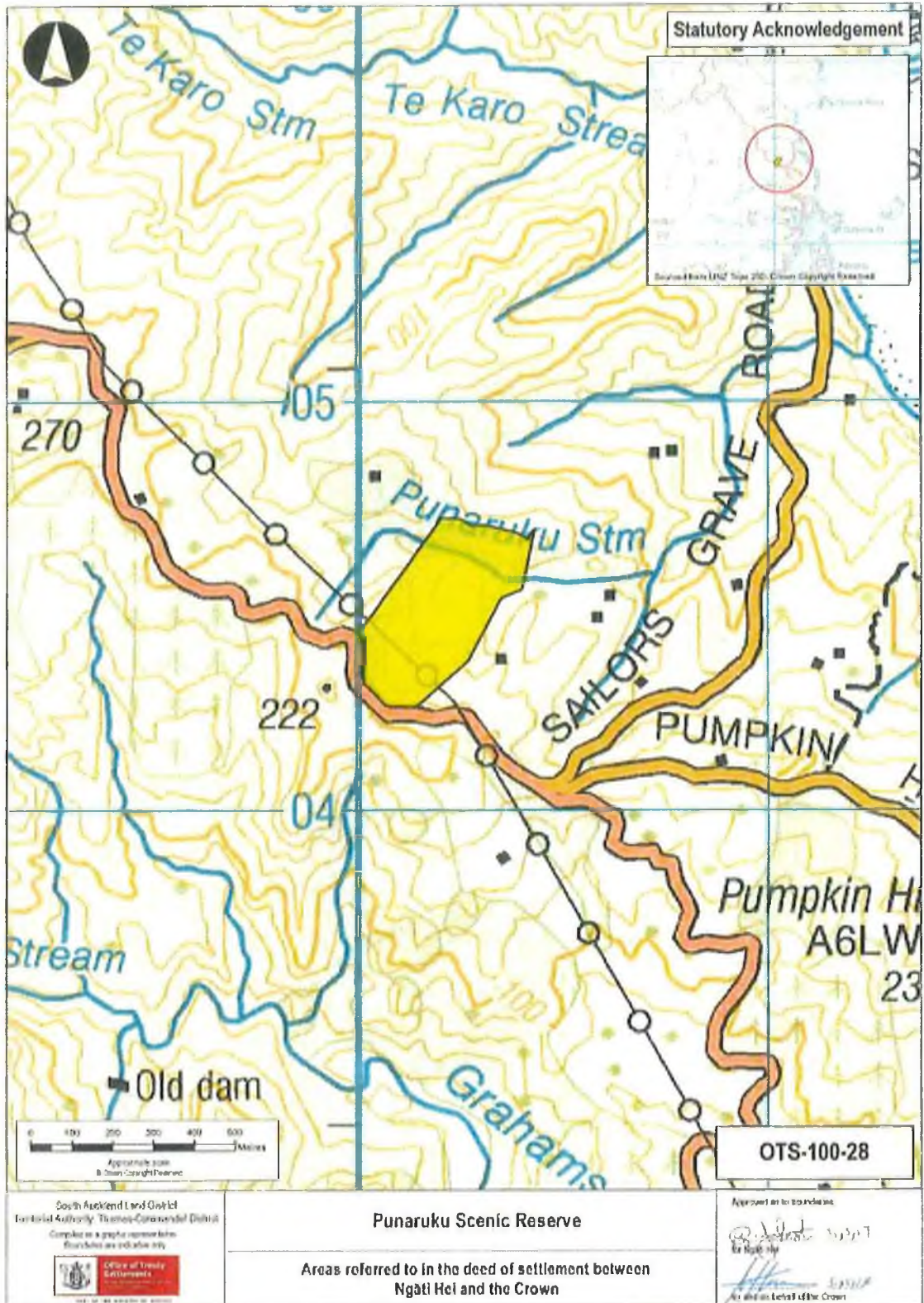
Approved as to boundaries  
by [Signature] 7/1/17  
[Signature] 5/3/17  
Valid on behalf of the Crown

8.8.18

ATTACHMENTS

2: DEED PLANS

PUNARUKU SCENIC RESERVE (OTS-100-28)



B.D. ✓

ATTACHMENTS

2: DEED PLANS

RIVERS, STREAMS AND THEIR TRIBUTARIES WITHIN THE TAIRUA HARBOUR CATCHMENT AREA (OTS-100-29)



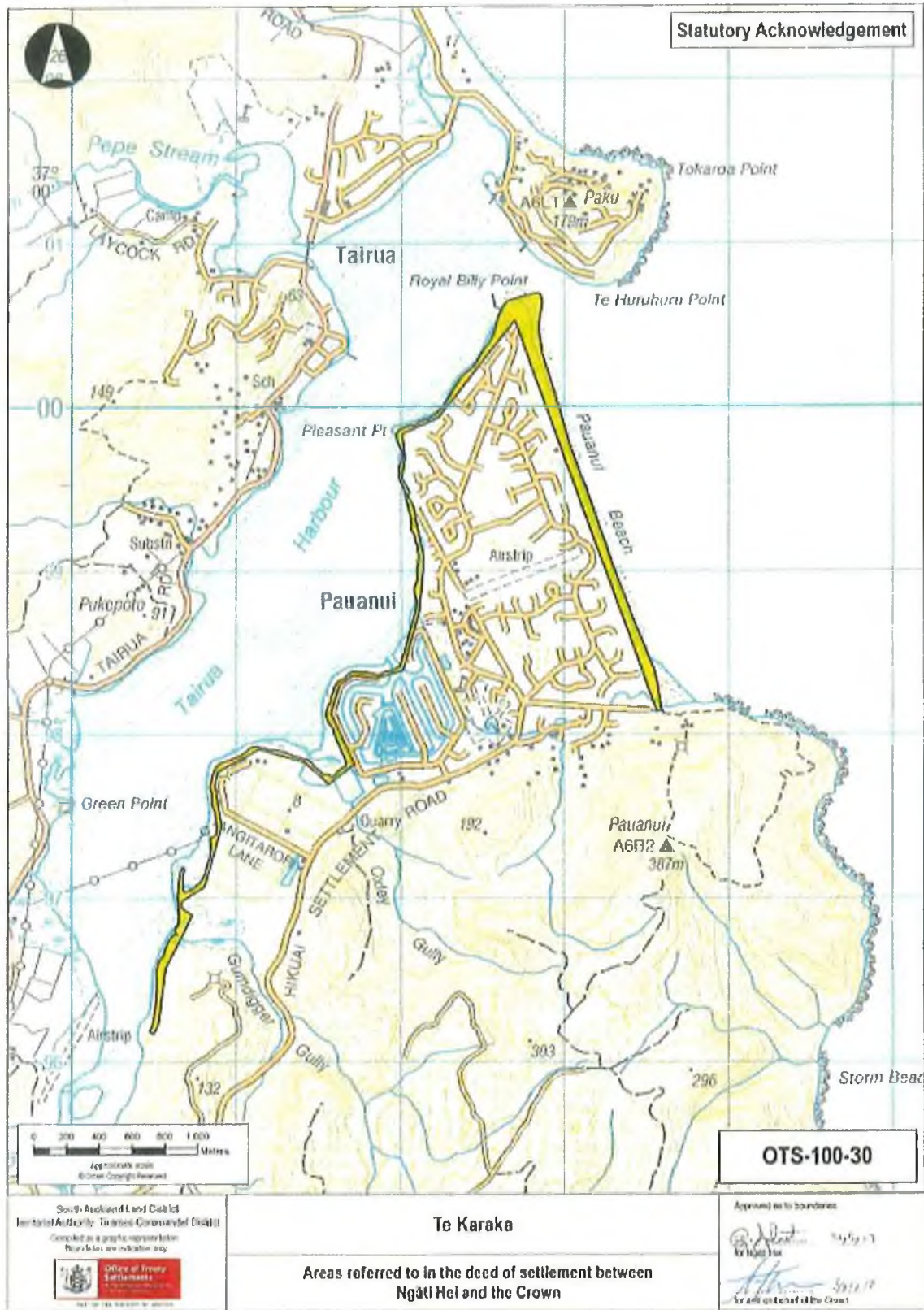


B.S.A

ATTACHMENTS

2: DEED PLANS

TE KARAKA (OTS-100-30)



Southern Auckland Land District  
Imperial Authority: James Cousens & Co Ltd  
Compiled as a graphic representation  
This is a plan and not a map



**Te Karaka**  
Areas referred to in the deed of settlement between  
Ngāti Hei and the Crown

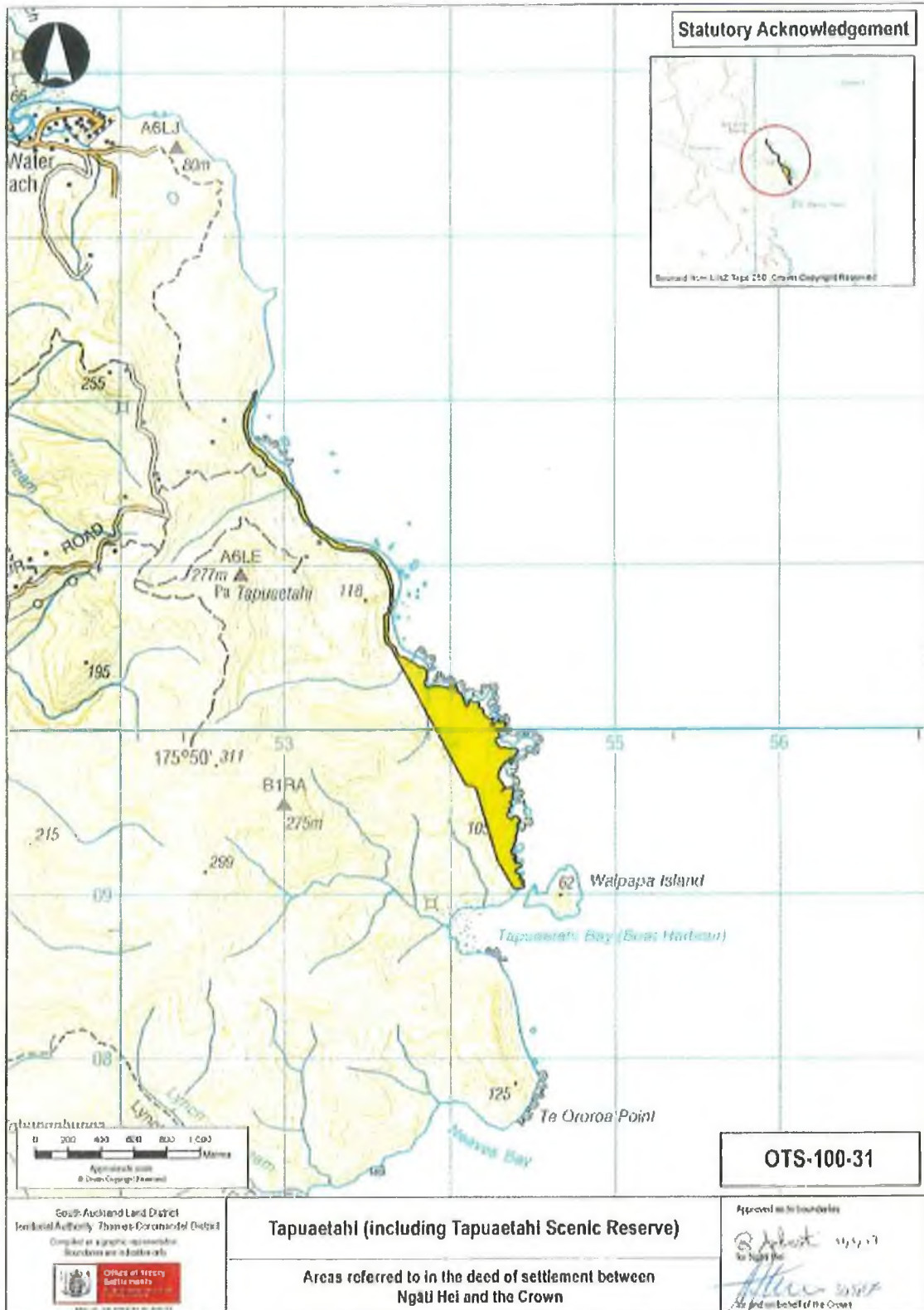
Approved as to boundaries  
[Signature] 2019-11  
[Signature] 2019-11  
for and on behalf of the Crown

S.D. ✓

ATTACHMENTS

2: DEED PLANS

TAPUAETAHI (INCLUDING TAPUAETAHI SCENIC RESERVE) (OTS-100-31)



82

ATTACHMENTS

2: DEED PLANS

RIVERS, STREAMS AND THEIR TRIBUTARIES WITHIN THE WHAREKAWA HARBOUR CATCHMENT AREA (OTS-100-32)

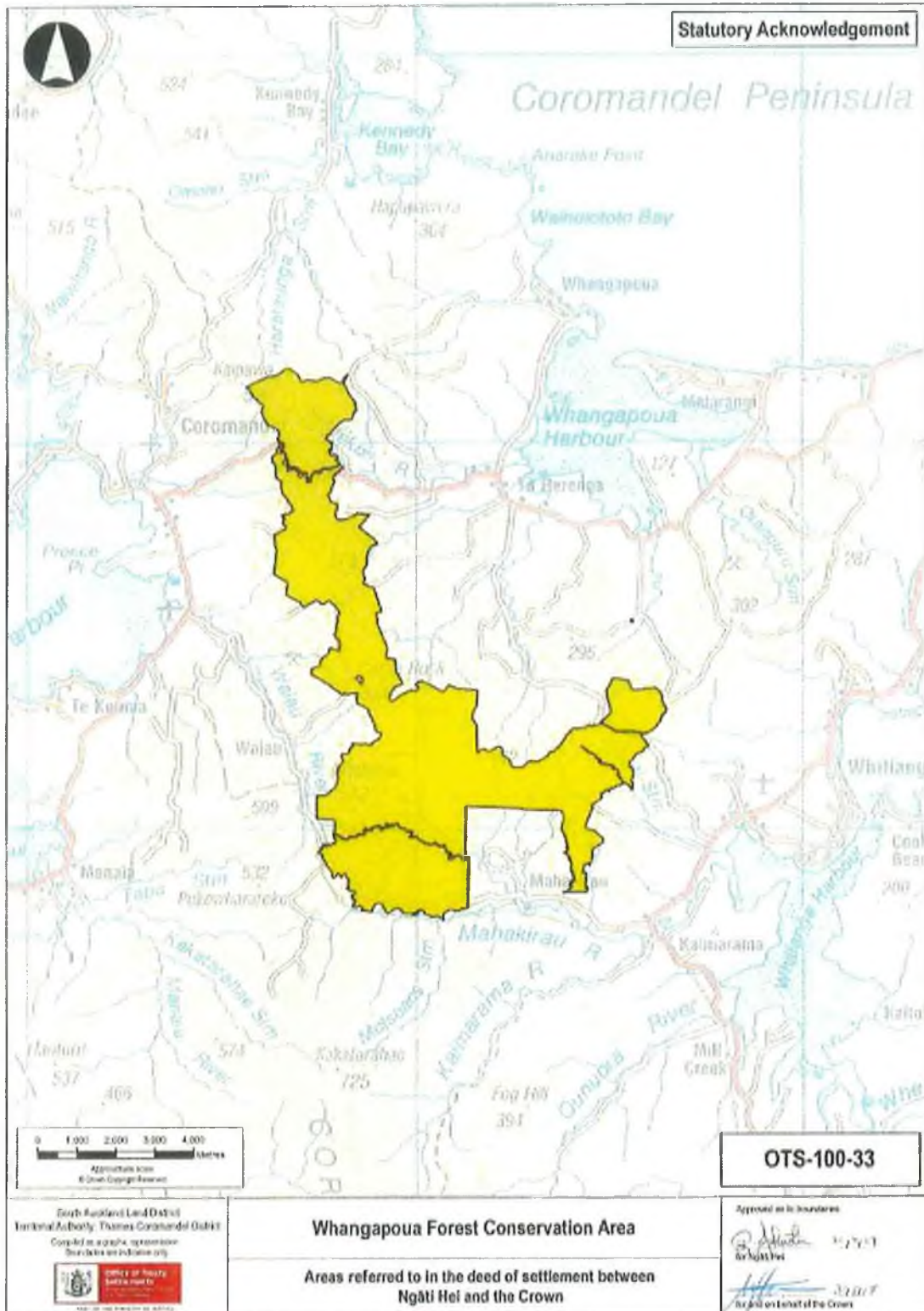


88- A

ATTACHMENTS

2: DEED PLANS

WHANGAPOUA FOREST CONSERVATION AREA (OTS-100-33)



Handwritten initials and a mark resembling a stylized 'K' or 'A'.

ATTACHMENTS

2: DEED PLANS

RIVERS, STREAMS AND THEIR TRIBUTARIES WITHIN THE WHANGAPOUA HARBOUR CATCHMENT AREA (OTS-100-34)



South Auckland Land District  
Regional Authority Thames Coromandel District  
Copied as a public document  
Source as indicated  
Office of Treaty Settlements  
Part of the Whangapoua Harbour

Rivers, Streams and their tributaries within the Whangapoua Harbour catchment area  
Areas referred to in the deed of settlement between Ngāi Hei and the Crown

Approved as to boundaries  
by Ngāi Hei  
for and on behalf of the Crown

B.A. N

ATTACHMENTS

2: DEED PLANS

RIVERS, STREAMS AND THEIR TRIBUTARIES WITHIN THE WHITIANGA HARBOUR CATCHMENT AREA (OTS-100-35)

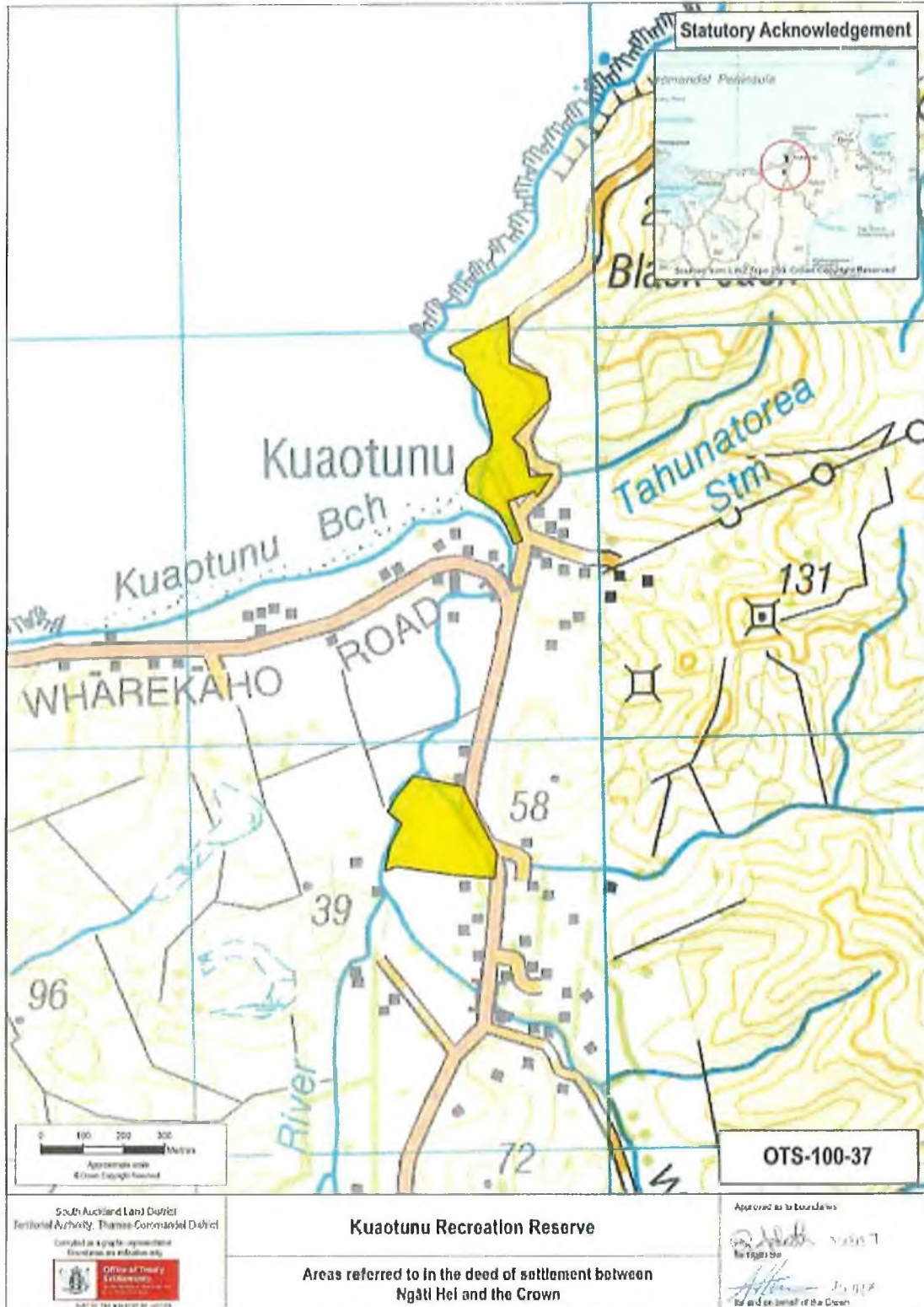


S.D. A

ATTACHMENTS

2: DEED PLANS

KUAOTUNU RECREATION RESERVE (OTS-100-37)



Handwritten initials and a checkmark.

ATTACHMENTS

2: DEED PLANS

OPUA MARGINAL STRIP (OTS-100-36)



South Auckland Land Debt's  
 Technical Authority Thomas Coromandel District  
 Issued as a public registration  
 This is not for sale or use only

Office of Treaty  
 Settlements  
 Te Kaitiaki Take Kōwhiri  
 2017

**Opu Marginal Strip**

Areas referred to in the deed of settlement between  
 Ngāi Hei and the Crown

**OTS-100-36**

Approved as to boundaries

*[Signature]* 3/25/17  
*[Signature]* 3/25/17  
 for and on behalf of the Crown

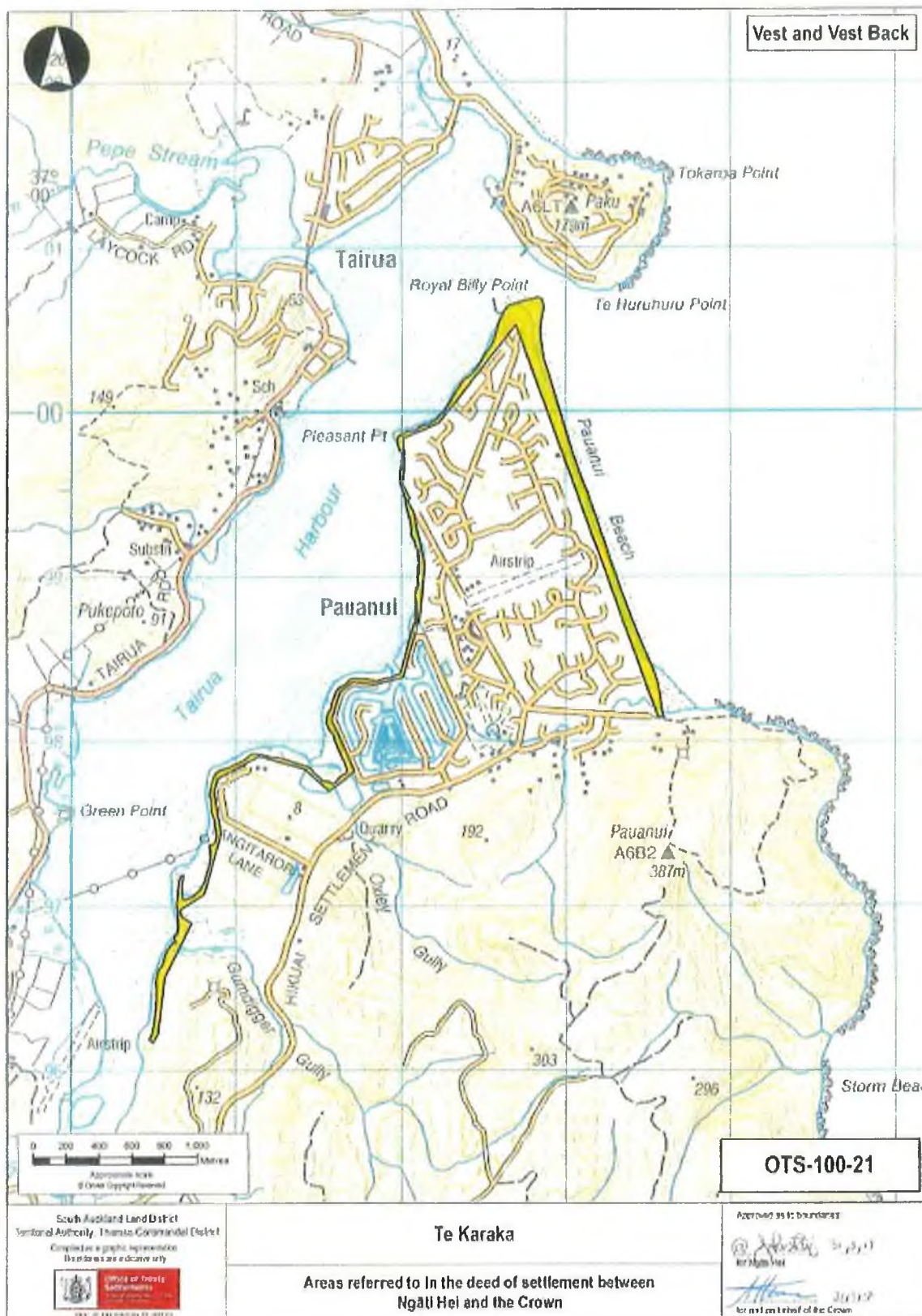


Handwritten initials: B.A. A

ATTACHMENTS

2: DEED PLANS

TE KARAKA (OTS-100-21)



8.8  
A

ATTACHMENTS

2: DEED PLANS

REPANGA (CUVIER) ISLAND NATURE RESERVE (OTS-100-38)



Handwritten initials and a checkmark in blue ink.

**3 DRAFT SETTLEMENT BILL**