
COVID-19 Ngāti Tamaterā

15 October 2021



“He aha te mea nui o te ao”
He tangata he tangata he tangata
*What is the greatest thing in the world
It is people, people, people*

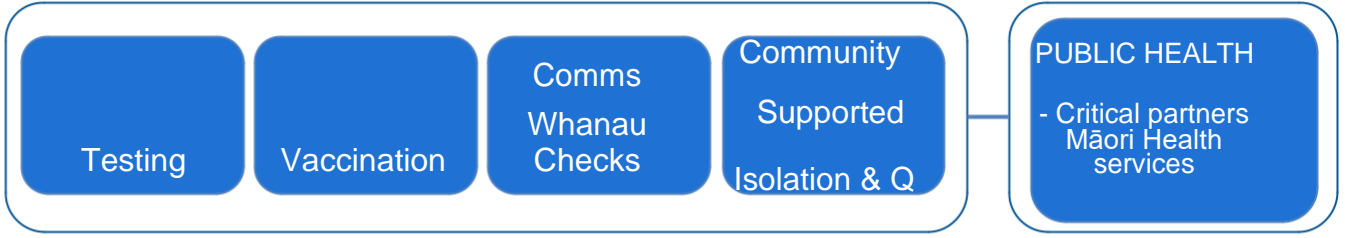
NTTST COVID-19 Response

- Equity
- Quality & Safety
- Planning & Intelligence
- Comms & Engagement
- Information Systems
- Supply & Distribution



BAU

Resurgence

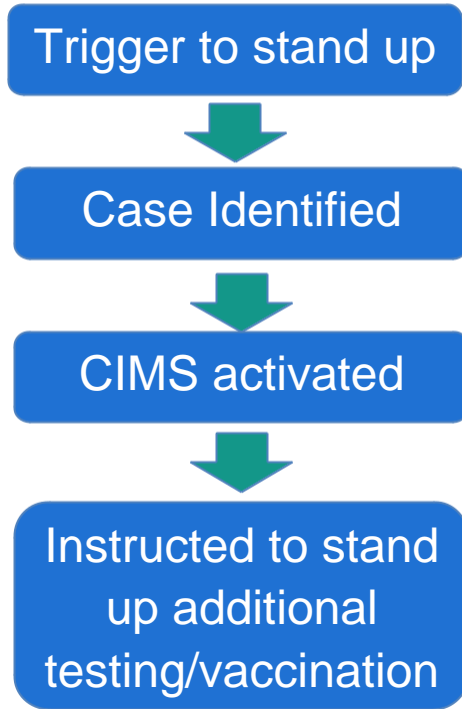


CIMS – Critical Incident Management

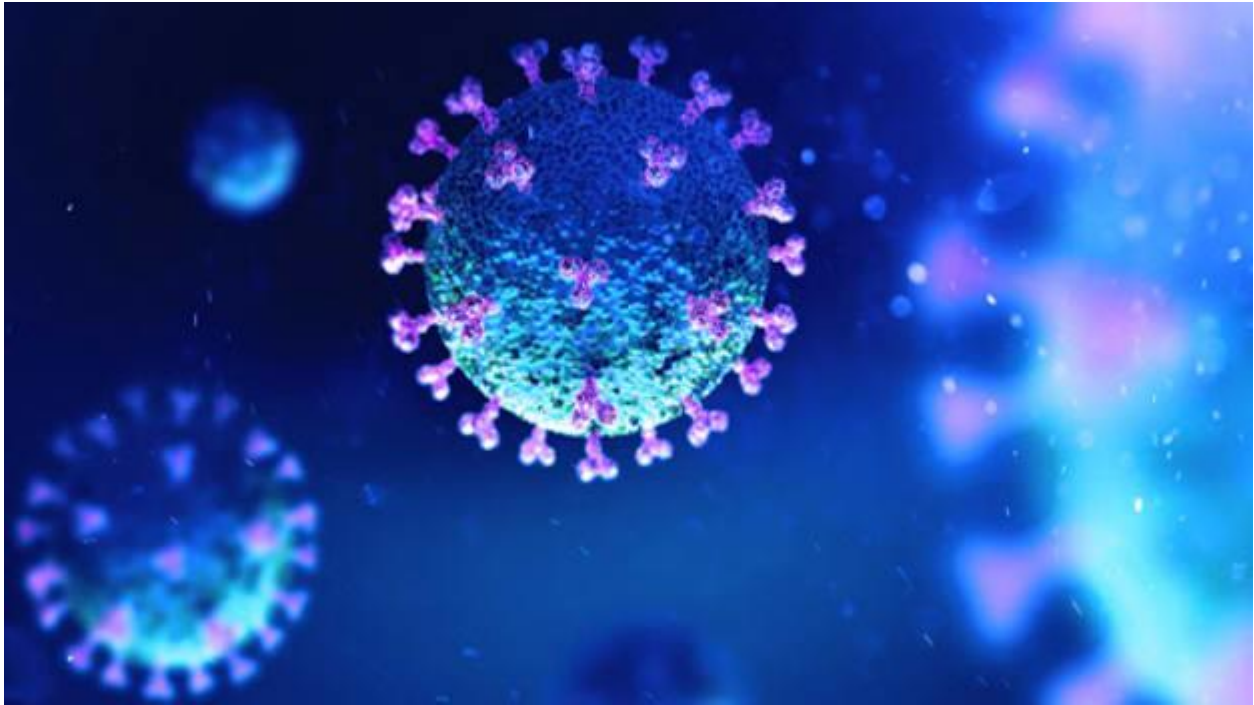
Respond to Regional & Local needs

Enable Local Iwi Response

Responding to an outbreak



- Lessons learnt from previous events
- Processes refined & agreed
- Teams ready & prepared
- Set up testing site in 4 - 12 hours depending on location
- Crates of supplies & equipment ready to deploy from distribution
- Mobile Van stocked & ready to go
- Experienced testing staff and whanau leads identified
- Multiple providers supportive & ready to go
- Māori Wardens, support traffic management
- Community Testing Site (CTC) - expands testing & vaccination availability





Iwi Supported Isolation and Quarantine

- To help manage community isolation by providing the support needed to successfully complete isolation
- For those people that cannot effectively self isolate, require additional support and MIF/Q is not a suitable option.
- Support provided may be accommodation within the community, food, wrap around services like medication, nappies, petcare, transport, devices etc
- Progress: Identifying possible accommodation solutions, leasing a van for safe transport of possibly infected cases, initial identification of current suppliers with gaps in locations identified
- Next Steps: Whakawhanaungatanga with local providers and engaging services

Resurgence Planning Approach

Identify Triggers

- Activation triggers identified
- Response levels – by complexity
- Case scenarios provide guidance

Who – What-Where

- Whole-of-System approach
- Priority populations have an equity analysis over related planning and operational activity
- Cyclical - Keep it out / Prepare for it / Stamp it out / Manage the impact
- Service contributions detailed by setting

Align to CIMS Functions

- Service Roles & Responsibilities / Key Controls / Control documents
- Consistent format enables information sharing
- CIMS functions informed by service resurgence plans

COVID-19 Resurgence Plan

Aim
An accountability framework for the resurgent management of COVID-19 in the Tamaki, Waikato/Hauraki - Supported by Equity and Clinical Governance

Primary Drivers

KEEP IT OUT

PREPARE FOR IT

STAMP IT OUT

MANAGE THE IMPACT

Settings

Border settings, Managed Isolation & Quarantine

Detection & Surveillance Testing & Supply

Contact Tracing, Case Mgt & Public Health Measures

Vaccines; Critical Care Resources; Welfare & Well-being; Workforce

Key Elements

Accountability Framework

Resurgence plans by service / sector – using common template for high level summaries

Key Roles and Responsibilities identified

Critical Controls identified

Control Documents identified and shared

Content enables and informs EOC operations

CIMS Functions

Planning

Intelligence

Logistics & Supply

Operations

Welfare & Recovery

Public & Staff Information

Risk & Assurance

EQUITY UNDERPINS ALL ACTIVITY

A Working Group to Finalise the Resurgence Planning Document

Expected Deliverable

A Resurgence Planning framework for Ngati Tamatera is completed and available across the whanau, hapu, iwi and Maori health provider partners. It clearly sets out the guidance in how service resurgence planning accountabilities, roles and responsibilities, steps and processes that will enable Ngati Tamatera to effectively address COVID- 19 resurgence for its population, with a focus on recovery and equity outcomes for Māori and Pacific Peoples.

Planning Principles

Working
with Māori in
ways that
Māori would

The four
pillars of the
elimination
are woven through
the RP

An equity
analysis is
applied to
planning &
operations

Clinical
Response led
By clinical
MHP

Recovery
& well
being is
addressed



WHAKAMANA NGĀ WHĀNAU

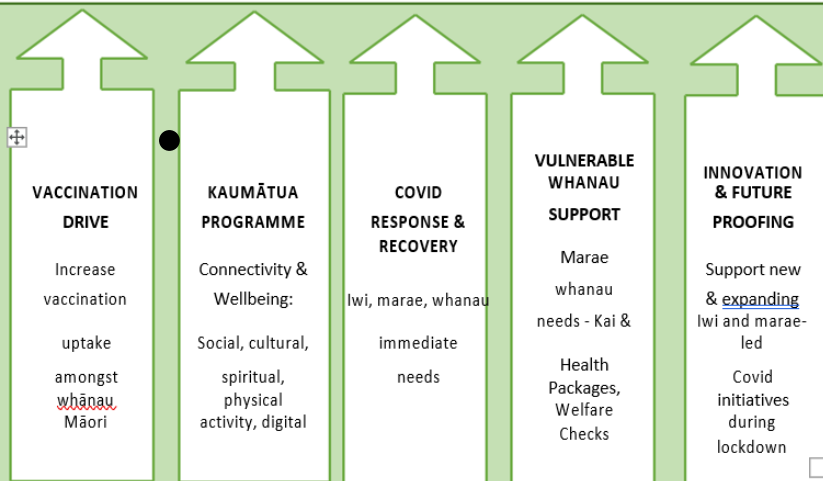
Iwi Ora, Marae Ora, Whānau Ora
Healthy, thriving whānau connected to their marae and iwi

Ngāti
Tamaterā -
Tumutumu

Partners

Auckland
Council
TKHoH
MSD
Te Puni Kōkiri
Te Arawhiti
HMTB
Iwi

WHAKAMANA NGĀ IWI



Iwi based
Coordinator
Shared
delivery
model

Kōmiti
Whakahaere
Joint Iwi
Approach

Hauraki and
Tāmaki
regions

WHAKAMANA NGĀ MARAE

IWI-BASED COORDINATOR: Select initiative/s & liaise with whānau Kaimahi

MARAE/WHANAU LEADS: Determine needs & nominate
Coordinator

Current areas of focus



Free
Buses
Shotbro

- Working on vaccination drive for Iwi Māori
 - Pivot to mobile and needs approach
 - Kaupapa Māori and Pacific Providers engaged to provide vaccinations and support whānau to service
 - Data providing areas of unvaccinated populations to deploy mobiles
 - Fixed sites, general practice and pharmacies continuing to vaccinate
 - Sharing skills and knowledge
 - Outbound calling campaign to support mobiles by Whakarongorau and local dedicated iwi Māori welfare check and call team
- Ongoing engagement with Mental Health, Disability and Ethnic groups to support access to vaccinations
 - Referral process available for in-home vaccination
 - External audit of sites for accessibility completed.
 - Planning for specific needs and groups; i.e low sensory sessions, sign language interpreter sessions, pop-ups for homeless and transient populations, meeting specific cultural needs
- Portfolio approach to utilise resources
- Ongoing close and critical relationships with marae across region **Te Kotahi a Tāmaki**
-

The next 12 weeks

EVERY DOSE MATTERS

“Amohia ake te ora o te iwi, ka puta ki te wheiao.” “To protect the wellbeing of our people is paramount”

Kiingi Tuheitia Pootatau Te Wherowhero Te Tuawhitu